

Panasonic ideas for life

A PHONE FOR EVERYONE IT'S YOUR CALL

PANASONIC DECT PHONES, ANSWERING SYSTEMS
AND LIFESTYLE TECHNOLOGIES.



www.panasonic.co.uk



A PHONE FOR EVERYONE IT'S YOUR CALL

PANASONIC DECT PHONES, ANSWERING SYSTEMS
AND LIFESTYLE TECHNOLOGIES.



A PHONE FOR EVERYONE IT'S YOUR CALL

PANASONIC DECT PHONES, ANSWERING SYSTEMS
AND LIFESTYLE TECHNOLOGIES.



Panasonic ideas for life

Panasonic ideas for life



For more information
and full product range
please visit the
Panasonic website
www.panasonic.co.uk



KX-TG9150ES
CHARLOTTE'S CALL
PAGE 2

KX-TG9140ES
JENNIE'S CALL
PAGE 4

KX-TG7180ES
MAUREEN'S CALL
PAGE 6

KX-TG7160ES
JOHN'S CALL
PAGE 8

KX-TC290ET
STEVE'S CALL
PAGE 10



For more information
and full product range
please visit the
Panasonic website
www.panasonic.co.uk



SPECIFICATIONS TALKING TECHNOLOGY

DECT MODEL	KX-TG9150ES	KX-TG9140ES	KX-TG9120ES	KX-TG7160/80ES	KX-TC290ET	KX-TC240ES	KX-TC280ES	KX-TG8120ES	KX-TG8100ES	KX-TG7120ES	KX-TG7100ES	KX-TG1100ES
General												
DECT / GAP	•/•	•/•	•/•	•/•	•/•	•/•	•/•	•/•	•/•	•/•	•/•	•/•
SMS *1,2	•	•	•	•	•	•	•	•*8	•*8	•*8	•	•
Multiple Handsets	up to 6	up to 6	up to 6	up to 6	up to 6	up to 6	up to 6	up to 6	up to 6	up to 6	up to 6	—
Multiple Bases	up to 4	up to 4	up to 4	—	up to 4	up to 4	up to 4	up to 4	up to 4	—	—	—
Voice Enhancer	•	•	•	—	•	•	•	•	•	—	—	—
Cordless Handset												
Navigation Key / Joystick	—/•	—/•	—/•	•/—	•/—	•/—	—/•	•/—	•/—	•/—	•/—	•/—
Illuminated Keypad	•	•	•	•	•	•	•	•	•	•	•	—
Speakerphone	•	•	•	•	•	•	•	•	•	•	•	—
Headset Jack	•	•	•	•	•	•	•	•	•	•	•	—
Ringer LED	•[3-colour]	•[3-colour]	•[3-colour]	•	•	•	•	•	•	•	•	•
Redial Memory	•[Latest 10]	•[Latest 10]	•[Latest 10]	•[Latest 10]	•[Latest 10]	•[Latest 10]	•[Latest 10]	•[Latest 10]	•[Latest 10]	•[Latest 10]	•[Latest 10]	•[Latest 10]
Auto Redial	•	•	•	•	•	•	•	•	•	•	•	•
Mute	•	•	•	•	•	•	•	•	•	•	•	•
Caller ID *1 Compatibility (Number of Logs)	•[50]	•[50]	•[50]	•[50]	•[50]	•[50]	•[50]	•[50]	•[50]	•[50]	•[50]	•[50]
Audible Caller ID	•	•	•	•	•	•	•	•	•	•	•	•
Private Ringing	•	•	•	•	•	•	•	•	•	•	•	•
Phonebook (Number of Entries) *3	200	200	200	50	200	200	200	200	200	50	50	50
Phonebook Copy *4	•	•	•	•	•	•	•	•	•	•	•	•
One touch dialing (Number of Entries)	9	9	9	—	9	9	9	9	9	—	—	9
Ringer Melody/Tones	14 / 6	14 / 6	14 / 6	10 / 5	10 / 5	10 / 5	14 / 6	14 / 6	14 / 6	10 / 5	5 / 5	14 / 6
Recordable Customised Ringer	•[about 4min. 30sec.]	•[about 4min. 30sec.]	•[about 4min. 30sec.]	—	—	—	—	—	—	—	—	—
LCD	Full-Dot, 1.5-inch Colour 256/65K colour 128x128 pixel	Full-Dot, 1.5-inch Colour 256/65K colour 128x128 pixel	Full-Dot, 1.5-inch Colour 256/65K colour 128x128 pixel	Dot, 16-digit, 3-line	Dot, 16-digit, 3-line	Dot, 16-digit, 3-line	Full Dot, 1.8-inch Colour	Full-Dot, 1.4-inch Colour	Full-Dot, 1.4-inch Colour	Dot, 16-digit, 3-line	Dot, 16-digit, 3-line	14-Seg., 12-digit, 1-line
LCD Backlight	•	•	•	•	•	•	•	•	•	•	•	•
Time & Date (Clock)	•[hour/min.]	•[hour/min.]	•[hour/min.]	•[hour/min.]	•[hour/min.]	•[hour/min.]	•[hour/min.]	•[hour/min.]	•[hour/min.]	•[hour/min.]	•[hour/min.]	•[hour/min.]
Alarm	•[Memo]	•[Memo]	•[Memo]	•[Time]	•[Time]	•[Time]	•[Memo]	•[Time]	•[Time]	•[Time]	•	•[Time]
Call Restriction	— [E/RU/UA/PD only]*8	— [E/RU/UA/PD only]*8	— [E/RU/UA/PD only]*8	—	•	•	•	•	•	•	•	•
Conference Call *4	•	•	•	•	•	•	•	•	•	•	•	•
Key Lock	•	•	•	•	•	•	•	•	•	•	•	•
Any Key Answer	•	•	•	•	•	•	•	•	•	•	•	•
Multiple Language Display	14 *8	14 *8	14 *8	14 *8	14	14	14	14 *8	14 *8	14 *8	14 *8	10
Night Mode	•	•	•	•	•	•	•	•	•	•	•	•
SMS Text Entry Method *5	LetterWise®	LetterWise®	LetterWise®	7 hours	7 hours	LetterWise®	LetterWise®	LetterWise®	LetterWise®	7 hours	7 hours	7 hours
Charge Time	7 hours	7 hours	7 hours	7 hours	7 hours	7 hours	7 hours	7 hours	7 hours	7 hours	7 hours	7 hours
Standby Time	240 hours	240 hours	240 hours	150 hours	240 hours	150 hours	150 hours	150 hours	150 hours	180 hours	180 hours	120 hours
Talk Time	15 hours	15 hours	15 hours	12/10 hours	24 hours	20 hours	14 hours	12 hours	17 hours	17 hours	17 hours	17 hours
Ringer Volume	6 steps +off	6 steps +off	6 steps +off	6 steps +off	6 steps +off	•	•	6 steps +off	6 steps +off	6 steps +off	6 steps +off	6 steps +off
Ear Receiver Volume	4 steps	4 steps	4 steps	4 steps	4 steps	•	•	4 steps	4 steps	4 steps	4 steps	3 steps
Baby Monitor	•*4	•*4	•*4	—	—	•	•*4	—	—	—	—	—
PC Connection / Infrared	•	•	•	—	—	—	USB /•	—	—	—	—	—
Doorphone	•	•	•	•	•	•	•	•	•	•	•	•
Skype™	Y	Y[with TGA915ES]	Y[with TGA915ES]	—	—	—	—	—	—	—	—	—
Camera (need color handset)	Y[with TGA914ES]	Y	Y[with TGA914ES]	—	—	—	—	—	—	—	—	—
Dial number announce	•	•	•	•	•	•	•	•	•	•	•	•
Voice Number Announce*1	•	•	•	•	•	•	•	•	•	•	•	•
Big Button	•	•	•	•	•	•	•	•	•	•	•	•
Bone Conduction	•	•	•	•	•	•	•	•	•	•	•	•
Optional Handset/Accessories	KX-TGA910ES KX-TGA914ES (up to 5 unit)	KX-TGA910ES, KX-TGA914ES (up to 5 unit), KX-TGA915ES (only 1 unit)	KX-TGA910ES KX-TGA914ES (up to 5 unit), KX-TGA915ES (only 1 unit)	KX-TGA915/717ES	KX-TCA128ET	KX-TCA121ES	KX-TCA181ES	KX-TGA810ES	KX-TGA810ES	KX-TGA711ES	KX-TGA711ES	not available
Base Unit												
Keypad	—	—	—	—	—	•	—	—	—	—	—	—
Navigation Key	—	—	—	—	—	•	—	—	—	—	—	—
Phonebook	up to 20	up to 20	up to 20	—	—	20	20	—	—	—	—	—
LCD	—	—	—	—	—	7-segment, 2-digit / —	—	—	—	—	—	—
Speakerphone	—	—	—	—	—	—	—	—	—	—	—	—
Ringer Tone	1	1	1	1	1	6	1	1	1	1	1	—
Wall Mount	•*10	•*10	•*10	•*10	•	•	•	•*10	•*10	•*10	•*10	•
Redial/Auto Redial	—	—	—	—	—	•/—	—	—	—	—	—	—
Caller ID/Caller ID Log	—	—	—	—	—	—	—	—	—	—	—	—
TAM Operation Keys	•	•	•	•	•	•	•	•	•	•	•	•
Intercom or Paging	Paging	Paging	Paging	Paging	Paging	Paging/Intercom	Paging	Paging	Paging	Paging	Paging	Paging
Digital Telephone Answering Machine (TAM)												
Total Recording Time	40 min. *8	40 min. *8	40 min. *8	20 min. *8	15 min. *8	15 min.	15 min.	40 min. *8	—	20 min. *8	—	—
2-Way Recording (Record call)	— [E/RU/UA/PD only] *8	— [E/RU/UA/PD only] *8	— [E/RU/UA/PD only] *8	•	•	•	•	•	•	•	•	•
Call Screening	•	•	•	•	•	•	•	•	•	•	•	•
Dimensions / Weight												
Base Unit WxDxH (mm)	173 x 99 x 63	173 x 99 x 63	173 x 99 x 63	173 x 105 x 40	185 x 119 x 75	183 x 122 x 86	110 x 168 x 54	173 x 99 x 63	173 x 99 x 63	173 x 105 x 40	173 x 105 x 40	123 x 115 x 58
Handset WxDxH (mm)	49 x 34 x 156	49 x 34 x 156	49 x 34 x 156	48 x 34 x 179	53 x 37 x 178	48 x 32 x 148	48 x 34 x 155	48 x 34 x 155	48 x 34 x 155	48 x 34 x 155	48 x 34 x 155	48 x 32 x 143
Camera/Skype™ Adaptor WxDxH (mm)	42 x 74 x 15	86 x 68 x 124	—	—	—	—	—	—	—	—	—	—
Base Unit (g)	250	250	250	250	250	250	332	210	210	260	220	180
Handset (g)	140	140	140	150/160	190	130	154	140	140	140	140	120
Camera/Skype™ Adaptor (g)	30	150	—	—	—	—	—	—	—	—	—	—

*1 Requires subscription to this service offered by your telephone company. *2 SMS log capacity will vary from 47 logs for 160-character messages to 69 logs for 80-character messages. *3 TCD810/820: One number registered; 200: Two numbers registered; 133: Three numbers registered; 100: 4 Optional handset required. *5 Letterwise is a registered trademark of Eaton Ergonomics, Inc. *6 Based on ITU-T No.1 test chart. *7 Max. 28 pages for out of paper reception. *8 Specification may vary by country version. *9 Only Bundle Model. *10 Optional Wall Mount Adaptor Required.

Personal communications are a vital part of our lives and whatever your needs, you'll find a Panasonic phone to suit you. Whether you're at work or at home, you can trust us for the most important communications in the world. We've got twelve models for you to choose from.

A PHONE FOR EVERYONE IT'S YOUR CALL

PANASONIC DECT PHONES, ANSWERING SYSTEMS
AND LIFESTYLE TECHNOLOGIES.



KX-TCD240ES
MARC'S CALL
PAGE 12



KX-TCD820ES
MARIA'S CALL
PAGE 14



KX-TG8120ES
KELLY'S CALL
PAGE 16



KX-TG8100ES
ELLA'S CALL
PAGE 18



KX-TG7120ES
SCOTT'S CALL
PAGE 20

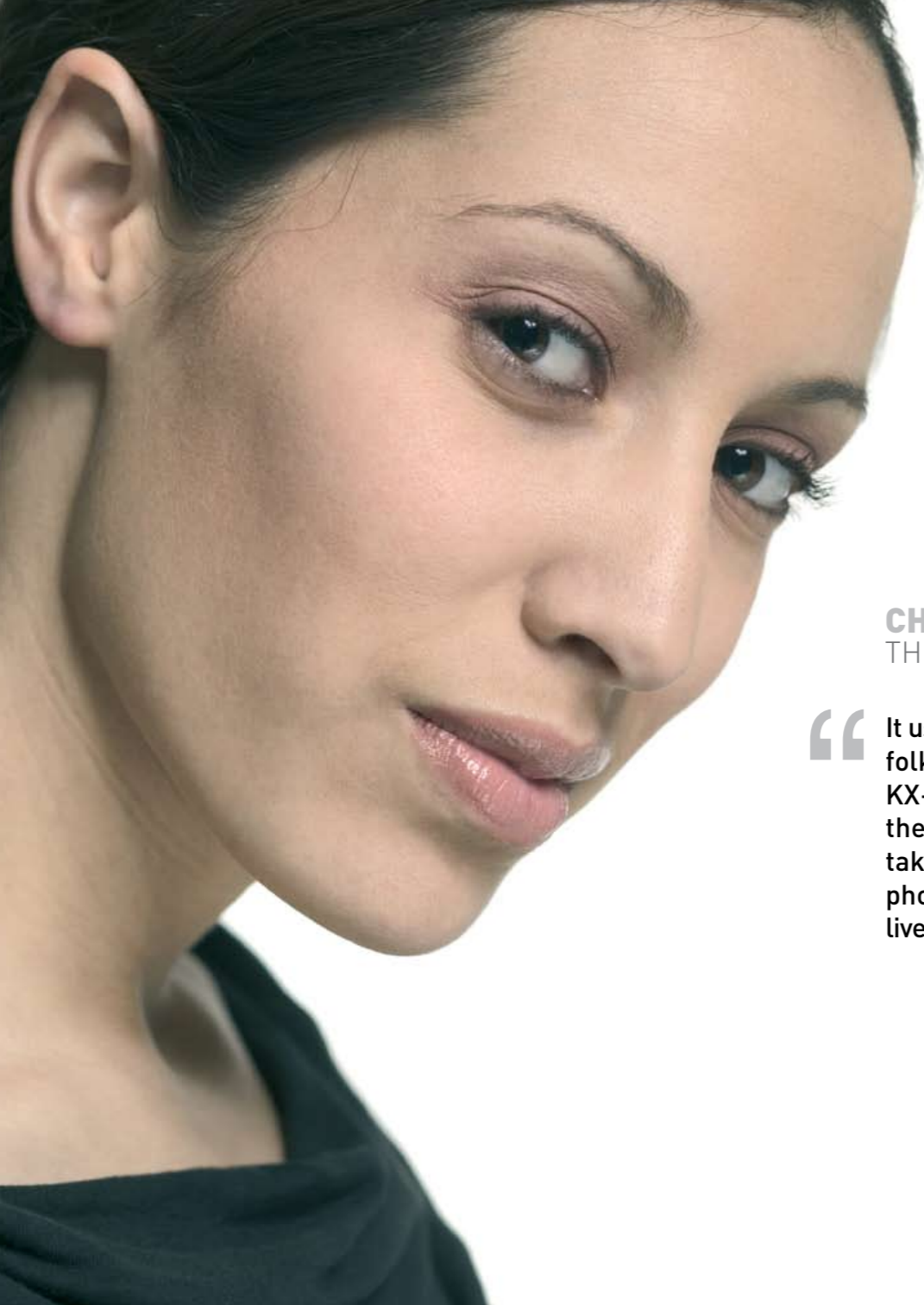


KX-TG7100ES
CHARLIE'S CALL
PAGE 22



KX-TG1100ES
MOHAMID'S CALL
PAGE 24

Panasonic ideas for life



CHARLOTTE'S CALL:
THE PANASONIC KX-TG9150ES

“ It used to cost me a small fortune to phone my folks back in Oz, but with my new Panasonic KX-TG9150ES Skype™ phone, I can call them whenever I like without having to take out a second mortgage! I'm on the phone so often now, it's easy to forget they live half-way round the world. ”



THE PANASONIC KX-TG9150ES
DECT SKYPE™ PHONE

- Switchable between landline & Skype™
- 40 mins Answering Machine
- 1.5 inch 65k colour screen
- Recordable Customised Ringer
- 200 Phonebook
- SMS



KX-TG9120ES
AVAILABLE AS SINGLE
PHONE WITHOUT SKYPE™



KX-TGA910ES
EXTRA HANDSET



KX-TGA914ES
CAMERA UNIT



JENNIE'S CALL:
THE PANASONIC KX-TG9140ES

“ I love my new mother's help – my Panasonic KX-TG9140ES phone! I can use the phone's monitor as a visual baby monitor, so rather than running upstairs at every whimper; I can simply check that he's OK on my phone's screen and soothe him back to sleep again by talking to him. It's great for peace of mind and means I can get on with my jobs without constant interruptions. ”



THE PANASONIC KX-TG9140ES
DECT MONITORING PHONE

- Monitoring Camera (Vision & Sound)
- 40 mins Answering Machine
- 1.5 inch 65k colour screen
- Recordable Customised Ringer
- 200 Phonebook
- SMS



KX-TG9120ES
AVAILABLE AS SINGLE
PHONE WITHOUT CAMERA



KX-TGA910ES
EXTRA HANDSET



KX-TGA915EXS
SKYPE™ ADAPTOR



MAUREEN'S CALL:
THE PANASONIC KX-TG7180ES

“ My Panasonic KX-TG7180ES phone has literally changed my life. When my hearing started to deteriorate a few years ago, talking on the phone became increasingly difficult – I could hardly hear people on the other end, and was embarrassed to even answer the phone at all. Now, thanks to Panasonic’s revolutionary bone conduction technology, I have no such fear and I’m never off the phone to my friends catching up on all the gossip! ”



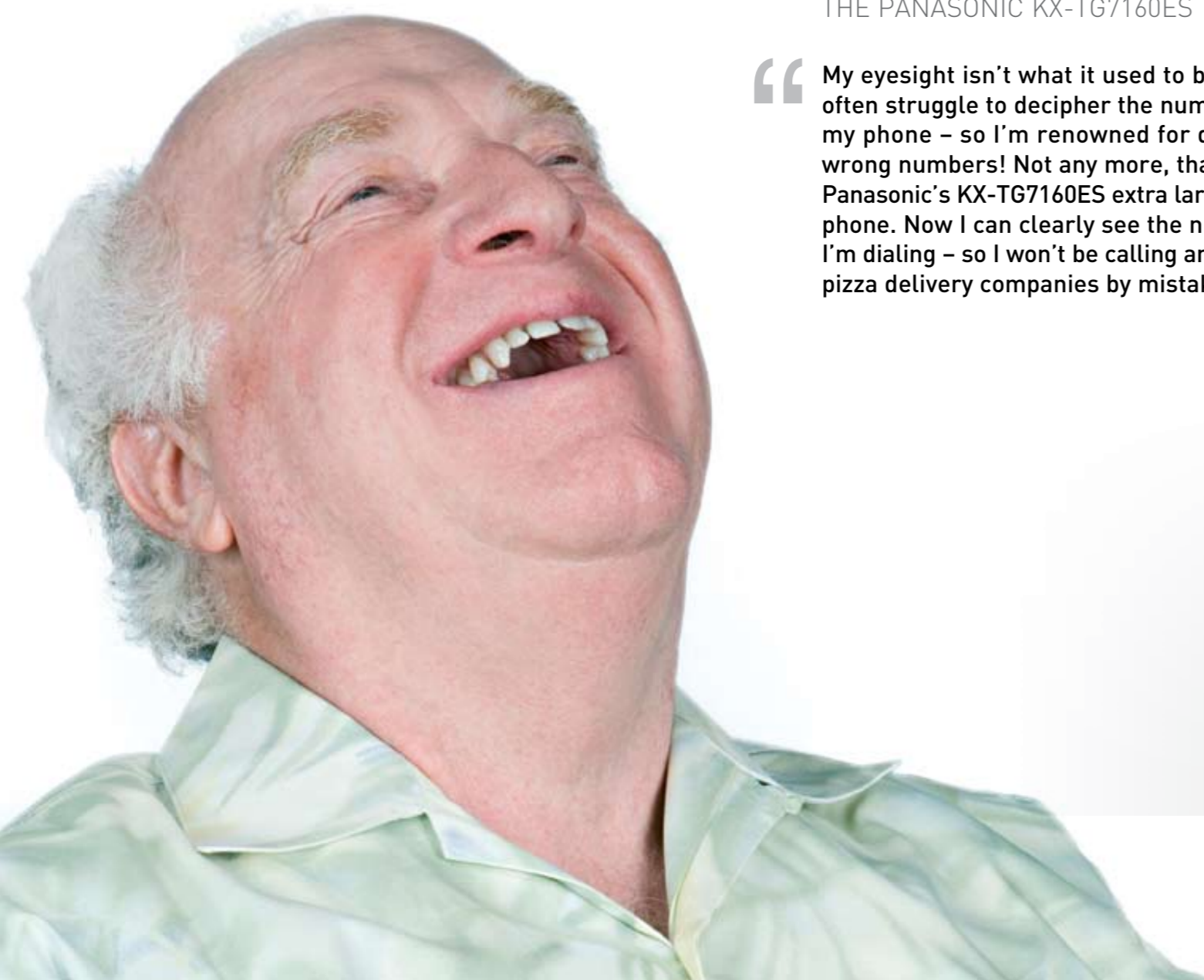
THE PANASONIC KX-TG7180ES

**BONE CONDUCTION DECT PHONE
WITH ANSWERING MACHINE**

- Bone Conduction for enhanced hearing ability
- 20 mins Answering Machine
- Big Buttons
- 50 Phonebook
- Speakerphone
- Headset Jack



KX-TGA717ES
EXTRA HANDSET



JOHN'S CALL:
THE PANASONIC KX-TG7160ES

“ My eyesight isn't what it used to be and I often struggle to decipher the numbers on my phone – so I'm renowned for dialing wrong numbers! Not any more, thanks to Panasonic's KX-TG7160ES extra large button phone. Now I can clearly see the numbers I'm dialing – so I won't be calling any more pizza delivery companies by mistake! ”



THE PANASONIC KX-TG7160ES

**BIG BUTTON DECT PHONE
WITH ANSWERING MACHINE**

- 20 mins Answering Machine
- Big Buttons
- 50 Phonebook
- Speakerphone
- Headset Jack
- Illuminated Keypad



KX-TGA715ES
EXTRA HANDSET



STEVE'S CALL:
THE PANASONIC KX-TCD290ET

“ When I'm fixing my car in the garage, I always get into a real mess. So, now I've installed a Panasonic KX-TCD290ET ruggedised, splash and shock resistant phone, I can call my spare parts suppliers directly from my workshop. It also means I don't need to dirty the carpets in the house whenever I need to make or take a call. I'm happy – so's the missus! ”



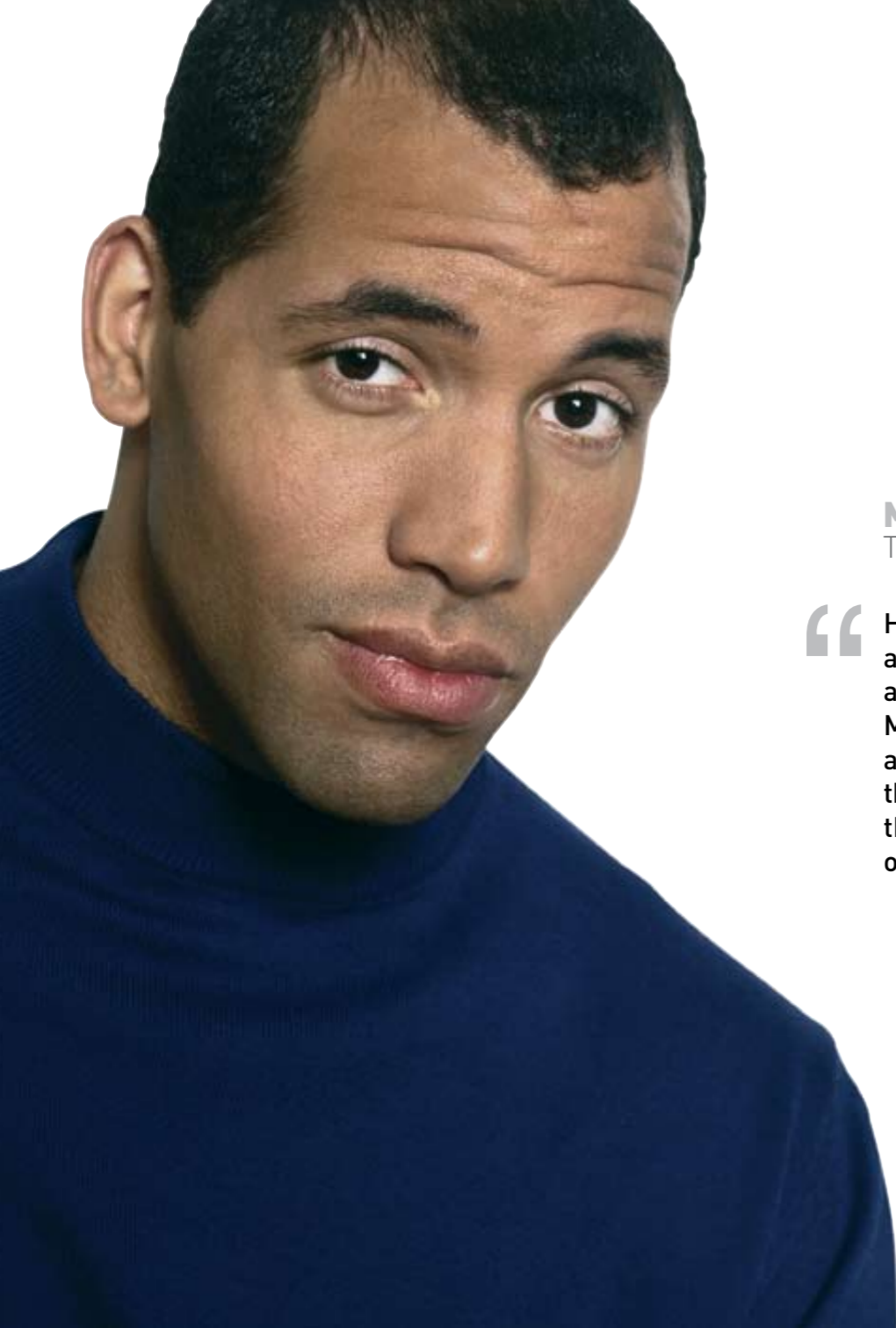
THE PANASONIC KX-TCD290ET

**RUGGERDISED DECT PHONE
WITH ANSWERING MACHINE**

- 15 mins Answering Machine
- IP54 Compliant (Shock & Splash Proof)
- 200 Phonebook
- SMS
- Headset Jack
- Speakerphone



KX-TCA128ET
EXTRA HANDSET



MARC'S CALL:
THE PANASONIC KX-TCD240ES

“ Having just started up a new business based at home, keeping in touch with my customers and suppliers is critical to my business. My new Panasonic KX-TCD240ES phone with a dual keypad is great in my office, as it means that I can still answer calls even when I leave the phone downstairs – so I’m never out of contact. ”



THE PANASONIC KX-TCD240ES

**DUAL KEYPAD DECT PHONE
WITH ANSWERING MACHINE**

- 15 mins Answering Machine
- Dual Keypad
- 200 Phonebook
- Audible Caller ID
- SMS
- Speakerphone



KX-TCA121ES
EXTRA HANDSET



MARIA'S CALL:
THE PANASONIC KX-TCD820ES

“ My girlfriends are envious of my new Panasonic KX-TCD820ES phone. The colour screen and full graphics package lets me change the look of my phone and personalise it whenever I like. I am always downloading new screensavers, to match my mood. I love it, as I can change the look of my phone now as often as my hairstyle! ”



THE PANASONIC KX-TCD820ES

**FLAGSHIP DECT PHONE
WITH ANSWER MACHINE**

- 15 mins Answering Machine
- High Quality Design
- Fully Graphic 65k 1.8 inch Colour Screen
- Infrared I/USB Port for downloaded pictures and ringtones
- 200 phonebook
- SMS



KX-TCA181ES
EXTRA HANDSET



KELLY'S CALL:
THE PANASONIC KX-TG8120ES

“ I'm always on the go and virtually live at the gym. As I'm rarely at home, my Panasonic KX-TG8120ES phone is a life saver. With over 40 minutes answering machine time, my friends can leave as many messages as they like, then I can then listen to them whenever I have the time and most importantly, my social life never suffers. ”



THE PANASONIC KX-TG8120ES

**COLOUR SCREEN DECT PHONE
WITH ANSWERING MACHINE**

- 40 mins Answering Machine
- SMS
- 200 Phonebook
- Headset Jack
- Private Ringing
- Speakerphone



KX-TG8122ES
TWIN PACK

KX-TGA810ES
EXTRA HANDSET



ELLA'S CALL:
THE PANASONIC KX-TG8100ES

“ I wanted a phone that was easy to use and had a large screen, so I bought the Panasonic KX-TG8100ES and I wasn't disappointed. It has an impressive 1.4 inch colour screen, which is such a fantastic, vibrant colour. I was also attracted to the stylish design, which adds a touch of sophistication to my home. ”



THE PANASONIC KX-TG8100ES

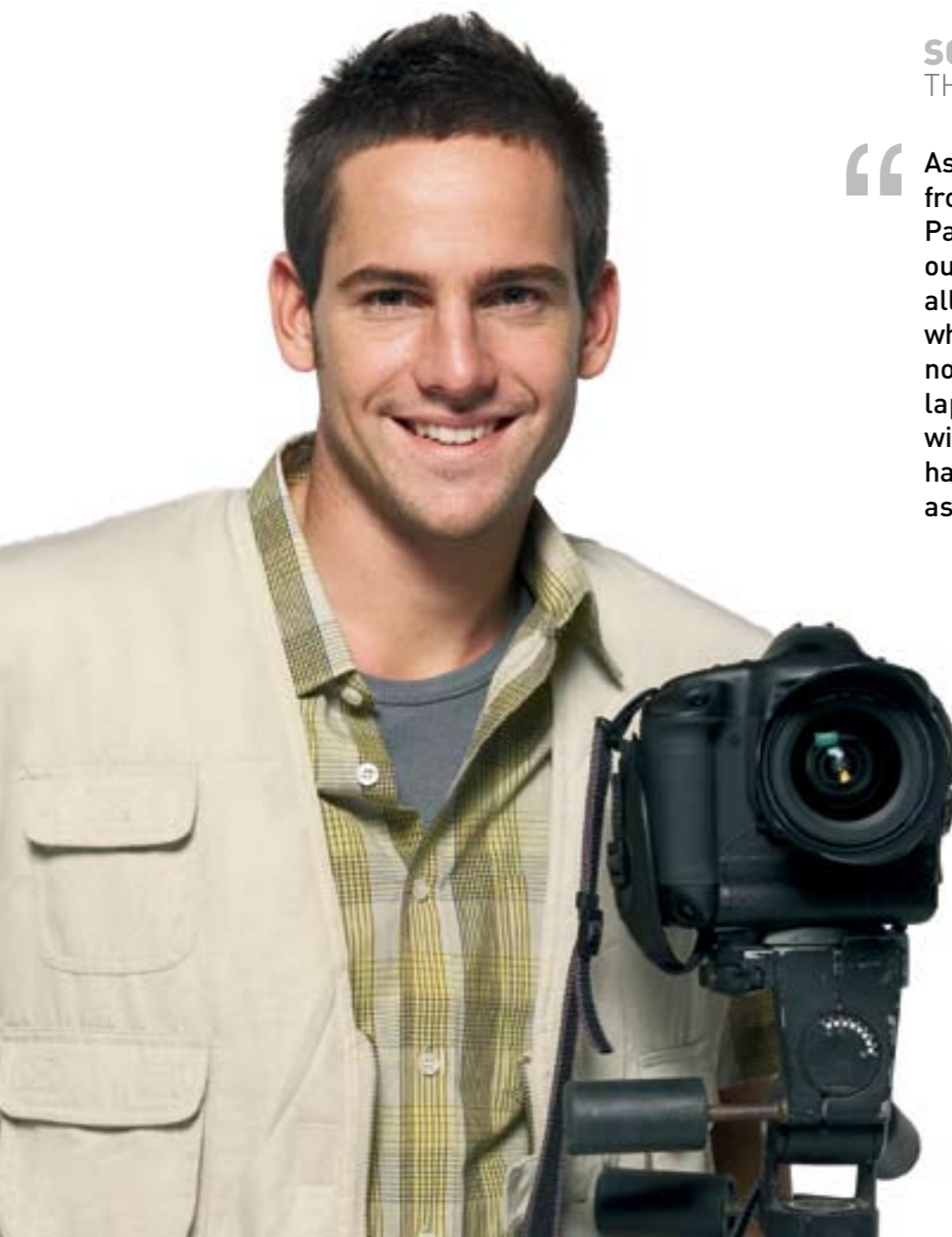
COLOUR SCREEN DECT PHONE

- 200 Phonebook
- SMS
- Headset Jack
- Private Ringing
- Speakerphone
- Night Mode



KX-TG8102ES
TWIN PACK

KX-TG810ES
EXTRA HANDSET



SCOTT'S CALL:
THE PANASONIC KX-TG7120ES

“ As a photographer, taking the right brief from my clients is critical. This is where the Panasonic KX-TG7120ES phone helps me out. It has a built-in speakerphone, which allows me to discuss briefs with my client while still having two hands free to jot down notes or to search image libraries on my laptop. I also won't miss any calls now, with my 20 minutes of answering machine. It has become the trusty photographer's assistant in my office! ”



THE PANASONIC KX-TG7120ES
FEATURED DECT PHONE WITH ANSWERING MACHINE

- 20 mins Answering Machine
- GAP (multiple handsets up to 6)
- Illuminated Keypad
- Speakerphone
- 50 Phonebook
- 3 line LCD with backlight



KX-TG7122ES
TWIN PACK

KX-TG7123ES
TRIPLE PACK

KX-TG7124ES
QUAD PACK

KX-TGA711ES
EXTRA HANDSET



CHARLIE'S CALL:
THE PANASONIC KX-TG7100ES

“ I really wanted a high-spec phone, with lots of functionality but my budget was tight, so I purchased the Panasonic KX-TG7100ES digital phone with the piece of mind that it is crammed with technology at a value for money price. ”



THE PANASONIC KX-TG7100ES
FEATURED DECT PHONE

- GAP (multiple handsets up to 6)
- Illuminated Keypad
- Speakerphone
- 50 Phonebook
- 3 line LCD with backlight
- Caller ID (50 call log)



KX-TG7102ES
TWIN PACK

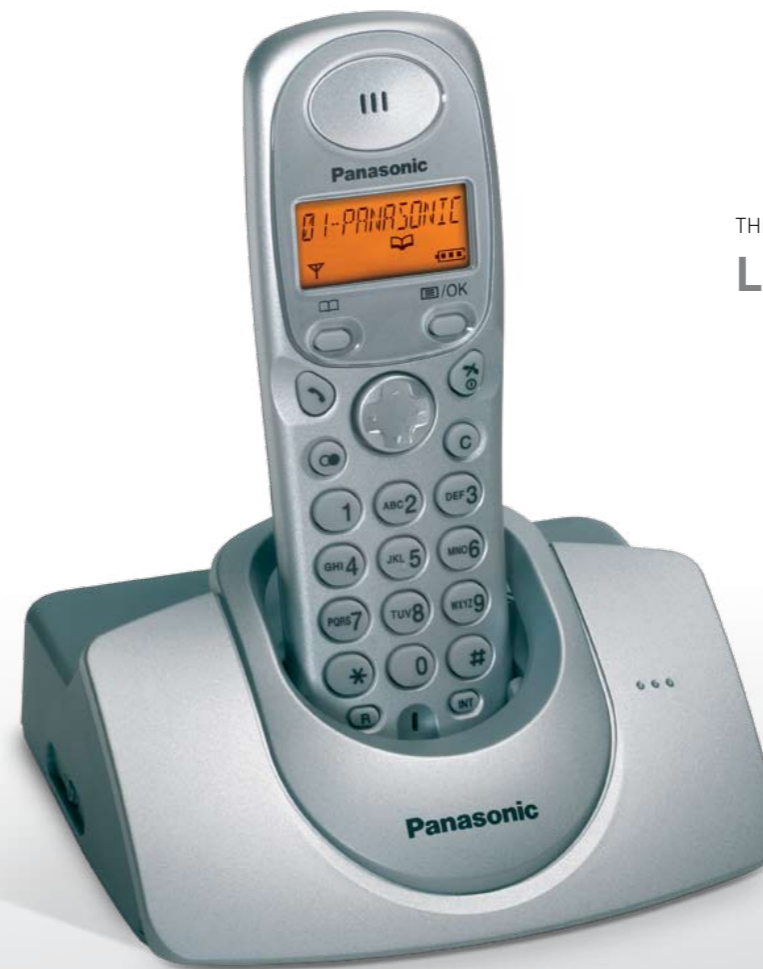
KX-TG7103ES
TRIPLE PACK

KX-TGA711ES
EXTRA HANDSET



MOHAMID'S CALL:
THE PANASONIC KX-TG1100ES

“ I'm not very good with technology, so I just wanted a phone that was easy to use and good value for money. The Panasonic KX-TG1100ES does exactly that and looks good too, with its smart and durable silver finish. It gives me the things that I do need like caller ID log functionality and easy number redial, but isn't at all confusing to use for a technophobe like me! ”



THE PANASONIC KX-TG1100ES

LEADER DECT PHONE

- Speakerphone
- 50 Phonebook
- 1 line LCD with backlight
- Caller ID (50 call log)
- Time, Date & Alarm
- Key Lock

FEATURE DESCRIPTIONS

TALKING TECHNOLOGY



Audible Caller ID

Audible Caller ID will speak the name of the caller between intermittent ringtones.

Baby Monitor

Use your phone as a baby monitor to see and speak to your baby. An additional handset may be needed.

Bone Conduction

Technology which enables sound to be sent directly to your inner ear, bypassing the outer and middle ear. It helps people with conductive hearing impairments to hear more clearly.

Caller ID (CLI)

Displays the caller's name (service subscription required, or stored in directory) and number, so you can see who's calling or screen your calls.

Camera Compatible

The Monitoring Camera will enable the user to view and communicate to the room from their DECT handset.

Doorphone Compatible

Enables the DECT phone to be connected to a door entry system, allowing the user to communicate and release the door lock with their handset.

GAP Compatible

Industry standard feature enables you to register one DECT phone to another.

Hands-Free Speakerphone

You can talk without taking the handset from the base. Convenient for talking while doing something else.

Headset Jack

Plug in the optional headset and the hands-free facility provides total ease and freedom of use.

Illuminated Keypad

Lights up when there is an incoming call or you touch any key for easier operation even in the dark.

IrDA Infrared

Transfer pictures, ringtones and contacts from your mobile phone IrDA port.

LCD Backlight

Lights up when there is an incoming call or you touch any key for easier operation even in the dark.

Multiple Handsets

Up to 6 handsets can be registered with a single base unit for added convenience. (Operational handset/charger is available separately.)

Night Mode

Filter calls during unsociable hours by pre-selecting the hours that are unsociable and categorizing your phone book.

Private Ringing

Assign different ringtones to different callers to enable you to establish who is calling without picking up the phone.

Recordable Customised Ringer

Record your own ringtones.

Skype™ Compatible

Skype™ is a software package that enables sound to be transmitted through the internet (VOIP) via a broadband connection.

SMS (Short Messaging Service)

The convenience of sending and receiving text messages from a home telephone.

Standby

Number of hours available in the standby mode even when the handset is not connected to the base/charger unit.

Talk Time

The number of hours, of continuous use available, with a single charge.

Telephone Answering Machine (TAM)

Up to 40 minutes* recording time, with time/day stamp that records when messages were received and counts the total number.

True Tones

Full sound tones for music / ringtones.

USB Port

Manage your phonebook on your PC – download photos for your wallpaper.

Voice Search

Just say the name of the person whose number you want to find and your phone will look it up for you in the built-in directory, then display the number.

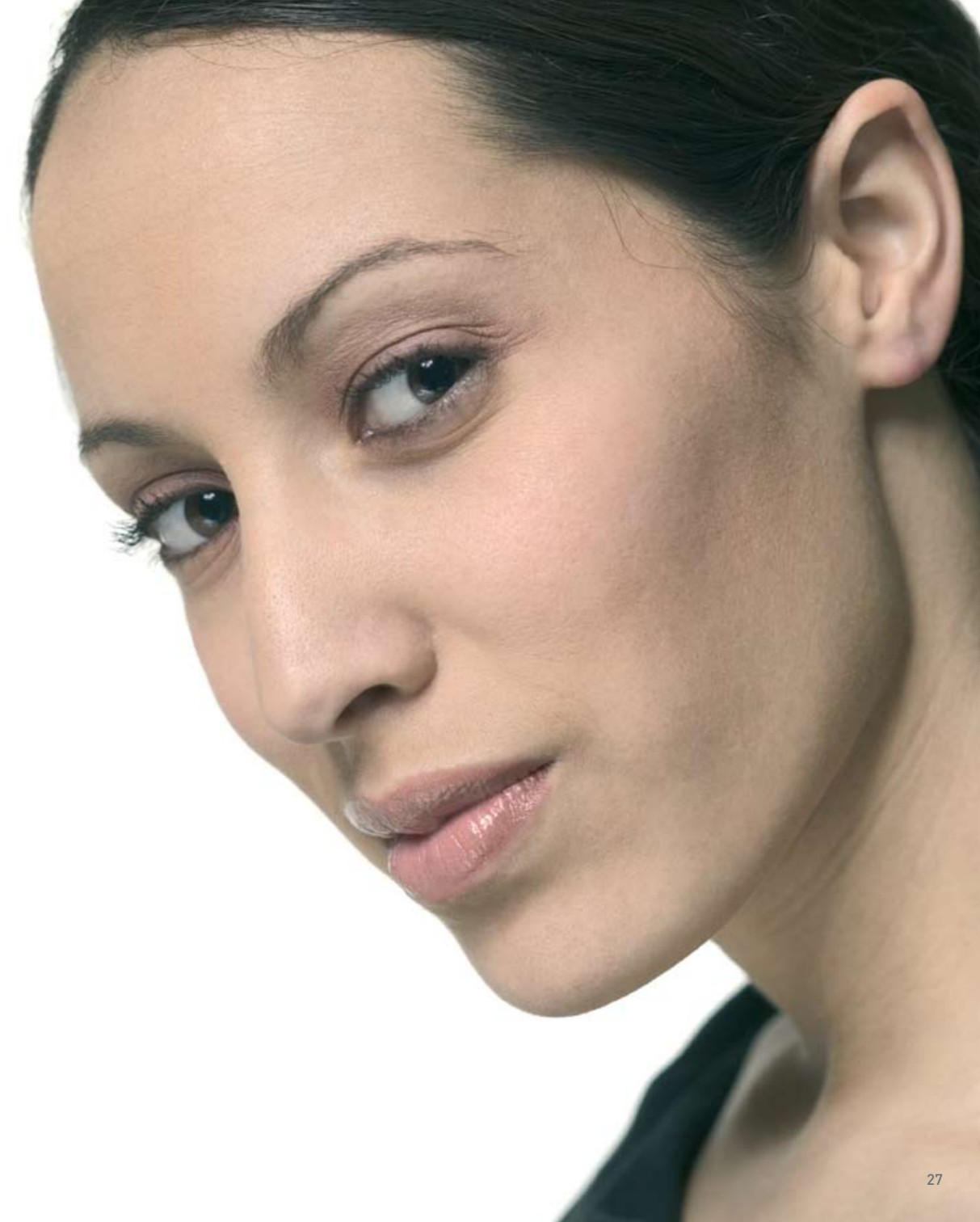
VoIP (Voice over Internet Protocol)

Technology used to transmit voice conversations over a data network using the Internet Protocol.

200 Name Phonebook

Stores 200* names and numbers with the built-in telephone directory to be recalled easily.

* Subject to model





We produce technologies that make a real difference to your everyday life...

