



Everywhere 4G Unlimited Range Two Way Radio



USER MANUAL



Warning

- Flammable environment (gas, dust and fog, etc.)
- Please turn off the radio before getting close to the blasting zone or detonato handset.

General information before use

Please observe the following instructions to prevent fire, injury or damage to the handset.

- ⓈThe recommended use pattern is 1 min of emission and 4 mins of receives. Constant emission over long time will cause over heat on the back side. Do not let the back touch any plastic surface when put it down.
- ⓈProhibit to modify this product in any case.
- ⓈPlease do not expose the handset to long-time direct sunlight, neither to close any heat source.
- ⓈPlease do not expose the handset to dust, damp and spill. and over object that is unstable.
- ⓈIf abnormal odor or smoke noted from the handset, please shut down immediately, remove the battery unit, and contact our local authorized service provider.

Contents

| | |
|--|----|
| Unpacking and checking equipment | 01 |
| Accessories | 01 |
| Preparation work | 02 |
| Using the Lithium Battery | 03 |
| Feature of the Lithium Battery | 03 |
| Charging for the Lithium Battery | 03 |
| Installing accessories | 04 |
| Installing/Removing Battery | 04 |
| Installing antenna | 05 |
| Installing the belt clip | 05 |
| Installing sling | 06 |
| Installing headset | 06 |
| Overview | 07 |
| Basic Function | 08 |
| Volume selector/ON and OFF switch | 08 |
| Group Call | 08 |
| Private Call | 08 |
| Record play back | 08 |
| SOS | 08 |
| Factory Reset | 08 |
| Voice prompt on version No. | 08 |
| Functions Introduction | 09 |
| Battery Pack Installation and SIM card | 09 |
| Basic use | 09 |
| Private Call | 09 |
| Group Switch | 09 |
| Debug | 10 |
| System Parameter | 11 |
| Specification | 11 |
| Indicator Light | 11 |

Unpacking and checking equipment

Note: Following instructions is only suitable for authorized retailers and service providers.
Carefully unpack the radio. We recommend you check the items listed in the following table before discarding the package. If any item is missing, please contact local dealer immediately.

Accessories:

| Items | Number |
|-----------------|--------|
| Handset | 1 |
| Lithium battery | 1 |
| Charger | 1 |
| Power adaptor | 1 |
| Antenna | 1 |
| Sling | 1 |
| Belt clip | 1 |
| User manual | 1 |

01

Preparation work

Warning

※ Do not overcharge with the battery

Please stop to charging if it is uncompleted in normal time. The battery may flame, smoke or crack due to abnormal charging process.

※ Do not put battery into the microwave or high pressure container

The battery may flame, smoke or crack.

※ Do not expose broken battery to any flame.

If the battery is seen broken (or with abnormal odor), please remove it from flammable condition immediately. The fluid in battery is really flammable, which may cause flame or smoke.

※ Do not use abnormal battery

If the battery is abnormal in odor, color, shape or any other form, please remove it from charger or radio and do not use it anymore.

※ Please use exclusive adaptor

The adaptor in accessories is designed exclusively for the bought radio. It ensures the safety and reliability of battery charging.

02

Using the Lithium Battery

Charge before use

To reduce electrical emission in battery, please remove the battery from device if not in use within a long time. Please keep the battery in cool and dry places.

When keeping battery for a long time:

1. Remove battery from device;
2. If possible, please fully charge the battery before store;
3. Store the battery in places that are cool and dry (with the temperature lower than 25 Celsius);

Feature of the Lithium Battery

- ※ After repeated charging process, the capacity will decrease.
- ※ The battery degenerates gradually even without being used.
- ※ More time will be required when Lithium battery is being charged in cool condition.
- ※ Charging and storage of Lithium battery in relatively warm condition will jeopardize its service life. Please do not keep them inside the vehicle or near heating equipment.
- ※ If the duration of battery shortens significantly, please replace the battery immediately to prevent fluid leak.

Charging Lithium battery

After the AC adapter is connected and the battery is well placed, the indicator will show red which means the charging is in progress. Green will indicate that the battery is fully charged. The indicator will go off if the temperature is not proper, or the battery is damaged or the connection is poor.

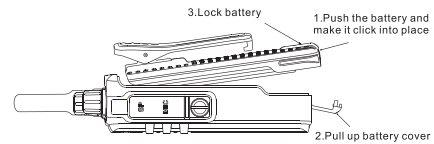
03

- ※ Do not short circuit the battery terminal, or put the battery in fire.
- ※ Do not attempt to remove the shell of battery.
- ※ Do not install battery in any dangerous condition, since the possible flame may cause explosion.

Installing accessories

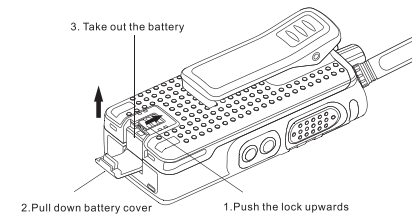
Installing battery

Insert the battery properly and press down on the other end of the battery. Then Pull up the battery cover with a "click".



Removing battery

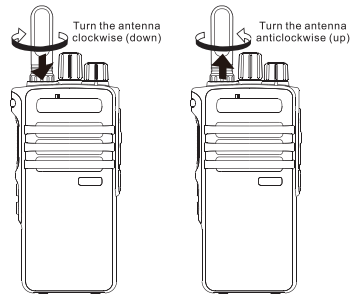
To remove battery, turn off the radio and push upward the lock catch of battery. Then push the battery as arrow pointed and take off the battery.



04

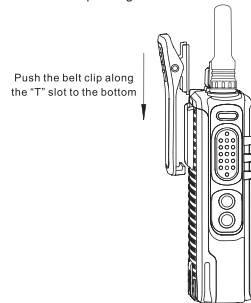
Installing antenna

Screw the antenna into the connector on the top of radio and turn the antenna clockwise to fasten it. Turn the antenna anticlockwise to remove it.



Install the belt clip

Push the belt clip along the "T" slot to the bottom.

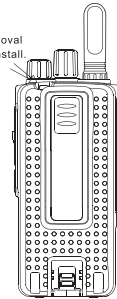


05

Installing sling

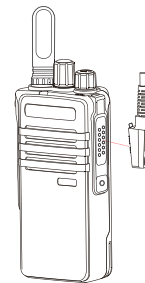
Take the tail of sling across the oval hole on the back of handset to install.

Take the tail of sling across the oval hole on the back of handset to install.



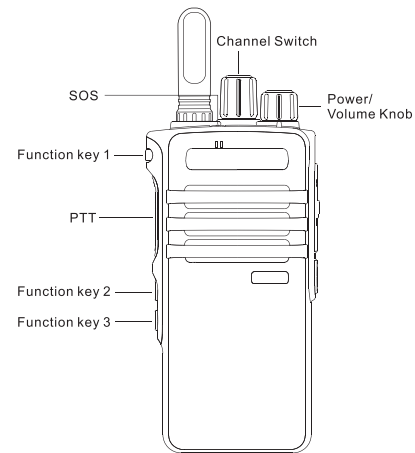
Installing headset

Open the cover from the top of device to show the headset sockets. Headset will work immediately after being plugged in.



06

Overview



07

Basic Function

- **Power on/off**
Turn Volume/Power knob clockwise to power on.
Turn Volume/Power knob anticlockwise to power off.
- **Volume control**
Turn Volume/Power knob to adjust volume after power-on.
- **Group Selection**
Rotate group switch key to select group.
- **Group Call**
Press PTT with red indicator on and start talk.
Keep 3-4cm away from Microphone while talking.
Release PTT key with green indicator on to receive message.
- **Private Call**
Long press Function key 2 to start Private calls . Then press function Key 2 or 3 to select the member. Private call starts by pressing PTT. Once done, press PTT talk. End private call by pressing the key again.
- **Record play back**
Short press function key 2 to play back the record of current group.
Press function key 2/3 to select record. 10 records play-back are available for each group.
- **SOS**
Long press SOS to start SOS. No key works during SOS. SOS lasts for 30 sec. totally. Once SOS starts, there is SOS voice prompt which lasts for 6 sec. Then auto group call starts.
- **Factory Reset**
Long press function key 2 and SOS to power on. Then all the APK parameters have been cleaned up.
- **Voice prompt on version No.**
Long press function key 1 and function key 2 for voice prompt on version No.
- **Voice prompt on remaining time of APK account**
Press function key 1 for voice prompt on remaining time of APK account.

08

Functions Introduction

1. Attach battery and insert SIM card

Pls insert valid SIM card (User identification) in network radio before using. All network linking information has been recorded in SIM card which could be used in any WCDMA mobile.

- (1) Turn the volume/power knob to power off.
- (2) Take away the battery as indicated above.
- (3) Insert SIM card by pushing away the upper cover of SIM card holder properly.
- (4) Put back the battery with battery cover.

Tips: Pls power off before take out of battery. Don't take away the battery when power on as it may possibly cause data loss and even eternal damage .

2. Basic use

Power on: Turn the power /volume knob to power on when power off. During power-off, there is voice prompt . After power on, green indicator is on and then blinks. It is searching network. There is voice prompt after successful internet access.

Power off: Turn the power /volume knob to power off when power off. During power-on, Indicator will be off.

Volume adjust: Increase volume by turning clockwise. And vice versa.

Headset: Press PTT key on headset to call and release to cancel call.

There is voice prompt fo lower battery when it is lower than 3.3V.

3. Private call

Start private call by long pressing function key 2. Reprress function key 2/3 to select member and talk by pressing PTT key. (Voice prompt for current group member name and its status of on-line/ offline. It will be failed if off-line) Temporary group will be auto created .

4. Group Switch

Before switching ON, user needs to revolve the selector to Channel 1 (The default session is Channel 1, revolve to select other sessions. If the session is not available, there will be voice prompt : No Channel).

Debug

If your handset shows following problem in use, please check the instruction below, and if the issue still persists, please contact local authorized service.

1. Poor reception:

Possible reasons: Signal over your current location is weak (such as basement or next to a blocking building), or the network is busy (such as during rush hours).

Solutions: a. Please move to somewhere with improved signal.
b. Please avoid using at that moment or wait for while before another attempt.

2. Echo or noise:

Possible reason: The quality of network service provider is flawed.

Solution: Restart the radio will let it automatically search for available network with better quality.

3. Less duration:

Possible reasons: The duration depends a lot on the settings by network service provider. Using and charging the handset under condition with high temperature will also jeopardize the battery duration. Searching for network constantly in weak-network area will also lower the duration.

Solution: If you are at place with weak signal, please temporarily switch OFF the handset.

4. Unable to connect to network:

Possible reasons: SIM card not effective, poor signal, out of network service area.

Solutions: Replace another SIM card, move to somewhere open and flat, if you are in the building , move near to the window.

System Parameter

| | | |
|---------------------|---------------------|--|
| Operating system | Android | |
| Receive sensitivity | -106dBm | |
| Working temperature | -10°C~+55°C | |
| Storage temperature | -40°C~+85°C | |
| Voltage | 3.7V | |
| Frequency | North American | GSM: B2, B5 |
| | | WCDMA: B1, B2, B5, B8 |
| | | FDD: B1, B2, B4, B5, B7, B12, B13, B17, 28A, 28B |
| Transmit power | 23dBm~30dBm@-104dBm | |
| Sound output power | 2W@10%distortion | |

Specification

| | |
|--------|-------------|
| Size | 125*64*35mm |
| Weight | 310g |

Indicator light

| Device Status | Indicator Status | Frequency |
|--|--------------------|--------------------|
| Power on | Green on | |
| Network search after power on | Green flashes fast | Flash every 3 secs |
| Press PTT button to start transmission | Red on | |
| Release PTT button to end transmission | Red light off | |
| Receiving message | Green on | |
| Finish receiving | Green light off | |
| Lower battery | Red flashes fast | Flash every 3 secs |

FCC RF Exposure Information and Statement

This device meets the government's requirements for exposure to radio waves. The guidelines are based on standards that were developed by independent scientific organizations through periodic and thorough evaluation of scientific studies. The standards include a substantial safety margin designed to assure the safety of all persons regardless of age or health. The SAR limit of USA (FCC) is 1.6 W/kg averaged. Device types: Intelligent Two Way Radio (FCC ID: 2AIV6-T522A) has also been tested against this SAR limit. SAR information on this and other pad can be viewed on-line at <http://www.fcc.gov/oet/ea/fccid/>. Please use the device FCC ID number for search. This device was tested simulation typical 0mm to body and 25 mm front of face. To maintain compliance with FCC RF exposure requirements, use accessories should maintain a separation distance between the user's bodies mentioned above. the use of belt clips, holsters and similar accessories should not contain metallic components in its assembly, the use of accessories that do not satisfy these requirements may not comply with FCC RF exposure.

FCC Warning

This device complies with Part 15 of the FCC Rules. Operation is subject to the following two conditions:

(1) This device may not cause harmful interference, and (2) This device must accept any interference received, including interference that may cause undesired operation.

NOTE 1: This equipment has been tested and found to comply with the limits for a Class B digital device, pursuant to part 15 of the FCC Rules. These limits are designed to provide reasonable protection against harmful interference in a residential installation. This equipment generates, uses and can radiate radio frequency energy and, if not installed and used in accordance with the instructions, may cause harmful interference to radio communications. However, there is no guarantee that interference will not occur in a particular installation. If this equipment does cause harmful interference to radio or television reception, which can be determined by turning the equipment off and on, the user is encouraged to try to correct the interference by one or more of the following measures:

- Reorient or relocate the receiving antenna.
- Increase the separation between the equipment and receiver.
- Connect the equipment into an outlet on a circuit different from that to which the receiver is connected.
- Consult the dealer or an experienced radio/TV technician for help.

NOTE 2: Any changes or modifications to this unit not expressly approved by the party responsible for compliance could void the user's authority to operate the equipment.