

SC 630 | SC 632
SC 660 | SC 662

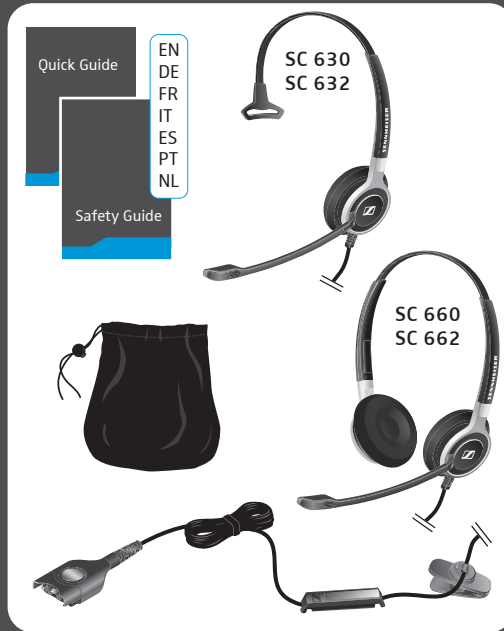


Quick Guide
Kurzanleitung
Guide rapide
Guida rapida

Instrucciones resumidas
Guida rápido
Beknopte handleiding



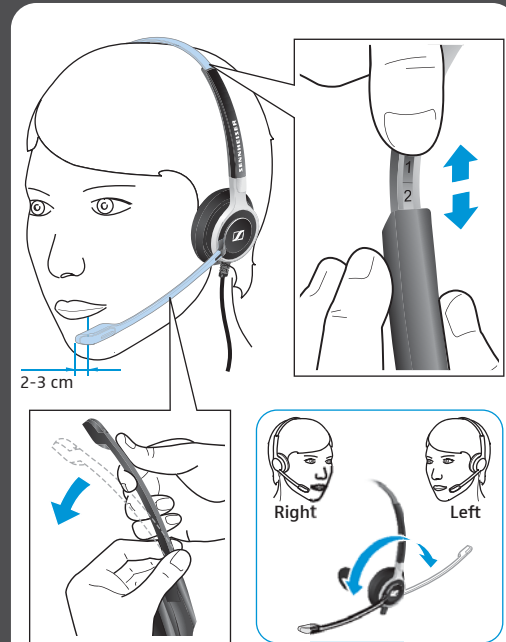
Delivery includes | Lieferumfang | Contenu |
Dotazione | Volumen de suministro | Material
fornecido | Omvang levering



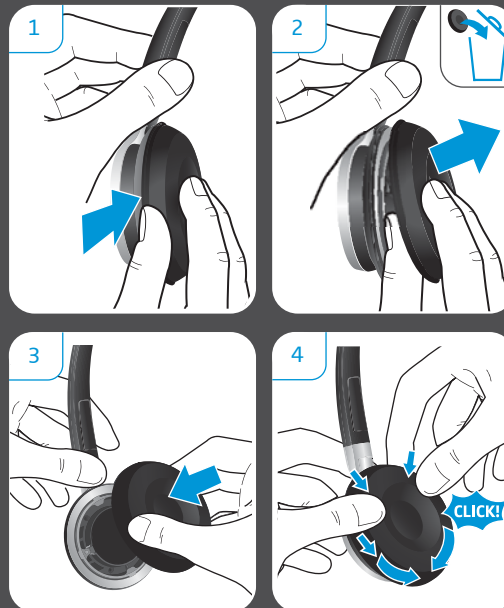
Connection possibilities | Anschlussmöglichkeiten |
Possibilités de raccordement | Possibilità di collega-
mento | Posibilidades de conexión | Ligações possíveis |
Aansluitmogelijkheden



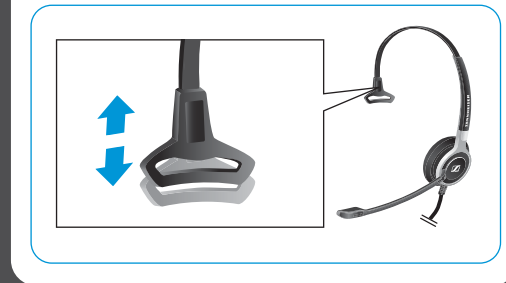
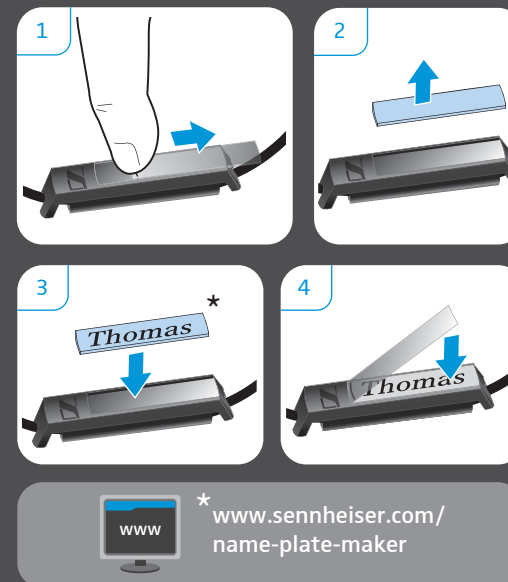
Wearing the headset | Headset aufsetzen | Mettre
le casque-micro | Indossare l'headset | Ponerse el
headset | Colocar o micro-auscultador | Headset
opzetten



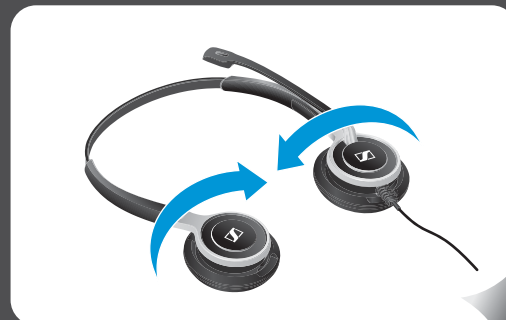
Replacing the ear pad | Ohrpolster austauschen |
Remplacer le coussinet d'oreille | Sostituzione dei
cuscinetti auricolari | Cambiar las almohadillas |
Substituir as almofadas | Oorkussen vervangen



Labeling the headset | Headset kennzeichnen |
Marquer le casque-micro | Riconoscimento dell'headset |
Marcar los auriculares con un nombre | Identificar
o micro-auscultador | Headset markeren



Transporting the headset | Headset transportieren |
Transporter le casque-micro | Trasporto dell'headset |
Transportar el headset | Transportar os
micro-auscultadores | De headset transporteren



www.sennheiser.com/cco/support



Sennheiser Communications A/S
Industriparken 27, DK-2750 Ballerup, Denmark
www.sennheiser.com

Printed in China, Publ. 05/14, A03

* [www.sennheiser.com/
name-plate-maker](http://www.sennheiser.com/name-plate-maker)

SC 630 | SC 632
SC 660 | SC 662

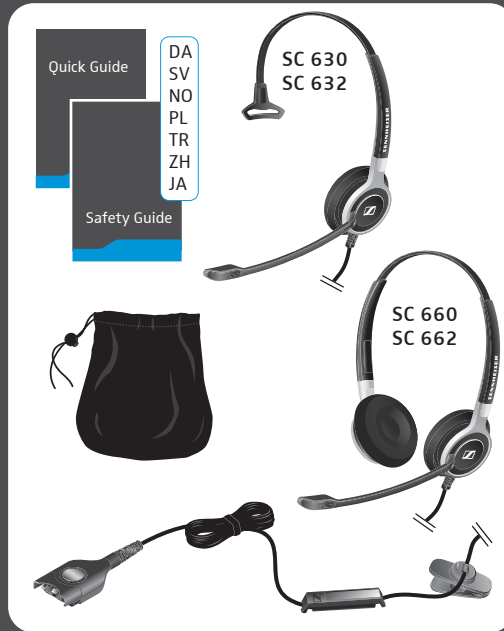


Quick Guide
Snabbguide
Quick Guide
Krótka instrukcja
obsługi

Hızlı Kılavuz
快速指南
クイックガイド



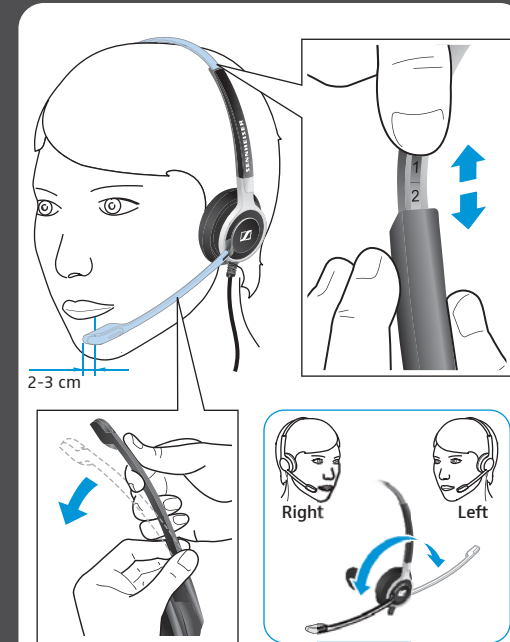
Leveringsomfang | Medföljande delar | Leveranse-
omfang | Zakres dostawy | Teslimat Kapsamı |
供货范围 | 同梱されているもの



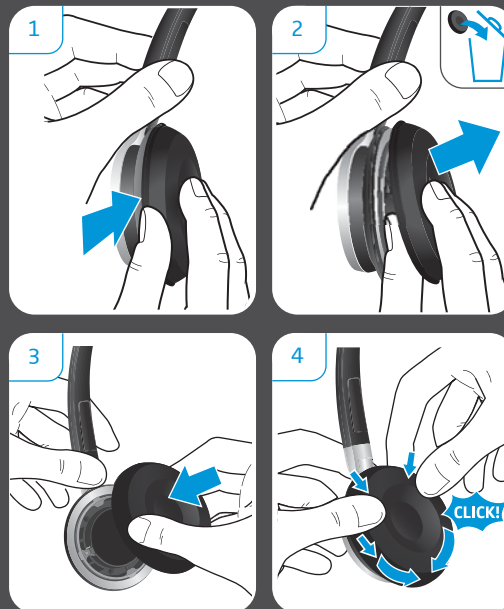
Tilslutningsmuligheder | Anslutning |
Tilkoblingsmuligheter | Możliwości podłączenia |
Bağlantı olanakları | 连通度 | 接続可能性



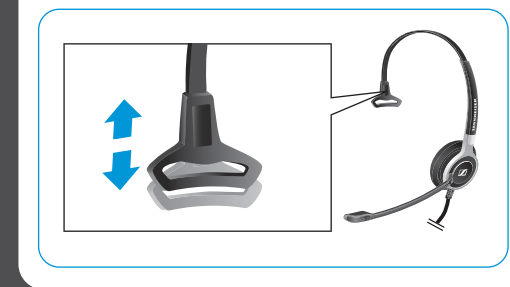
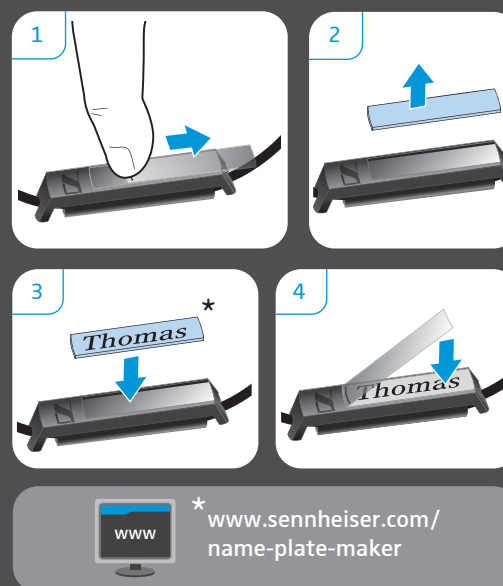
Brug af hovedsæt | Ta på headsetet | Sette på
hodesettet | Zakładanie zestawu słuchawkowego |
Kulaklığın takılması | 戴上耳机 | ヘッドセットを装
着する



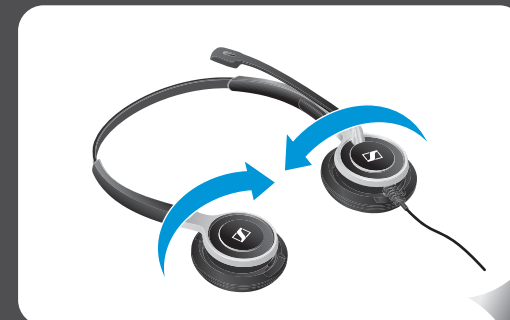
Udskiftning af ørepolstringer | Byta öronkuddar | Skifte
ut øreputene | Wymiana poduszek słuchawkowych |
Kulak yastığının değiştirilmesi | 更换耳垫 | イヤーパッド
を交換する



Identificering af hovedsættet | Märk headsetet |
Merke hodesettet | Oznakowanie zestawu słuchawko-
wego | Bağlantı olanakları |
标记通讯耳机 | ヘッドセットにラベルを付ける



Transport af headset | Transportera headset |
Transportere hodesettet | Transport zestawu
słuchawkowego | Kulaklık setini taşıma |
携帯耳机 | ヘッドセット輸送時



www.sennheiser.com/cco/support



Sennheiser Communications A/S

Industriparken 27, DK-2750 Ballerup, Denmark
www.sennheiser.com

Printed in China, Publ. 05/14, A03



* [www.sennheiser.com/
name-plate-maker](http://www.sennheiser.com/name-plate-maker)