



SENNHEISER

# UI 20 BL USB

USB Busy light with ringer



- |                     |                                |                        |
|---------------------|--------------------------------|------------------------|
| EN Quick Guide      | EL Γρήγορος οδηγός             | RU Краткое руководство |
| DE Kurzanleitung    | DA Kvikvejledning              | ZH 快速入门指南              |
| FR Guide express    | SV Snabbguide                  | TW 快速指南                |
| IT Guida rapida     | FI Pikaopas                    | TR Hızlı Kılavuz       |
| ES Guía rápida      | PL Skrócona instrukcja obsługi | JA クイックガイド             |
| PT Guia Rápido      | ID Panduan Cepat               | KO 빠른 가이드              |
| NL Mini handleiding |                                |                        |

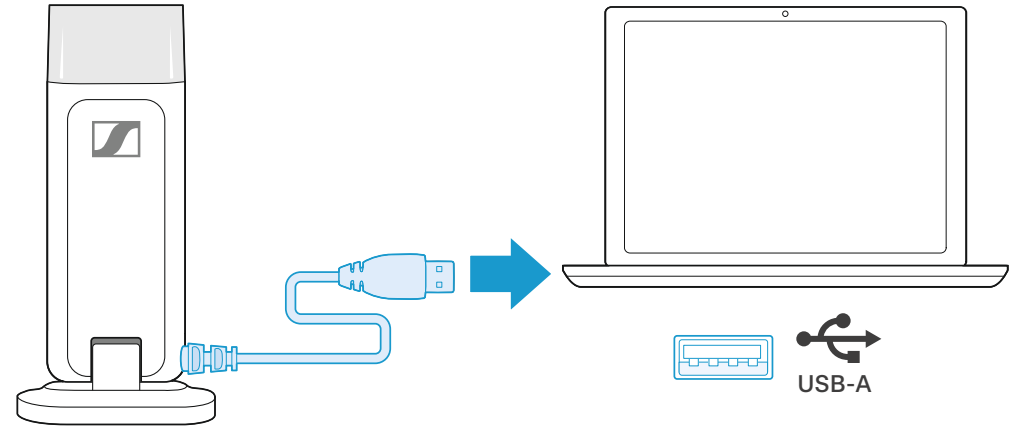
Installing the Busy light | Busy light installieren | Installer le voyant occupé (Busy light) | Installazione della Busy light | Instalación de la luz de aviso Busy light | Instalação da Luz de Ocupado | Installatie van het bezetlampje | Εγκατάσταση του Busy light | Installering af Busy light | Installera Busy light | Merkivalon asennus | Instalowanie lampki zajętości | Установка индикатора занятого состояния | 安裝忙碌指示燈 | 安裝忙碌指示燈 | Meşgul lambasının kurulumu | ビジーランプの設置 | Menginstal Busy light | Busy light 설치

**1** Download and install the free HeadSetup™ Pro software on your computer.



Connecting the Busy light | Busy light anschließen | Connecter la Busy light | Connessione della Busy light | Conexión de Busy light | Ligar o Busy light | De Busy light aansluiten | Συνδεση του Busy light | Tilslutning af Busy light | Ansluta Busy light | Busy light in kytkeminen | Podłączenie diody zajętości | Подключение Busy light | 连接忙碌指示燈 | 連接忙碌指示燈 | Meşgul ışığı birimini bağlama | Busy light の接続 | Menghubungkan Busy light | Busy light 연결

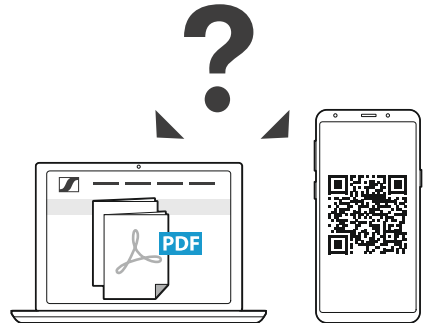
**2**



Detailed information | Ausführliche Informationen | Informations détaillées | Informazioni dettagliate | Informació detallada | Informação detalhada | Gedetailleerde informatie | Λεπτομερείς πληροφορίες | Detaljeret information | Detaljerad information | Yksityiskohtaiset tiedot | Szczegółowe informacje | Подробная информация | 詳細信息 | 詳細資訊 | Ayrintılı bilgi | 詳細情報 | Informasi terperinci | 상세 정보

Changing settings | Einstellungen ändern | Modification des paramètres | Modifica delle impostazioni | Modificar los ajustes | Alterar definições | Instellingen wijzigen | Αλλαγή ρυθμίσεων | Ændring af indstillinger | Ändra inställningar | Muuta asetuksia | Zmiana ustawień | Изменение настроек | 更改设置 | 變更設定 | Ayarların değiştirilmesi | 設定の変更 | Mengubah pengaturan | 설정 변경

Package contents | Lieferumfang | Contenu de la boîte | Contenuti della confezione | Contenido del embalaje | Conteúdo da embalagem | Inhoud verpakking | Περιεχόμενα συσκευασίας | Pakkens indhold | Innehåll i förpackningen | Pakkauksen sisältö | Zawartość opakowania | Содержимое упаковки | 套裝內容 | 包裝內容 | Kutunun içeriği | パッケージ内容 | Isi kemasan | 패키지 내용

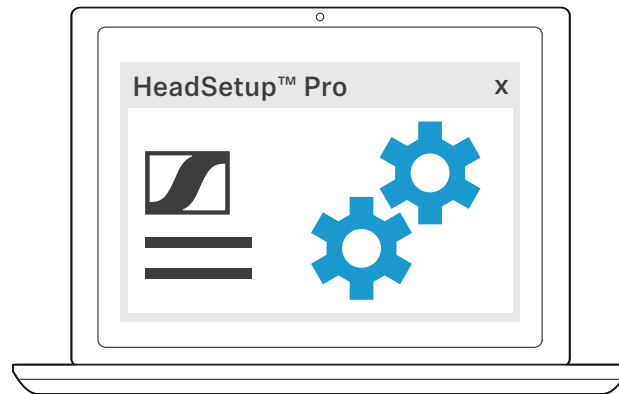


[www.sennheiser.com/support-me](http://www.sennheiser.com/support-me)

## Sennheiser Communications A/S

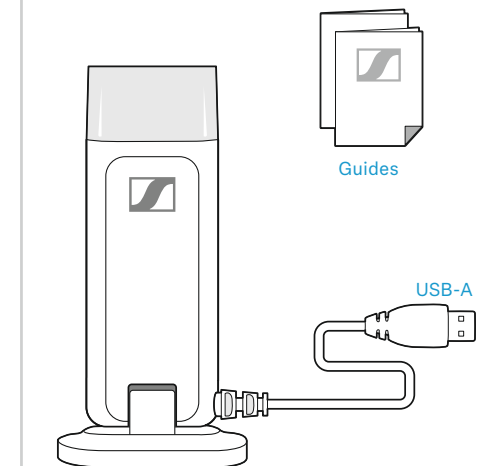
Industriparken 27, DK-2750 Ballerup, Denmark  
[www.sennheiser.com](http://www.sennheiser.com)

Printed in China, Publ. 08/18, 770-00175/A01

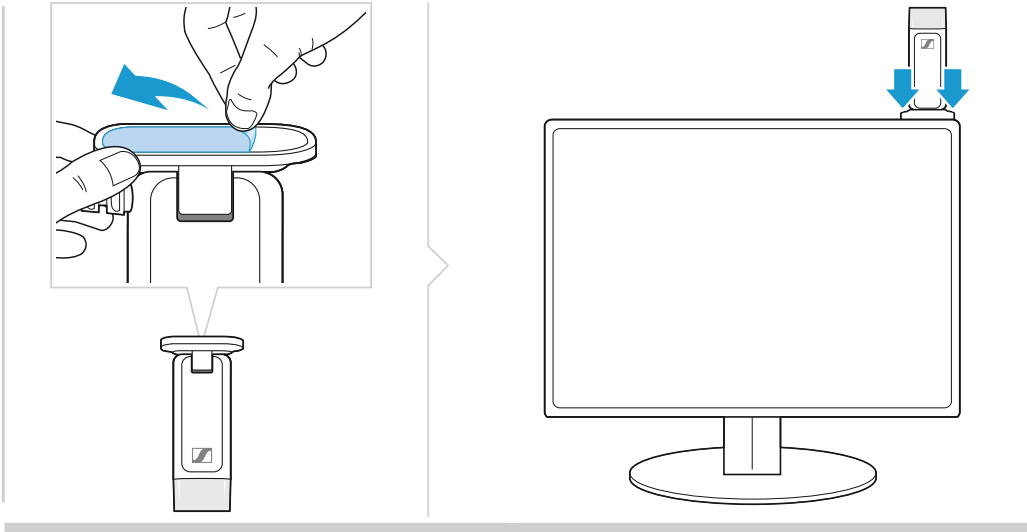


For manual configurations, open HeadSetup™ Pro settings. You can change for example:

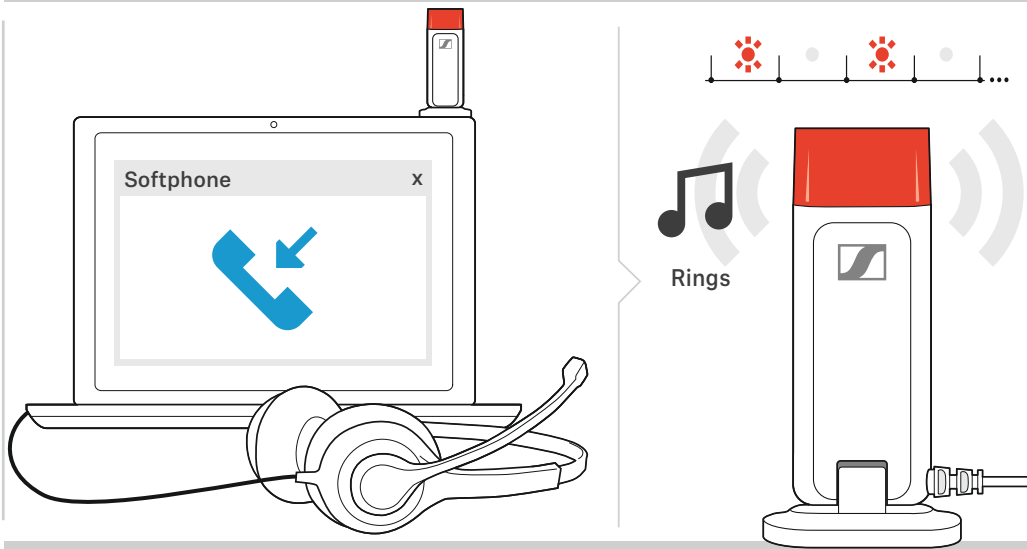
- Colors
- Brightness
- Ringtone
- Pattern
- Volume
- ON/OFF



**Mounting the Busy light to a desk or computer** | Busy light an einem Schreibtisch oder Computer befestigen | Monter la Busy light sur un bureau ou un ordinateur | Installazione della Busy light su una scrivania o un computer | Montaje de Busy light en un escritorio u ordenador | Montar o Busy light numa secretária ou computador | De Busy light bevestigen aan een bureau of computer | Τοποθέτηση του Busy light σε γραφείο ή υπολογιστή | Montering af Busy light på et skrivebord eller en computer | Montera Busy light på ett skrivbord eller en dator | Busy lightin asentaminen työpöydälle tai tietokoneeseen | Mocowanie diody zajętości do biurka lub komputera | Установка Busy light на столе или компьютере | 把忙碌指示灯固定到桌面或电脑上 | 將忙碌指示燈安裝於桌面或電腦上 | Meşgul ışığını masaya veya bilgisayara monte etme | デスクまたはコンピュータへの Busy light の取り付け | Memasang Busy light pada meja atau komputer | 책상 또는 컴퓨터에 Busy light 장착

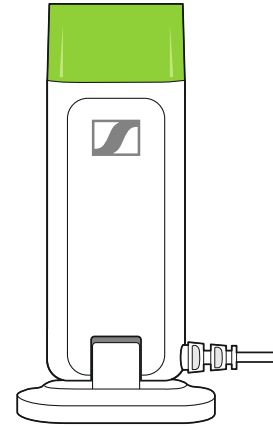


**Incoming call while not wearing the headset** | Eingehender Anruf während Sie das Headset nicht tragen | Appel entrant lorsque le micro-casque n'est pas porté | Chiamata in arrivo quando non si indossano le cuffie | Llamada entrante mientras no se utilizan los auriculares | Chamada recebida quando não está a usar os auscultadores | Inkomende oproep wanneer de headset niet wordt gedragen | Εισερχόμενη κλήση χωρίς να φοράτε το ακουστικό | Inkomende opkald mens man ikke har headset på | Inkommande samtal när headsetet inte bärs | Saaruva puhelu kun kuulokkeita ei käytetä | Połączenia przychodzące, gdy użytkownik nie nosi zestawu słuchawkowego | Входящий звонок при снятой гарнитуре | 来电且没有佩戴耳机时 | 未戴上耳機時來電 | Kulaklık takılı değilken gelen çağrı | ヘッドセット非装着時の着信 | Panggilan masuk saat tidak mengenakan headset | 헤드셋을 착용하지 않은 동안 걸려 오는 전화

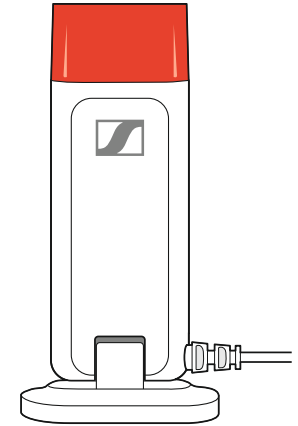


**Overview of the LED indications** | Übersicht der LED-Anzeigen | Aperçu des indications LED | Panoramica degli indicatori LED | Resumen de los indicadores LED | Vista geral das indicações LED | Overzicht van de indicatielampjes | Επισκόπηση των ενδείξεων LED | Oversigt over indikatorlampens signaler | Översikt av LED-belysningen | LED-merkivalojen yleiskatsaus | Przegląd stanów diody LED | Обзор светодиодных индикаторов | LED 显示内容概述 | LED 指示燈總覽 | LED göstergelere genel bakış | LED 表示の概要 | Gambaran umum tentang indikasi LED | LED 디스플레이 개관

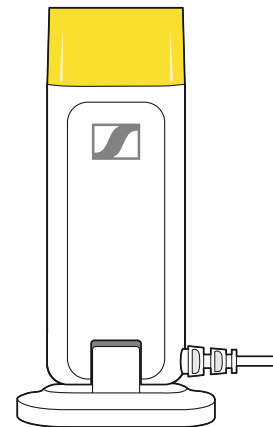
**AVAILABLE**



**BUSY / Do not disturb / In a call**



**AWAY**



**Missed call / IM notification**

