

Yealink CP960 Skype for Business Edition Release Notes of Version 8

Table of Contents

Yealink CP960 Skype for Business Edition Release Notes of Version 8	1
Yealink CP960 Skype for Business Edition Release Notes of Version 73.8.0.25	2
1. Introduction	2
2. New Features	2
3. Optimization.....	2
4. Bug Fixes.....	2
5. New Features Descriptions	2
6. Configuration Parameters Enhancements	6
7. Default Value Setting Changes	15

Yealink CP960 Skype for Business Edition Release Notes of Version 73.8.0.25

1. Introduction

- Firmware Version:
CP960: 73.8.0.17 upgrades to 73.8.0.25
- Applicable Models: CP960
- Release Date: Jul 3rd, 2018.

2. New Features

1. Added the feature of Better Together over Ethernet (BToE).
2. Added the feature of Connecting a PC Using a USB Cable.
3. Added the feature of Placing a Mobile Call over Bluetooth.
4. Supported Yealink CPW90 Wireless Microphone.
5. Added the feature of Audio Recording.
6. Added the feature of Music on Hold (MoH).
7. Added the feature that you can sign into your Skype for Business Online account using the Web Sign-In method.
8. Added the feature of Initiating a Conference Call on Behalf of a Boss.

3. Optimization

None

4. Bug Fixes

None

5. New Features Descriptions

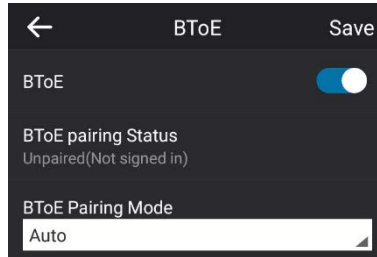
1. **Added the feature of Better Together over Ethernet (BToE).**

Description: Better Together over Ethernet (BToE) feature on Yealink CP960 Skype for Business phones enables you to control call from your phones and your computer using your Skype for Business client. You can also use BToE to sign into

your phone using your Skype for Business credentials. In order to use BToE, you need to download and install the Yealink BToE Connector application first.

To configure BToE feature via phone user interface:

Tap **More** -> **Features** -> **BToE**.



2. Added the feature of Connecting a PC Using a USB Cable.

Description: You can connect a PC to your Skype for Business phone using a USB cable. As a result, your phone acts as a speaker for calls or media played on your PC.

3. Added the feature of Placing a Mobile Call over Bluetooth.

Description: If you connect a Bluetooth-Enabled mobile phone with your Skype for Business phone, you can place a mobile call on your mobile phone or Skype for Business phone. The Skype for Business phone and mobile phone both show the active call. You can use the Skype for Business phone as a hands-free device for the call. You can use the Skype for Business phone to place both the mobile call and VoIP call, and two types of calls will not affect each other.

4. Added the feature of Audio Recording.

Description: If your phone is configured to enable audio recording feature, you can record local audio when the phone is idle or record active calls. You can record up to 12 hours in one file. By default, the recorded audios are saved in the internal SD card. You can also connect a USB flash drive to your phone, and choose to save the recorded audios to it instead of the internal SD card. You can play the recorded audios on either the phone itself or on a computer.

The parameters in the auto provision template are described as follows:

features.usb_call_recording.enable =
features.call_recording.enable =
features.call_recording.fast_entrance =

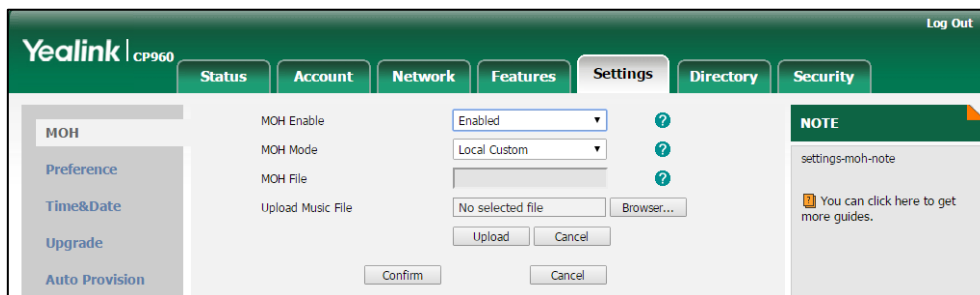
5. Added the feature of Music on Hold (MoH).

Description: Music on Hold (MoH) is the business practice of playing recorded music to fill the silence that would be heard by the party who has been placed on hold. When a call is placed on hold, the Skype for Business phone will play a music to the held party.

You can upload a custom music to the phone or use the music received from the Skype for Business server with the method of In-band provisioning.

To configure music on hold via web user interface:

Click **Settings** -> **MOH**.



6. Added the feature that you can sign into your Skype for Business Online account using the Web Sign-In method.

Description: You can sign into your Skype for Business Online account using the Web Sign-In method, which allows you to sign into the phone with your Skype for Business Online account using a web browser.

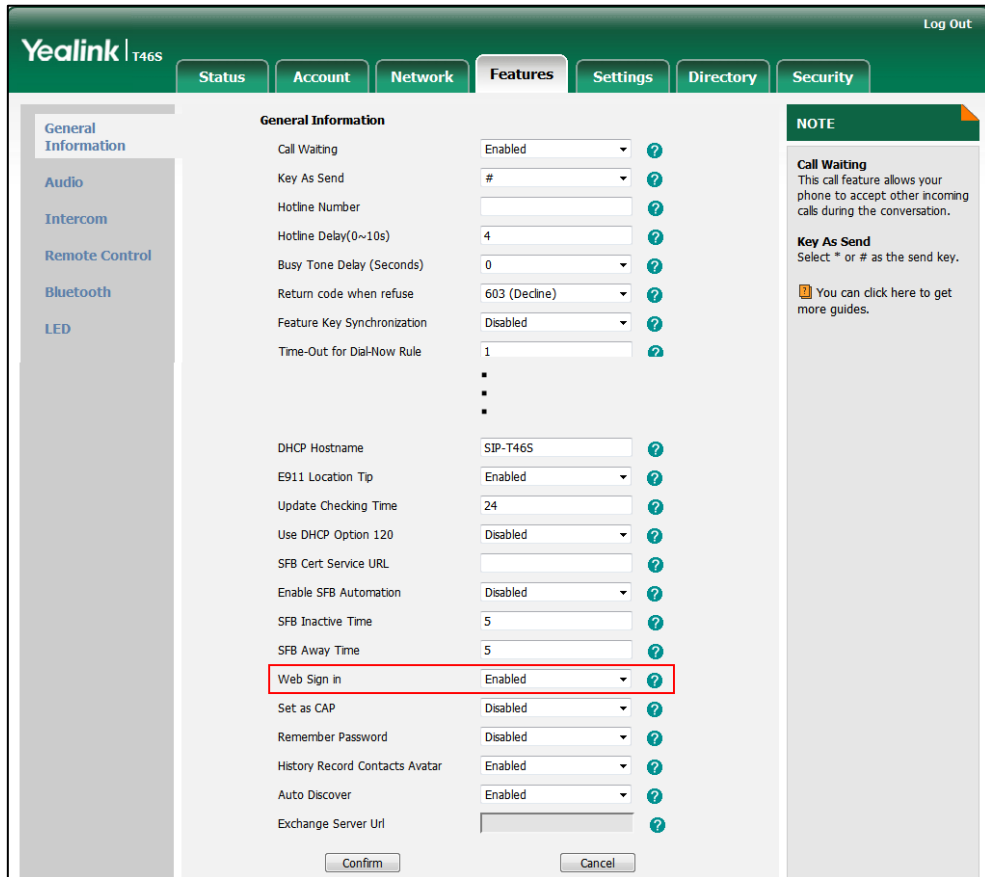
The parameters in the auto provision template are described as follows:

features.web_sign_in.enable =

features.device_pairing.url =

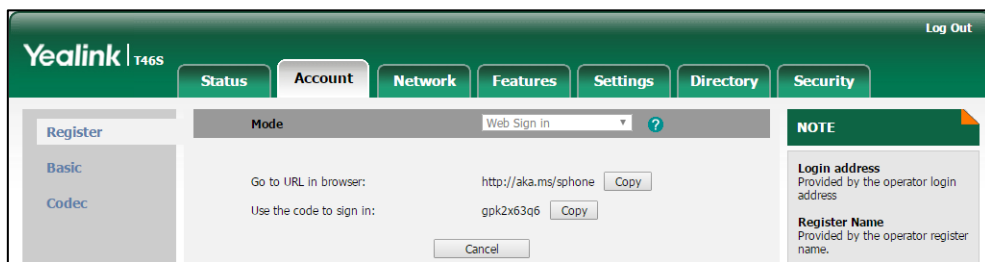
To enable the web sign-in via web user interface:

Click **Features** -> **General Information**.



To sign into the Skype for Business Server using Web Sign-In method via web user interface:

Click Account -> Register.

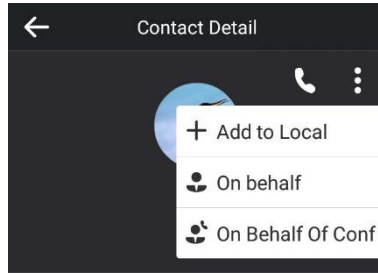


7. Added the feature of Initiating a Conference Call on Behalf of a Boss.

Description: The delegate can initiate a conference call on behalf of a boss.

To initiate a conference call on behalf of a boss's line:

Tap Contacts -> Bosses.



6. Configuration Parameters Enhancements

Auto Provision Template Flies Change Log							
Firmware Version: [73.8.0.17]-[73.8.0.25]							
Feature	Provisioning syntax Comparison		Permitted Values	Default Value	Action	Description	File
	73.8.0.17	73.8.0.25					
Account	static.account.1.sign_in.server_address =	account.sfb.1.server =	String within 128 characters	Blank	Change	It configures the sign-in address for the User Sign-in method. The value format is username@domain.com. Example: static.account.1.sign_in.server_address = 2216@yealinkuc.com	mac.cfg
Account	static.account.1.sign_in.user_name =	account.sfb.1.user_name =	String within 128 characters	Blank	Change	It configures the user name for the User Sign-in method. The value format is username@domain.com or username@domain, domain.com\username or domain\username. Example: static.account.1.sign_in.user_name= 2216@yealinkuc.com	mac.cfg
Account	static.account.1.sign_in.password =	account.sfb.1.password =	String within 128 characters	Blank	Change	It onfigures the password for the User Sign-in method.	mac.cfg
Account	static.account	account.sfb.	String within	Blank	Change	It configures the IP phone's	mac.cfg

	unt.1.sign_in.pin_number =	1.pin_number =	99 characters			extension for the PIN Authentication method.	
Account	static.account.1.sign_in.pin_password =	account.sfb.1.pin_password =	String within 99 characters	Blank	Change	It configures the PIN for the PIN Authentication method.	mac.cfg
Inband Provision	static.account.1.authentication_method =	account.sfb.1.authentication_method =	0, 1, 2, 4 or 8	2	Change	It configures the login authentication method. 0-enabled all supported authentication method 1-org-id authentication 2-OAuth authentication 4-NTLM authentication 8-device pairing authentication	mac.cfg
Login		features.sign_in_via_btoe.enable =	0 or 1	1	Add	It enables or disables the user to sign into the phone via PC. 0-Disabled 1-Enabled Note: If it is set to 1 (Enabled), make sure your phone has paired with the Skype for Business client using BToE software, so that you can sign into the phone via PC.	common.cfg
Sign Out		phone_setting.idle_sign_out.enable =	0 or 1	0	Add	It enables or disables the phone to sign out of Skype for Business Server from the idle screen. 0-Disabled 1-Enabled	common.cfg
RPS		redirect.enable =	0 or 1	1	Add	It enables or disables the Redirection and Provisioning Server (RPS) provisioning. 0-Disabled 1-Enabled	common.cfg

RPS		auto_provision.rps_highest_priority.enable =	0 or 1	0	Add	It enables or disables the Redirection and Provisioning Server (RPS) method to be the highest priority when provisioning the Skype for Business phone automatically. 0- the lowest priority 1-the highest priority	common.cfg
Inband		phone_setting.receive_inband.enable =	0 or 1	1	Add	It enables or disables the phone to accept the in-band provisioning device settings from the Skype for Business server. 0-Disabled 1-Enabled	common.cfg
Inband		auto_provision.custom_protect =	0 or 1	0	Add	It enables or disables the provisioning methods priority. 0-Disabled, different provisioning methods (central provisioning, in-band Provisioning and manual Provisioning) have no priority. The subsequent operations always override previous operations regardless of the provisioning method you are using. 1-Enabled, different provisioning methods have priority (phone/web user interface>in-band provisioning>central provisioning>factory defaults). Provision with high priority will not be overwritten by provision with low priority.	common.cfg
Syslog		phone_setting.logging_t	0 or 1	0	Add	It enables or disables the	common.cfg

		o_usb_drive.enable =				phone to record local log messages to the connected USB flash drive. 0-Disabled 1-Enabled	
Syslog		phone_setting.logging_t o_btoe.enable =	0 or 1	0	Add	It enables or disables the phone to upload syslog messages to the paired PC using the BToE software. The log files will be saved at the root directory of BToE on your computer. 0-Disabled 1-Enabled	common. cfg
Module Log Level Settings	syslog.directory_module.log_level =		Integer from 0 to 6	6	Delete	It configures the severity level of the directory logs.	common. cfg
Module Log Level Settings	syslog.account_module.log_level =		Integer from 0 to 6	6	Delete	It configures the severity level of the account logs.	common. cfg
Module Log Level Settings	syslog.dsskey_module.log_level =		Integer from 0 to 6	6	Delete	It configures the severity level of the DSSkey logs.	common. cfg
Module Log Level Settings	syslog.taskaction_module.log_level =		Integer from 0 to 6	6	Delete	It configures the severity level of the task action log.	common. cfg
Module Log Level Settings	syslog.setting_module.log_level =		Integer from 0 to 6	6	Delete	It configures the severity level of the setting module logs.	common. cfg
Module Log Level Settings	syslog.sfb_feature.log_level =		Integer from 0 to 6	3	Delete	It configures the severity level of the logs related to Skype for Business features.	common. cfg
Module Log Level Settings	syslog.register_loglevel =		Integer from 0 to 6	3	Delete	It configures the severity level of the register log.	common. cfg
Module Log Level Settings	syslog.subscribe_loglevel =		Integer from 0 to 6	3	Delete	It configures the severity level of the subscribe log.	common. cfg

Module Log Level Settings	syslog.call_loglevel =		Integer from 0 to 6	3	Delete	It configures the severity level of the logs related to calling feature.	common.cfg
Module Log Level Settings	syslog.ice_loglevel =		Integer from 0 to 6	3	Delete	It configures the severity level of the ICE log.	common.cfg
Module Log Level Settings	syslog.exchange_loglevel =		Integer from 0 to 6	3	Delete	It configures the severity level of the Exchange log.	common.cfg
Phone Lock	sfb.phone_lock.time_out =	phone_setting.phone_lock.lock_time_out =	Integer from 1 to 1440	10	Change	It configures the time (in minutes) the phone can be idle before it automatically locks.	common.cfg
BToE		sip.btoe.enable =	0 or 1	For T48S/T46S/T42S/T41S Skype for Business phones: 1 For CP960 Skype for Business phones: 0	Add	It enables or disables the BToE (Better Together over Ethernet) feature. 0-Disabled 1-Enabled If it is set to 0 (Disabled), BToE is disabled on the phone. Your phone cannot pair with Skype for Business Client.	common.cfg
BToE		sip.btoe.pairing_mode =	0 or 1	0	Add	It configures the BToE pairing mode. 0-Auto 1-Manual If it is set to 0 (Auto), you can pair your phone and PC without a pairing code. If it is set to 1 (Manual), your phone will generate a pairing code when pairing with PC. You need to enter the pairing code on your BToE software to manually to pair your phone and PC.	common.cfg

						Note: It works only if the value of the parameter "sip.btoe.enable" is set to 1 (Enabled).	
BToE		sip.btoe.transport_security.enable =	0 or 1	1	Add	It enables or disables the encryption transmission between the Skype for Business phone and connected computer when BToE (Better Together over Ethernet) feature is enabled. 0-TCP 1-TLS encryption	common.cfg
BToE		sip.btoe.as_audio_device.enable =	0 or 1	0	Add	It enables or disables the Skype for Business phone to be used as an audio device when BToE (Better Together over Ethernet) is enabled in the VDI (Virtual Desktop Infrastructure) environment. 0-Disabled 1-Enabled Note: We recommend that you set the value of this parameter to be 1 (Enabled) if you want to use BToE in the VDI environment.	common.cfg
MOH		sfb.music_on_hold.mode =	0 or 1	1	Add	It configures the source of the music played for the held party. 0-Inband Provision 1-Local Custom If it is set to 1 (Enabled), your phone will play the music received from the Skype for Business Server (via Inband provisioning method) to the held party. If it is set to 0 (Disabled), your phone will play the custom music to the held	common.cfg

						party. Note: It works only if the value of the parameter "sfb.music_on_hold.enable" is set to 1 (Enabled).	
MOH		sfb.music_on_hold.url =	URL within 512 characters	Blank	Add	It configures the access URL of the custom music file. Example: sfb.music_on_hold.url = tftp://192.168.1.100/Customring.wav Note: It works only if the values of the parameter "sfb.music_on_hold.enable" and parameter "sfb.music_on_hold.mode" are set to 1.	common.cfg
MOH		sfb.music_on_hold.delete =	URL within 512 characters	Blank	Add	Delete all custom music files. Example: sfb.music_on_hold.delete = http://localhost/all	common.cfg
MOH		sfb.music_on_hold.enable =	0 or 1	0	Add	It enables or disables the Music On Hold feature when placing an active call on hold. 0-Disabled 1-Enabled If it is set to 1 (Enabled), the Skype for Business phone will play built-in music when placing an active call on hold.	common.cfg
Autop Code		static.autoprovision.X.name =	String within 64 characters	Blank	Add	It configures the code name to trigger auto provisioning.	common.cfg
Autop Code		static.autoprovision.X.code =	String	Blank	Add	It configures the activation code to trigger auto provisioning. The activation code can be numeric characters, special characters # * or a	common.cfg

						<p>combination of them.</p> <p>Example:</p> <pre>static.autoprovision.1.code = 123 static.autoprovision.2.code = ** static.autoprovision.3.code = *123</pre>	
Autop Code		static.autoprovision.X.url =	URL within 511 characters	Blank	Add	It configures the access URL of the provisioning server for the Skype for Business phone to perform auto provisioning which is triggered by activation code.	common.cfg
Autop Code		static.autoprovision.X.user =	String within 64 characters	Blank	Add	It configures the user name for authentication during auto provisioning which is triggered by activation code.	common.cfg
Autop Code		static.autoprovision.X.password =	String within 32 characters	Blank	Add	It configures the password for authentication during auto provisioning which is triggered by activation code.	common.cfg
Autop Code		static.autoprovision.X.common_aes =	16 characters	Blank	Add	<p>It configures the plaintext AES key for decrypting the Common CFG file.</p> <p>If it is configured, it has a higher priority than the value configured in the parameter "static.auto_provision.aes_key_16.com".</p>	common.cfg
Autop Code		static.autoprovision.X.mac_aes =	16 characters	Blank	Add	<p>It configures the plaintext AES key for decrypting the MAC-Oriented CFG file.</p> <p>If it is configured, it has a higher priority than the value configured in the parameter "static.auto_provision.aes_key_16.mac".</p>	common.cfg

Features_ Bluetooth		features.bluetooth_enable =	0 or 1	0	Add	It triggers the Bluetooth feature to on or off. 0-Off 1-On	common.cfg
Features_ Bluetooth		features.bluetooth_adapter_name =	String within 64 characters	For CP960 Skype for Business phones: The default value is Yealink-CP960. For T48S Skype for Business phones: The default value is Yealink T48S. For T46S Skype for Business phones: The default value is Yealink T46S.	Add	It configures the Bluetooth device name. Note: It works only if the value of the parameter "features.bluetooth_enable" is set to 1 (On).	common.cfg
Features_ Bluetooth		bluetooth.a2dp_sink =	0, 1 or 2	0	Add	It enables or disables the phone to display the Media audio option for the connected Bluetooth device. 0-Disabled 1-Enabled, the phone displays the Media audio option, but this option is disabled. 2-Enabled, the phone	common.cfg

						displays the Media audio option, and this option is enabled.	
Features_ Bluetooth		features.bluetooth.fast_entrance =	0 or 1	0	Add	It enables or disables the phone to display a Bluetooth menu on the idle screen. 0-Disabled 1-Enabled	common.cfg
Record		features.call_recording.enable =	0 or 1	0	Add	It enables or disables the call recording feature for the phone. 0-Disabled 1-Enabled, you can use recording feature.	common.cfg
Record		features.call_recording.fast_entrance =	0 or 1	0	Add	It enables or disables the phone to display a Recording menu on the idle screen. 0-Disabled 1-Enabled	common.cfg

7. Default Value Setting Changes

Default Value Factory Setting Change Log			
Features	Description	Default Value of Factory Setting	
		73.8.0.17	73.8.0.25
Phone Lock	It enables or disables the phone to display the phone lock configuration. 0-Disabled 1-Enabled	phone_setting.phone_lock.enable = 1	phone_setting.phone_lock.enable = 0
CAP	It enables or disables the phone to use the voice mail feature. 0-Disabled 1-Enabled	features.voice_mail.enable = For individual phone: 1 For Common Area Phone: 0	features.voice_mail.enable = For T48S/T46S/T42S/T41S Skype for Business phone: 1 For CP960 Skype for Business phone: 0

			For Common Area Phone: 0
--	--	--	-----------------------------