



SENNHEISER

UI 10 BL

Busy light
2.5 mm
jack plug

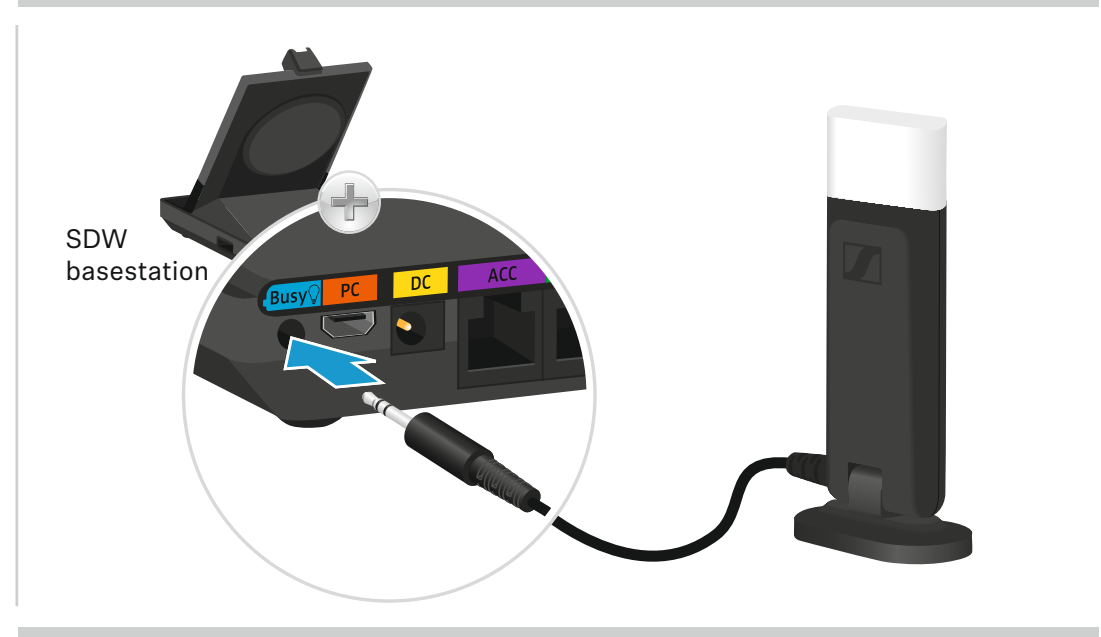


EN Quick Guide
DE Kurzanleitung
FR Guide express
IT Guida rapida
ES Guía rápida

PT Guia Rápido
NL Mini handleiding
EL Σύντομες οδηγίες
DA Kvikvejledning

Package contents | Lieferumfang | Contenu de la boîte |
Contenuti della confezione | Contenido del embalaje |
Conteúdo da embalagem | Inhoud verpakking | Περιεχόμενα
συσκευασίας | Pakkens indhold

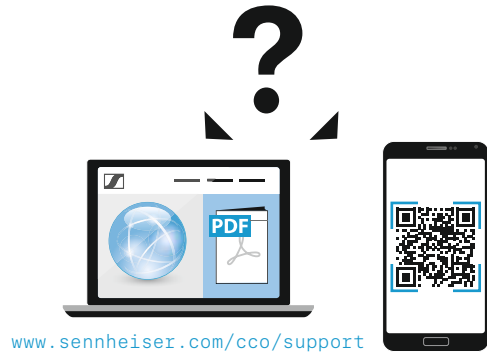
Connecting the Busy light | Busy light anschließen | Connecter la Busy light | Connessione alla Busy light |
Conexión de Busy light | Ligar o Busy light | De Busy light aansluiten | Σύνδεση του Busy light | Tilslutning af Busy light



Detailed information | Ausführliche Informationen |
Informations détaillées | Informazioni dettagliate |
Información detallada | Informação detalhada |
Gedetailleerde informatie | Λεπτομερείς πληροφορίες |
Detaljeret information

Mounting the Busy light to a desk or computer | Busy light an einem Schreibtisch oder Computer befestigen |
Monter la Busy light sur un bureau ou un ordinateur | Installazione della Busy light su una scrivania o un computer |
Montaje de Busy light en un escritorio u ordenador | Montar o Busy light numa secretária ou computador |
De Busy light bevestigen aan een bureau of computer | Τοποθέτηση του Busy light σε γραφείο ή υπολογιστή |
Montering af Busy light på et skrivebord eller en computer

Overview of the LED indications | Übersicht der LED-Anzeigen |
Aperçu des indications LED | Panoramica degli indicatori LED |
Resumen de los indicadores LED | Vista geral das indicações
LED | Overzicht van de indicatielampjes | Επισκόπηση των
ενδείξεων LED | Oversigt over indikatorlampens signaler

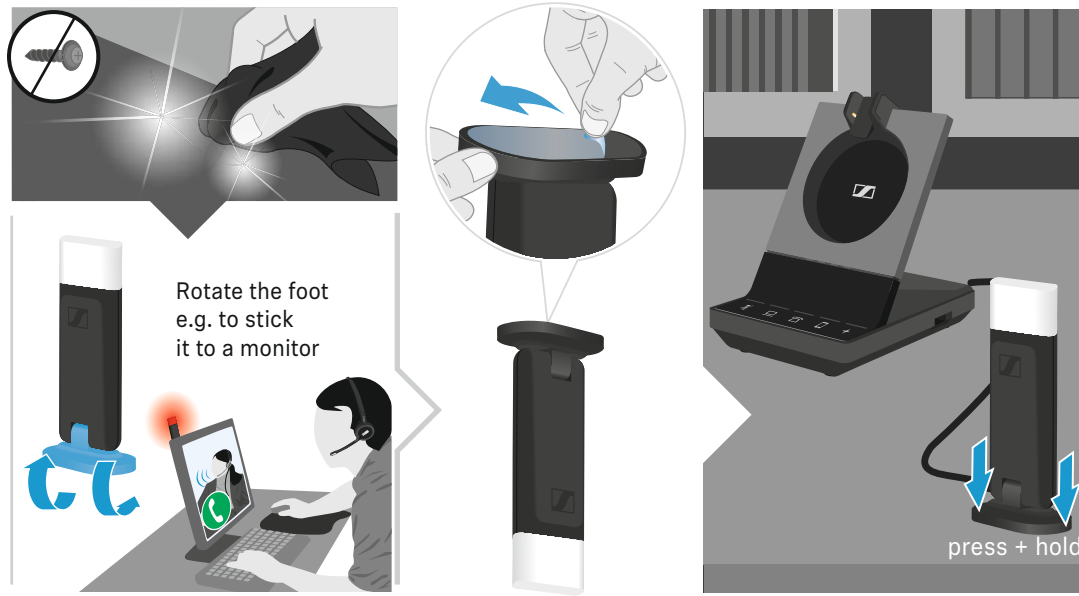


www.sennheiser.com/cco/support

Sennheiser Communications A/S

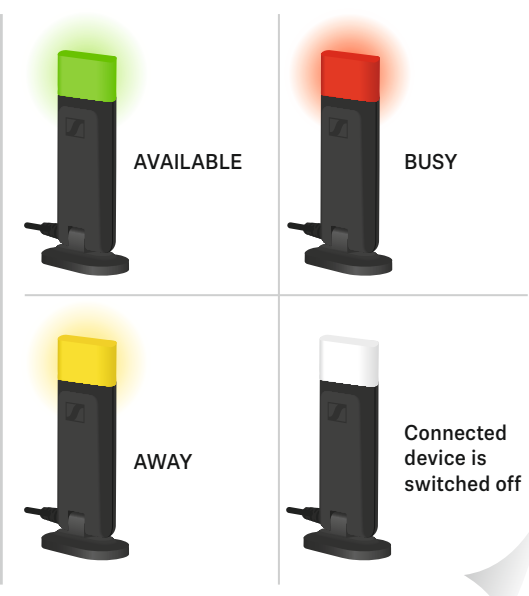
Industriparken 27, DK-2750 Ballerup, Denmark
www.sennheiser.com

Printed in China, Publ. 07/17, 770-00133/A01



Rotate the foot
e.g. to stick
it to a monitor

press + hold





SENNHEISER

Innehåll i förpackningen | Pakkauksen sisältö | Zawartość opakowania | Содержимое упаковки | Kutunun içeriği | パッケージ内容 | Isi kemasan

Ansluta Busy light | Busy light in kytkeminen | Podłączenie diody zajętości | Подключение Busy light | Meşgul ışığı birimini bağlama | Busy light の接続 | Menghubungkan Busy light

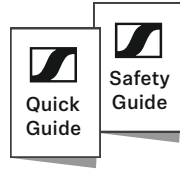
UI 10 BL

Busy light
2.5 mm
jack plug

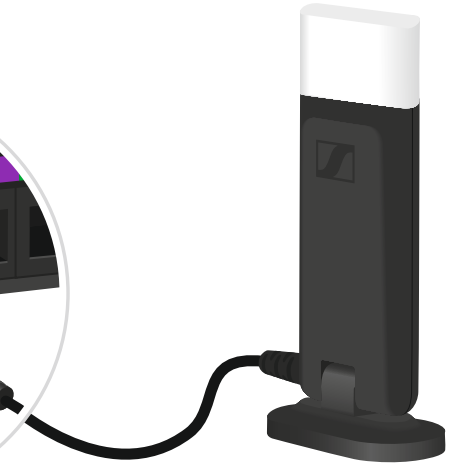
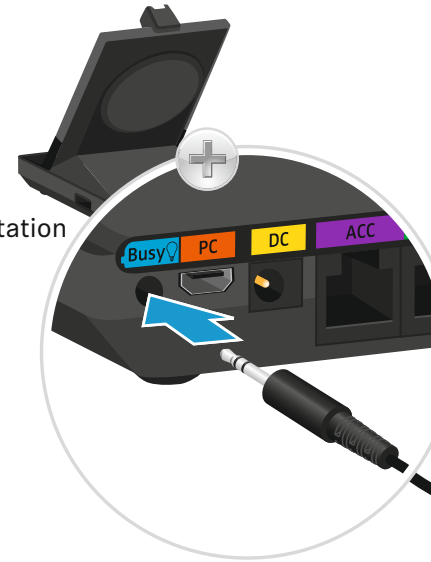


SV Snabbguide
FI Pikaopas
PL Skrócona instrukcja obsługi

RU Краткое руководство
TR Hızlı Kılavuz
JA クイックガイド
ID Panduan Cepat



SDW basestation



Detaljerad information | Yksityiskohtaiset tiedot | Szczegółowe informacje | Подробная информация | Ayrıntılı bilgi | 詳細情報 | Informasi terperinci

Montera Busy light på ett skrivbord eller en dator | Busy lightin asentaminen työpöydälle tai tietokoneeseen | Mocowanie diody zajętości do biurka lub komputera | Установка Busy light на столе или компьютере | Meşgul ışığını masaya veya bilgisayara monte etme | デスクまたはコンピュータへの Busy light の取り付け | Memasang Busy light pada meja atau komputer

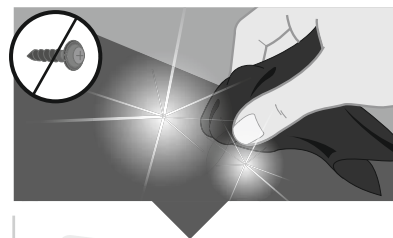
Översikt av LED-belysningen | LED-merkivalojen yleiskatsaus | Przegląd stanów diody LED | Обзор светодиодных индикаторов | LED göstergelere genel bakış | LED 表示の概要 | Gambaran umum tentang indikasi LED



www.sennheiser.com/cco/support

Sennheiser Communications A/S
Industriparken 27, DK-2750 Ballerup, Denmark
www.sennheiser.com

Printed in China, Publ. 07/17, 770-00133/A01



Rotate the foot
e.g. to stick
it to a monitor

