



OPERATING MANUAL



TURNTABLE
MODEL: GPO JAM

Please read carefully this manual and keep it for future reference.

CONTENT

IMPORTANT SAFETY INSTRUCTIONS FOR AUDIO PRODUCTS - READ THROUGH	1
PRECAUTIONS	3
BEFORE USE.....	4
HOW TO REPLACE THE TURNTABLE STYLUS (NEEDLE).....	4
LAYOUTS.....	4
PART I: MAIN FUNCTION	5
LINE OUT	5
PHONOGRAPH.....	5
PART II: AUDACITY SOFTWARE	6
AUDACITY INSTALLATION AND USB CONNECTION.....	6
AUDACITY FOR WINDOWS	6
CONFIGURING AUDACITY FOR MICROSOFT WINDOWS	10
TROUBLESHOOTING GUIDE.....	16
SPECIFICATION	18

Important Safety Instructions for Audio Products - Read Through

When using electrical products, basic precautions should always be followed including:

1. **Read Instructions** - All the safety and operating instructions should be read before the product is operated.
2. **Retain Instructions** - The safety and operating instructions should be retained for future reference.
3. **Heed Instructions** - All warnings on the product and in the operating instructions should be adhered to
4. **Follow Instructions** - All operating and user instructions should be followed.
5. **Cleaning** - Unplug this product from the wall outlet before cleaning. Do not use liquid cleaners or aerosol cleaners. Use a damp cloth for cleaning.
6. **Attachments** - Do not use attachments not recommended by the product manufacturer as they may cause hazards.
7. **Water and Moisture** - Do not use this product near water-for example, near a bath tub, wash bowl, kitchen sink, or laundry tub, in a wet basement, or near a swimming pool, etc.
8. **Accessories** - Do not place this product on an unstable surface. The product may fall, causing serious injury to a child or adult and serious damage to the product. Use only with a stand, bracket, or table recommended by the manufacturer, or sold with the product. Any mounting of the product should follow the manufacturer's instructions, and should use a mounting accessory recommended by the manufacturer.
9. **Transporting** - This product should be moved with care to avoid damage or injury.
10. **Ventilation** - Slots and openings in the cabinet are provided for ventilation, to ensure reliable operation of the product and to protect it



from overheating. These openings must not be blocked or covered. The openings should never be blocked by placing the product on a bed, sofa, rug, or similar surface. This product should not be placed in a built-in installation such as a bookcase or rack unless proper ventilation is provided or the manufacturer's instructions have been adhered to.

11. **Power Sources** - This product should be operated only from the type of power source indicated on the marking label. If you are not sure of the type of power supply to your home, consult your product dealer or local power company. For products intended to operate from battery power, or other sources, refer to the operation instructions.

12. **Main Plug** - The main plug is used as the disconnect device, the disconnect device shall remain readily accessible.

13. **Power - Cord Protection** - Power-supply cords should be routed so that they are not likely to be trapped in any way.

14. **Lightning** - For added protection for this product during a lightning storm, or when it is left unattended and unused for long periods of time, unplug it from the wall outlet and disconnect the antenna or cable system. This will prevent damage to the product due to lightning and power-line surges.

15. **Power Lines** - An outside antenna system should not be located in the vicinity of overhead power lines or other electric light or power circuits, or where it can fall into such power lines or circuits. When installing an outside antenna system, extreme care should be taken to keep from touching such power lines or circuits as contact with them might be fatal.

16. **Overloading** - Do not overload wall outlets, extension cords, or integral convenience receptacles as this can result in a risk of fire or electric shock.

17. **Object and Liquid Entry** - Never push objects of any kind into this product through openings as they may touch dangerous voltage points or short-out parts that could result in a fire or electric shock. The apparatus shall not be exposed to dripping or splashing, and no object filled with liquids such as a vase of flowers, shall be placed on the apparatus.

18. **Servicing** - Do not attempt to service this product yourself as opening or removing covers may expose you to dangerous voltage or other hazards. Refer all servicing to qualified service personnel.

19. **Damage Requiring Service** - Unplug this product from the wall outlet and refer servicing to qualified service personnel under the following conditions:

- a. If the power-supply cord or plug is damaged.
- b. If liquid has spilled, or objects have fallen into the product.
- c. If the product has been exposed to rain or water.
- d. If the product does not operate normally by following the operating instructions. Adjust only those controls that are covered by the operating instructions, as an improper adjustment of other controls may result in damage and will often require extensive work by a qualified technician to restore the product to its normal operation.
- e. If the product has been dropped or damaged in any way, and the product exhibits a distinct change in performance-this indicates a need for service.

20. **Replacement Parts** - When replacement parts are required, be sure the service technician has used replacement parts specified by the manufacturer or have the same characteristics as the original part. Unauthorized substitutions may result in fire, electric shock, or other hazards.

21. **Safety Check** - Upon completion of any service or repairs to this product, ask the service technician to perform safety checks to determine that the product is in proper operating condition.

22. **Heat** - The product should be situated away from heat sources such as radiators, heat registers, stoves or other products (including amplifiers) that produce heat.

Precautions

Safety Information-caution:

1. In order to shut off the power of this product completely, unplug the power cord from the wall outlet. Be sure to unplug the unit if you do not intend to use it for an extended period of time, such as on a vacation.
2. Use of controls, adjustments and performance of procedures other than those specified herein may result in hazardous radiation exposure.
3. To prevent electric shock, match wide blade of plug to wide slot, fully insert.
4. If this product develops trouble, contact qualified service centers, and do not use the product in defective states.

Safety Precautions

WARNING:

To reduce the risk of fire or electric shock, do not expose this appliance to rain or moisture.

CAUTION:

Use of controls or adjustments or performance of procedures other than those specified may result in hazardous radiation exposures.

CAUTION

RISK OF ELECTRIC SHOCKS - DO NOT OPEN!

To reduce the risk of electric shock, do not remove cover or back.

No user serviceable parts inside. Refer servicing to qualified service personnel.



The light flash with arrowhead symbol, within an equilateral triangle, is intended to alert user to the presence of non-insulated "dangerous voltage" within the product's enclosure that may be of sufficient magnitude to constitute risk of electric shock to persons.



The exclamation point within an equilateral triangle is intended to alert user to the presence of important operating and maintenance (servicing) instructions in the literature accompanying the appliance.

(See markings on the back of the unit.)

Before Use

1. Choose unit installation location carefully. Avoid placing it in direct sunlight or close to a source of heat. Also avoid locations subject to vibrations and excessive dust, cold or moisture. Keep away from sources that hum, such as transformers or motors.
2. Do not open the cabinet as this might result in damage to the circuitry or electrical shock, if a foreign object should get into the set, contact your dealer.
3. Be sure not to handle record with dirty fingers. Never play a record that has a crack on the surface.
4. When removing the power plug from the wall outlet, always pull directly on the plug, never pull the cord.
5. To protect the stylus, don't forget to put on the white protective needle cover after use.
6. Do not attempt to clean the unit with chemical solvents as this might damage the finish. Use a clean, dry cloth.
7. In order to shut off the power to this product completely, unplug the power cord from the wall outlet. Be sure to unplug the unit if you do not intend to use it for an extended period of time, such as a vacation.
8. Keep this manual in a safe place for future reference.

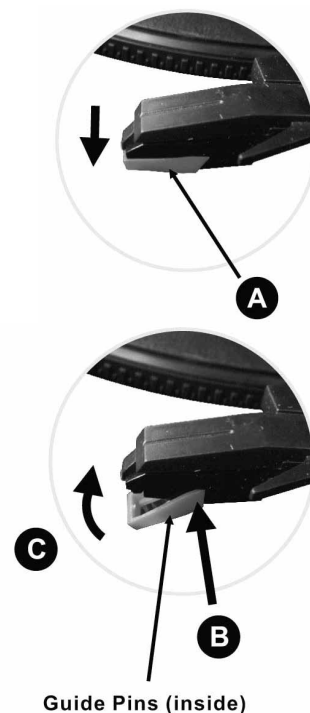
How to Replace the Turntable Stylus (Needle)

Removing old stylus

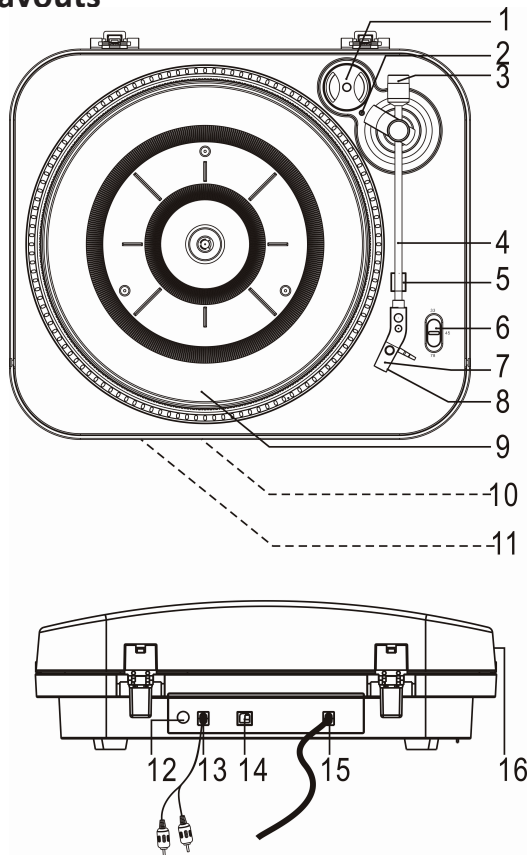
1. Set a screwdriver at the tip of the stylus and push down in the direction "A".
2. Remove the stylus by pulling it forward and down.

Installing a new stylus

1. Hold the tip of the stylus and insert the other edge by pressing in the direction "B".
2. Push up in the direction "C" until it locks at the tip.



LAYOUTS



1. 45 RPM ADAPTOR
2. TONE ARM CONTROL INDICATOR
3. DECORATION (NOT FOR ADJUSTMENT TO THE TONE ARM)
4. TONE ARM
5. TONE ARM REST
6. SPEED SELECTOR
7. STYLUS
8. NEEDLE COVER
9. TURNTABLE
10. ATMOSPHERE LIGHT
11. BUILT-IN SPEAKERS
12. VOLUME KNOB
13. RCA LINE OUT CABLE
14. USB SOCKET
15. AC POWER CORD
16. DUST COVER

PART I: Main Function

Line Out

1. Rotate the VOLUME knob counterclockwise to turn off the unit's volume. Then a "click" sound will be heard.
2. Connect the RCA line out jacks to auxiliary input sockets of your home amplifier device. Make sure to match the socket colors with the jack colors.
3. Connect the unit's power cord to the household outlet. Also, power on your amplifier device and adjust its volume level.

Phonograph

1. Connect the AC plug to the household outlet. Then the atmosphere light will light blue all the time.
2. Turn the VOLUME knob which locates at the back of the unit, clockwise to adjust to your desired volume level.
3. Put a record on the turntable. Remember to use the 45 RPM adaptor located on the right top corner when playing a 45 RPM record.

4. Remove the white plastic needle cover. Keep the needle cover in a safe and accessible place for future use.
5. Select the speed according to the record you are playing.
6. Lift and move tone arm to turntable, TONE ARM CONTROL INDICATOR will light up. Place tone

arm on the edge of the record and the record starts playing.

NOTE:

You're strongly recommended to play records with transparent dust cover closed. Also, please don't place anything on top of dust cover especially playing a record.

7. To pause or stop playing, you need to lift and move the tone arm back to the tone arm rest manually.

8. When the record reaches to its end, tone arm and rotation stop and TONE ARM CONTROL INDICATOR lights off. Lift the tone arm and place it to tone arm rest manually.

9. Remember to cover the white plastic needle guard to protect the stylus and unplug the unit.

PART II: Audacity Software



The provided CD disc contains the following software:

(1)audacity-src-2.0.2----- For source codes

(2)Audacity_for_MAC-----For Macintosh

(3)Audacity_for_WIN-----For Windows

The software is compatible with Window 98, 2000, ME, XP, VISTA, 7 and Macintosh.

NOTE: The Audacity does not support the latest upgraded MAC OS9.

Because of the variation of different operation systems, some of the interface may not be the same as below.

Audacity Installation and USB Connection

Connect one end of USB cable to the turntable and the other end into your computer. Then connect the AC power cord of turntable.

Audacity for Windows

1. Please insert the Audacity software disk that comes with your unit. Go to My Computer and double click the CD ROM Drive.



2. There are five folders in the Audacity disk. Select Audacity_for_WIN for Windows system, and select Audacity_for_MAC for Macintosh system.



3. Double click the Audacity_for_WIN for Windows system, and double click the audacity-win-2.0.2 to install the audacity software.



Installing the Audacity Software

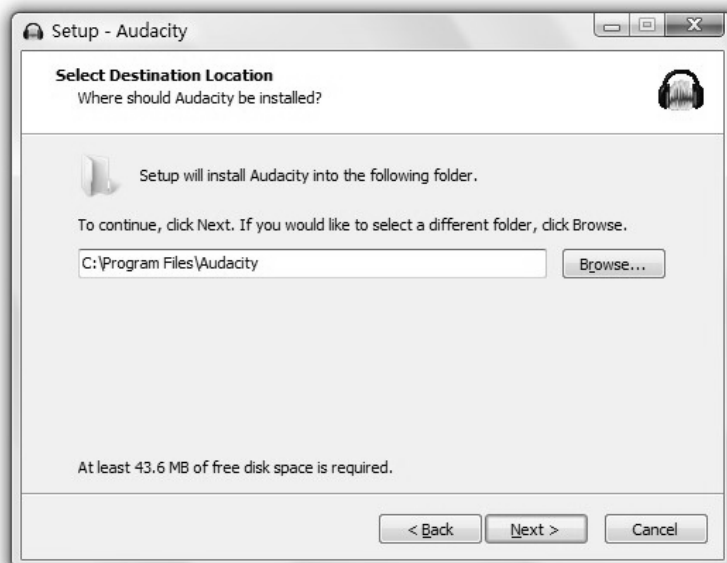
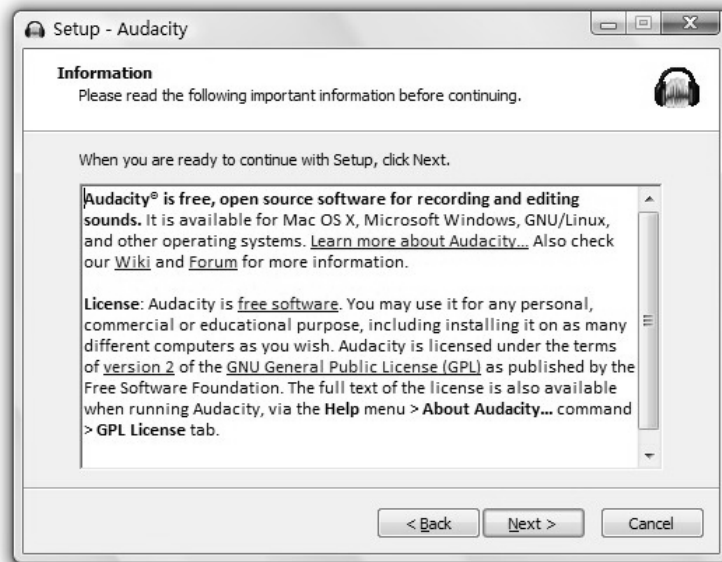
1. Select the setup language first and click on OK to continue.



2. The Audacity Setup Wizard will appear. Click on Next to install the software.

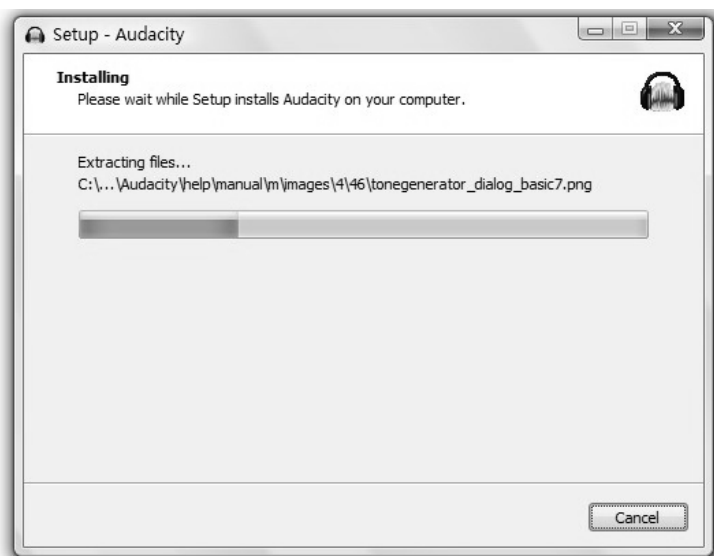
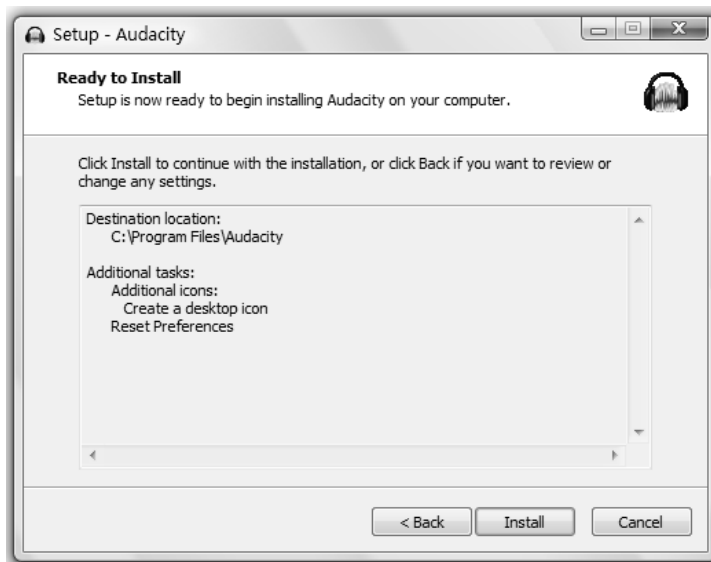


3. Continue to click on the Next buttons.

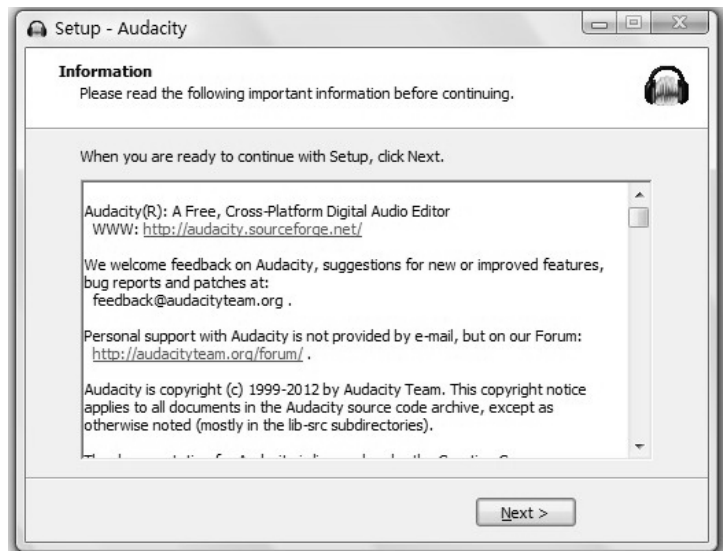




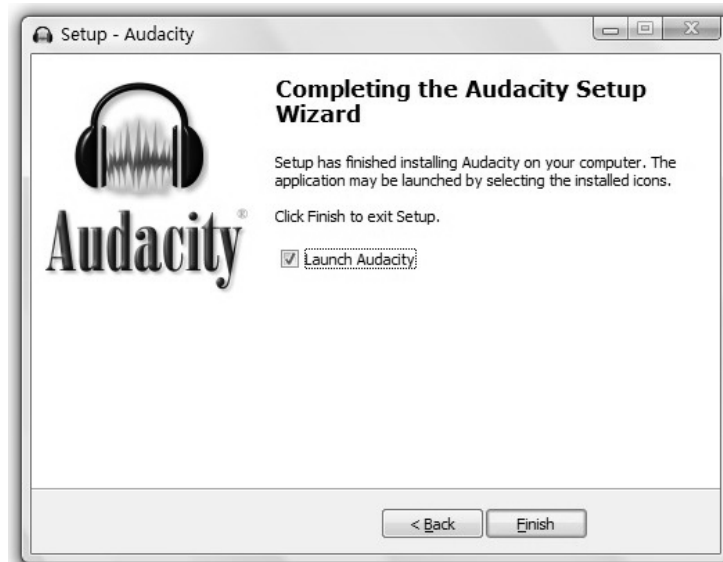
4. Click on the Install button to start installation.



5. Click on Next to continue.



6. Click on Finish to complete installation.



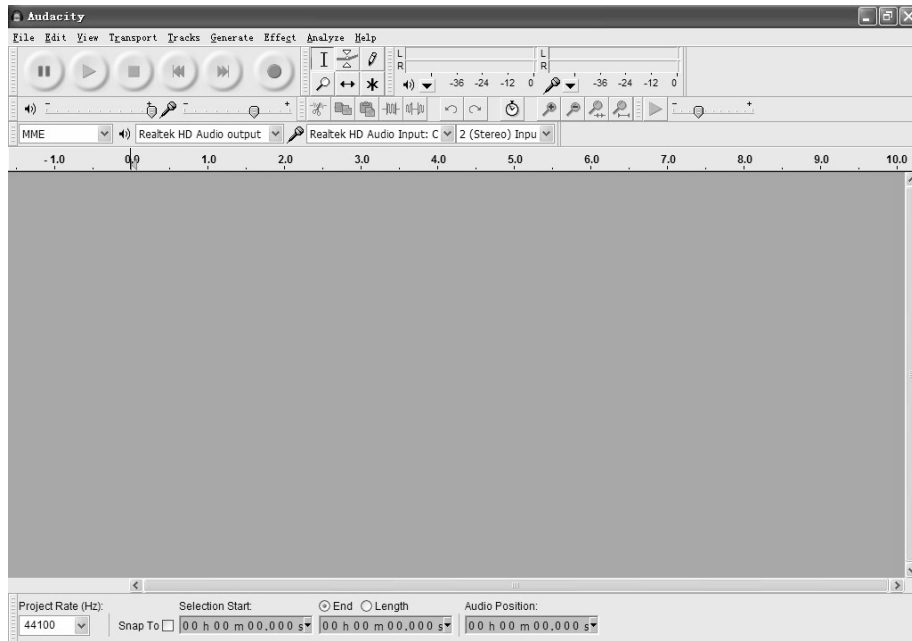
7. You can now open the Audacity software and start recording your files.

NOTE: Once you set up Audacity, you do not need to re-set it with each use.

(For additional information, visit the Audacity website at <http://audacity.sourceforge.net>)







Configuring Audacity for Microsoft Windows

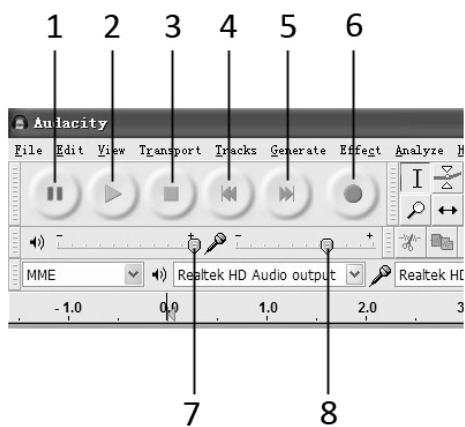
Audacity Interface



Audacity Control Buttons

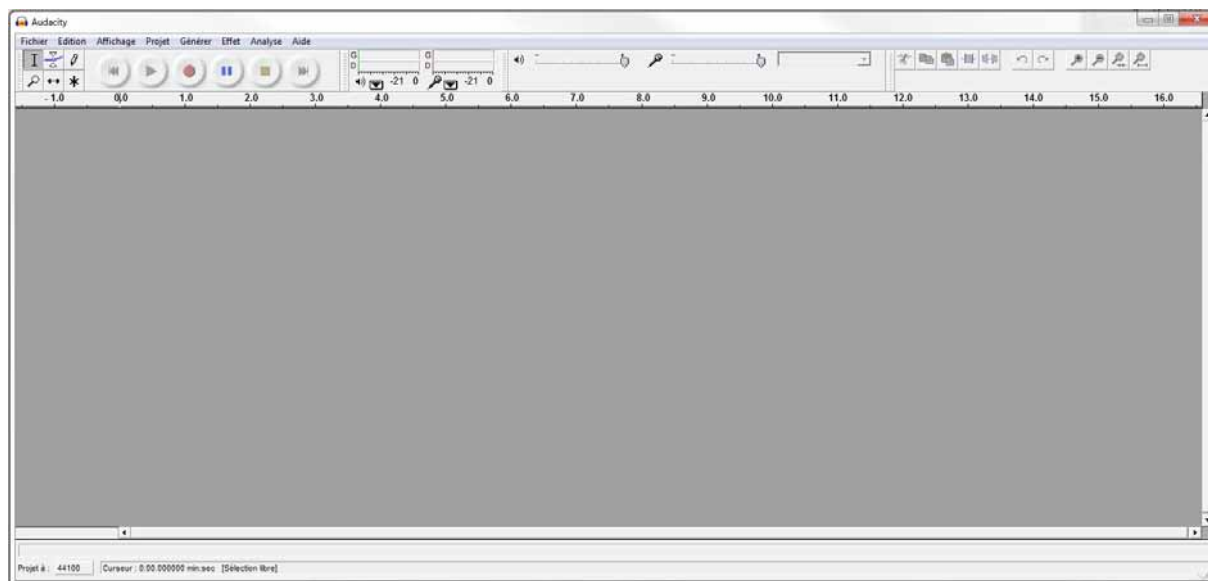
Use the attribute controls button at the top of the screen to go to beginning, Pause, Play, Stop and Record etc. Use the File, Edit, View, Transport, Tracks, Generate, Effect and Analyze menus to Save, Export, and edit the music.

1. Click the () button to pause the recording;
2. Click the () button to play;
3. Click the () button to stop the recording;
4. Click the () button to skip to start;
5. Click the () button to skip to end;
6. Click the () button to record;
7. Adjust the output volume;
8. Adjust the input volume;

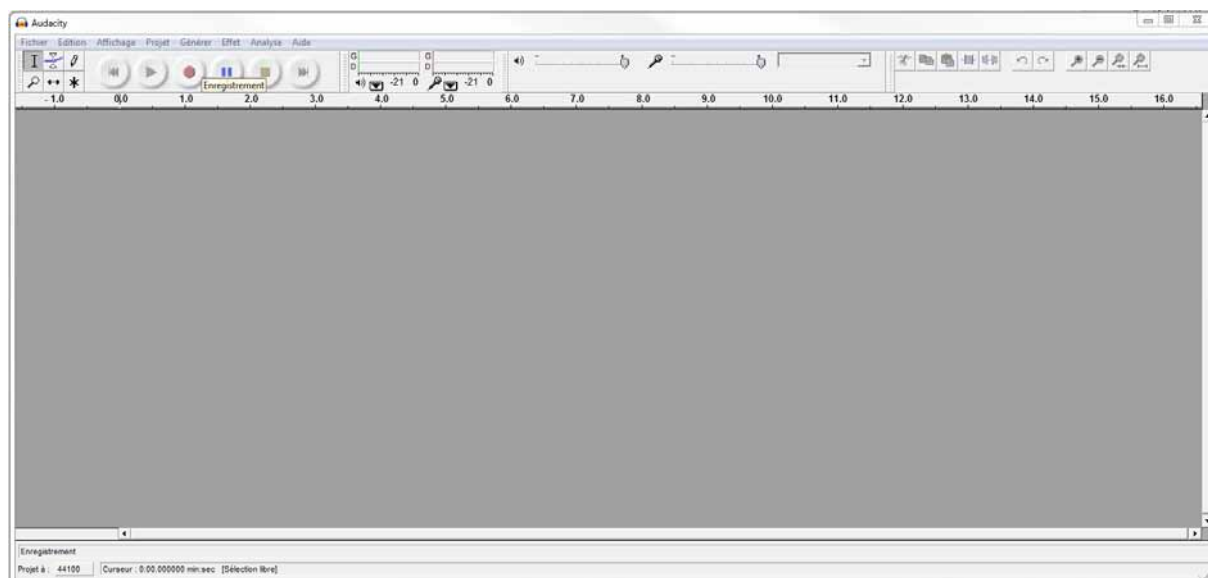


HOW TO USE AUDACITY

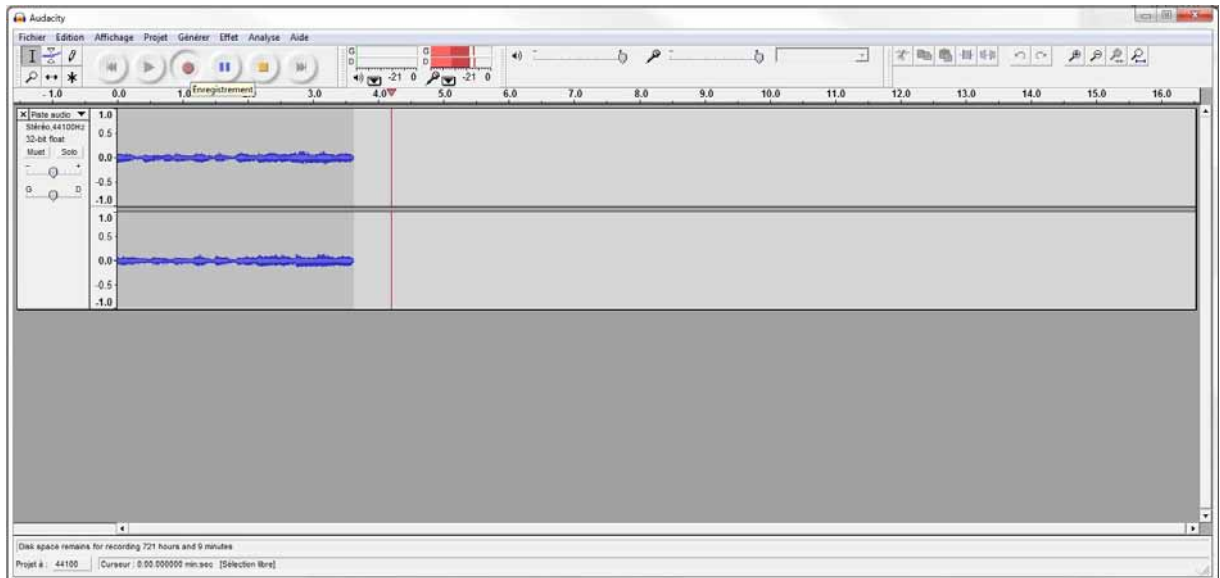
1-Launch AUDACITY.



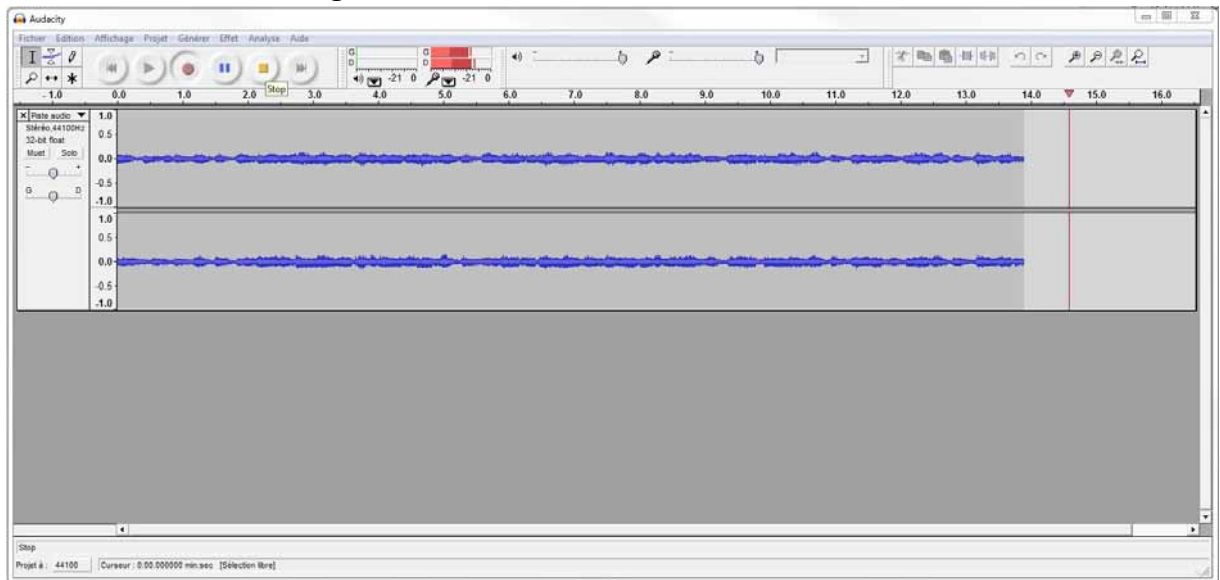
2- Put your turntable on and place your record you want to encode.



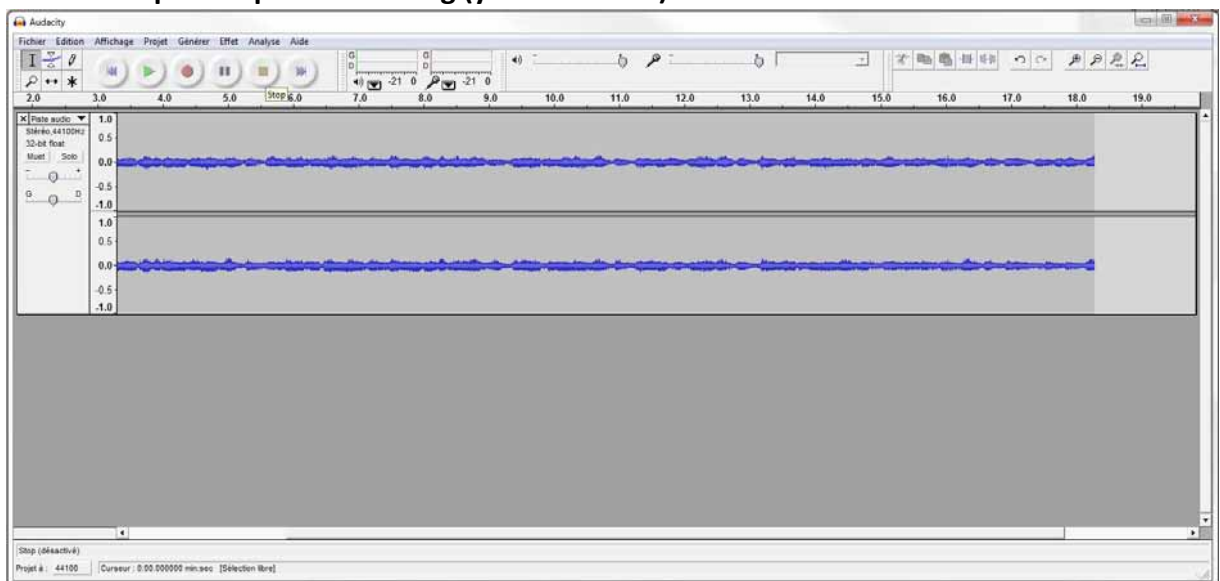
3- Launch the record and push Record button (red one).



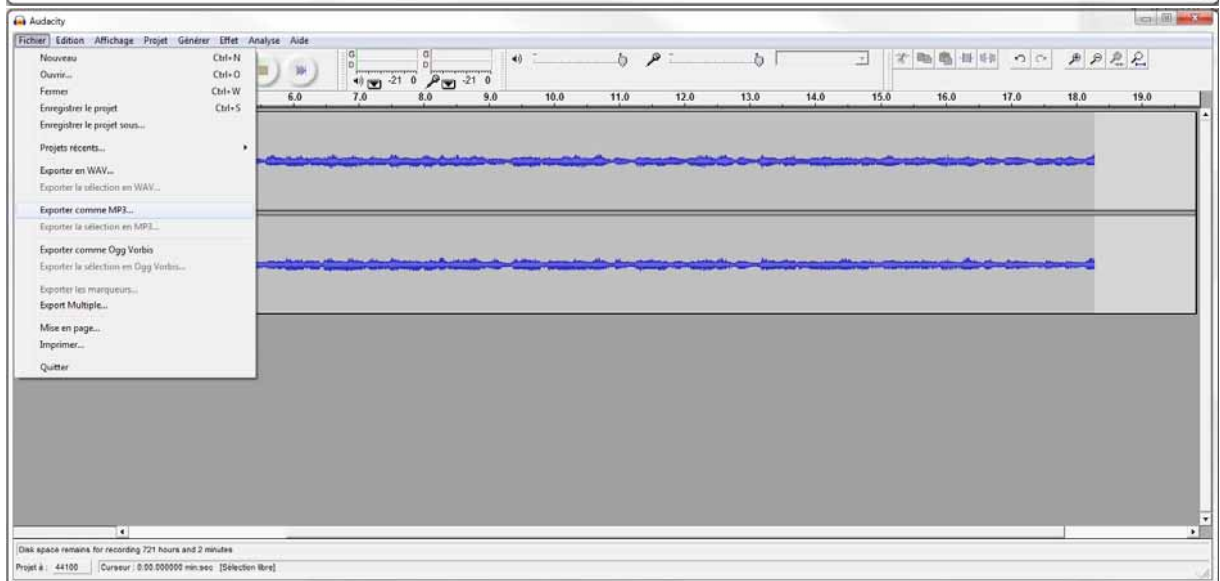
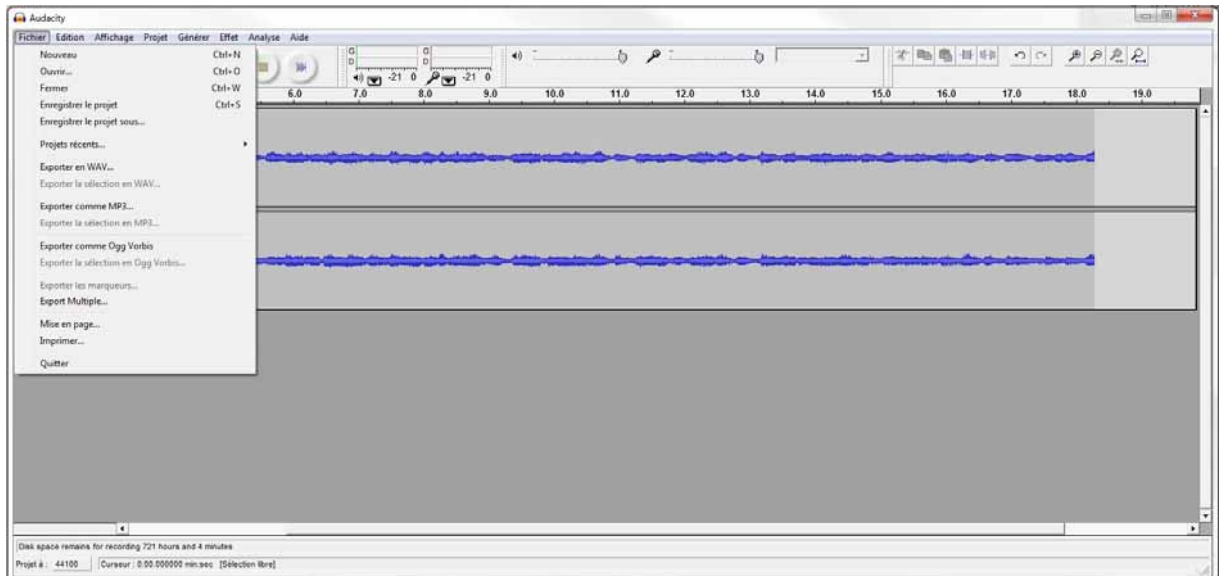
You can see the recording in blue.



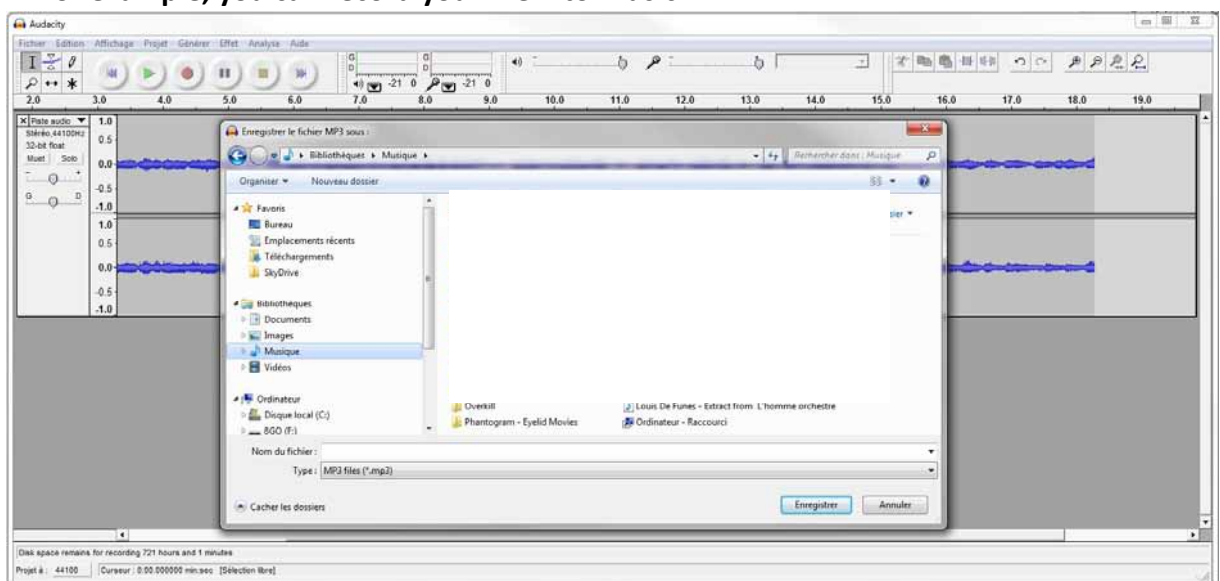
4- Push Stop to stop the recording (yellow button).



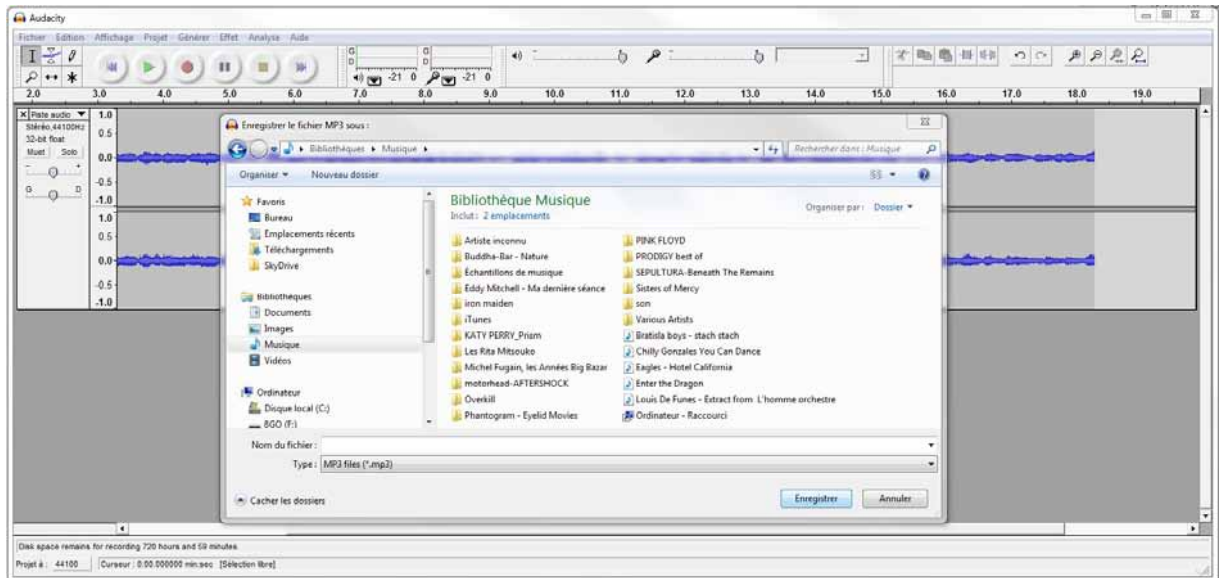
5- To record your file, go into Files and then click on 'Export as MP3'.



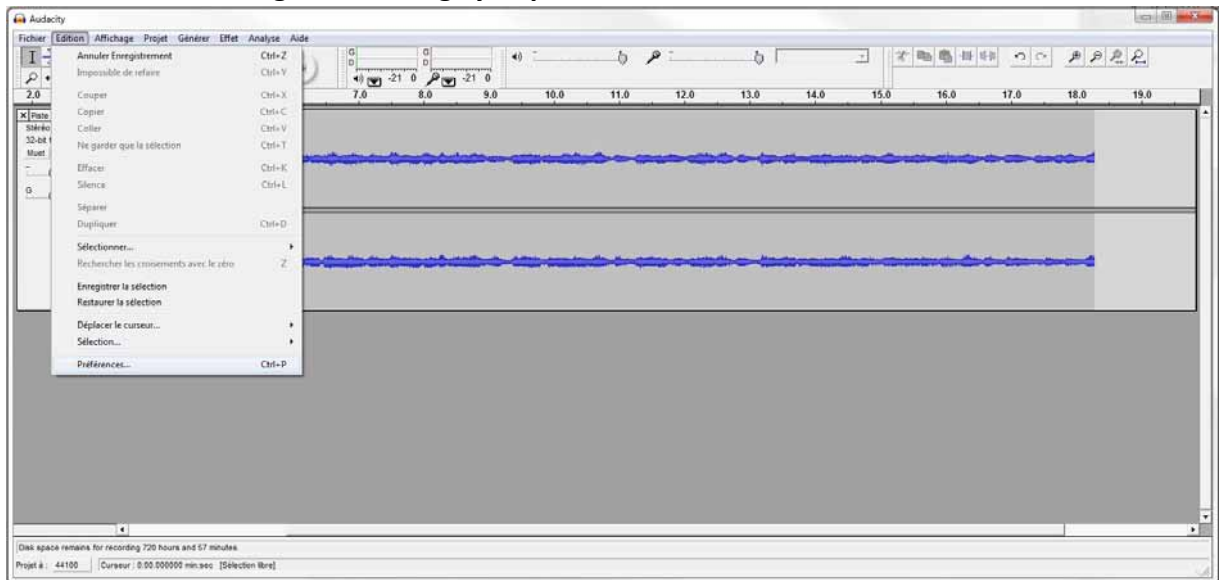
7- For example, you can record your file into Music.



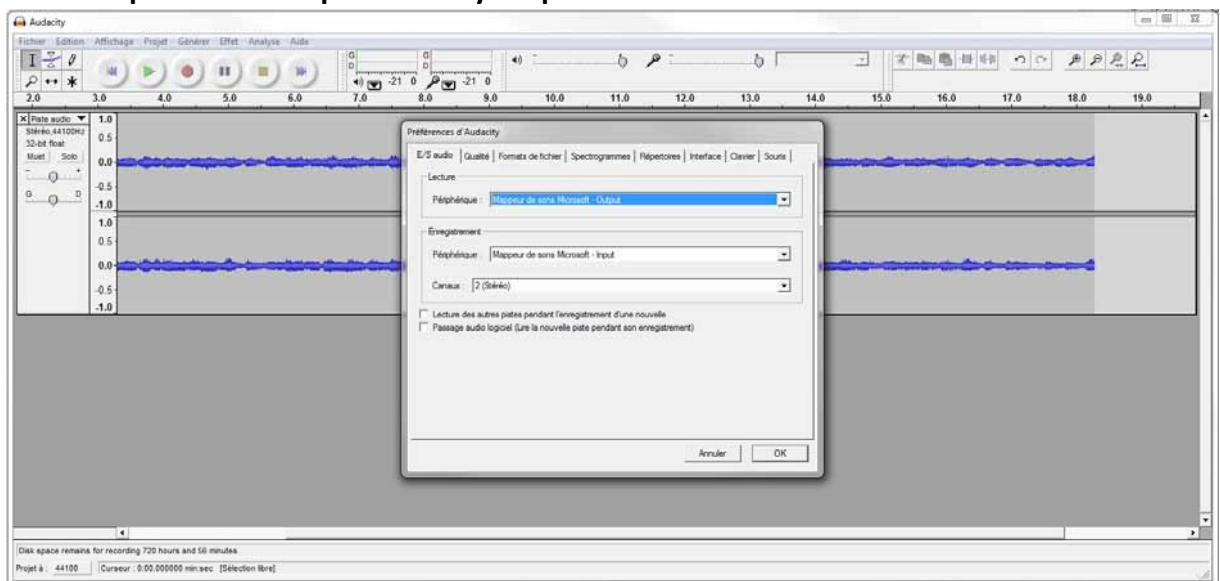
8- Click on record. Your MP3 file is kept into your menu.



9- You can also change the settings you prefer.



10- The options menu opens to set your preferences.



TROUBLESHOOTING GUIDE

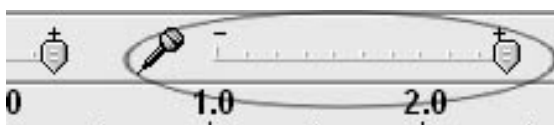
If you experience any problems with your unit, kindly consult the following guide prior to calling your dealer.

NO SOUND:

- If you are not getting any sound into the software application, go back to the preferences as shown above and make sure that you have selected the USB Audio Controller for the recording device in the devices.
- Power Cycle: Close Audacity, turn off the turntable, unplug the USB Cable. Then plug in the USB Cable, turn on the turntable and reopen Audacity.
- If you are not able to hear any audio as you play the record, please click on the microphone drop-down arrow and select Start Monitoring. This will enable you to hear the audio from the turntable, even if you have not record-enabled the Audacity application.



Check the microphone slider to make sure that it is at full volume, all the way to the right as shown below. If you find the recording sounds low or distorted, adjust the microphone slider.



POOR SOUND QUALITY:

- Check your stylus to make sure it is secured to the tone arm. The stylus must be connected to the tone arm whenever using the turntable.
- Make sure that your RCA plugs are plugged into a source or not touching bare metal. If you are experiencing noise through the USB, you may have interference from the RCA plugs. Ensure the USB cable is not touching or near any other cables.
- If you experience any odd sounds coming from the recording, try closing all applications and restarting the computer. Only run Audacity while recording.

	Problem	Cause	Solution
THE WHOLE UNIT	Power does not come on when the unit is switch on.	Unit is unplugged.	Connect the unit to the AC power supply.
	No sound comes out of the speakers.	The volume is turned down (to MIN).	Adjust the volume.
		The input selector does not match the playback source.	Re-select the desired input source.
	The sound is noisy.	The unit is too close to a TV set or another similar appliance.	Turn off the TV or other appliance, and relocate the unit.
	The unit has no response.	External factors such as ESD (Electro-static discharge) affect the unit.	Remove the power cord and all power supply device, then re-plug in the unit after one minute.
PHONO PLAYER	The sound is noisy when playing the record.	The stylus is not placed in the middle center.	Place the stylus in the middle center.
	The sound is noisy when used for a period of time.	The stylus is damaged.	Please change a new stylus.

Specification

AMPLIFIER section

Output Power.....	0.8W + 0.8W
Frequency Response.....	60 TO 20,000 Hz

PHONOGRAPH section

Motor.....	DC servo motor
Drive system.....	Belt drive
Speeds.....	33-1/3 rpm, 45 rpm and 78 rpm
Wow & Flutter.....	Less than 0.25% (WTD)
S/N ratio.....	More than 35 dB
Cartridge type.....	Ceramic stereo cartridge
Stylus.....	402-M208-165
Output level.....	160-380 mV (5 cm/sec at 1 KHz)

SPEAKER SYSTEM section

Type.....	1-way
Impedance.....	8 ohm
Input Power.....	Max. 2 W

GENERAL

Power requirements.....	AC 230 V ~ 50 Hz
Power consumption.....	7 W
Dimensions (WxHxD)	390 x 117 x 330 mm
Weight.....	3.1 kg (approx.)
Standard accessories.....	Instruction Manual 45 RPM Adaptor A Disc for Audacity Software Driver USB Cable

* As a result of continual improvements, design, specification and manual are subject to change without prior notice.

- Don't throw the electrical and electronic appliances into the usual dustbin.
- Bring them to a collecting point.
- Some parts contained in these appliances may be dangerous for health and environment.



WARRANTY & SUPPORT

Your ProTelX product has been carefully manufactured and 100% tested using high quality assured components. It is guaranteed against faulty workmanship and materials for a period of 12 months from the date of purchase. In the unlikely event that failure should occur, the unit will be repaired or replaced free of charge when returned postage paid to the address below within the guarantee period.

The guarantee does not include damage or failure resulting from misuse or damage in transit. Your statutory rights under common law are in no way affected by this guarantee.

For service in or out of the guarantee period, please return the unit postage paid to the company from where the unit was purchased.

*Repair or replacement is at the discretion of the manufacturer.

ProTelX reserves the right to change product specification without prior notice.

ProTelX

Suite B

Floor 8 St James House

Pendleton Way

Salford

Manchester

M6 5FW

Made in China