



**FREE**  
**USB STICK**

For Direct  
Recording To  
USB



User Manual

Attaché Case Turntable



# Content

Introduction .....	1
Unpacking .....	1
Location of Controls.....	2
Control Buttons .....	3
Input and Output .....	4
Turntable Mode .....	5
Aux-in Play Mode.....	5
USB Play Mode.....	6
Vinyl Record Mode.....	6
RCA Audio Out.....	6
Replace Stylus.....	7
Troubleshooting.....	7
Product Care .....	8
Product Support.....	8

## Introduction

Thanks for purchasing this product from ProtelX. Please read instructions carefully before use and store in a safe place for future reference.

## Unpacking

1. Remove packing material and set the unit on a flat, supportive surface. Make sure to remove additional items from packaging.
2. Open the lid of the unit.
3. Remove the black tie-wrap from the tone arm.
4. Remove the white stylus protective cap.
5. Release the tone arm's needle arm lock.

## Location of Controls



**A** Built-in Speaker

**B** Mode LED Display

**C** USB Disk Slot

**D** Power/Volume

**E** Control Panel

**F** RPM Switch,  
Auto-Stop Switch

**G** Stylus Arm

**H** Turntable

## Control Buttons

- Turntable
- USB
- AUX-IN
- Record



### **Turntable Mode**

Play vinyl record through built-in speakers.

### **USB Mode**

Play MP3 files stored on USB disk.

### **AUX-IN Mode**

Play music from you MP3, apple or smart device through built in speakers.

### **Record Mode**

Record vinyl to USB disk.



Press this button to switch between turntable, USB and aux in mode.



Press to STOP music playing in USB mode. Press to STOP vinyl recording in Record mode.



PLAY or PAUSE the music under USB mode.



Press to record your vinyl records, more information in record section.



Press to the NEXT song under USB mode.



Press to the PREVIOUS song under USB mode.

## Input and Output

- A AUX-IN
- B AUX-OUT
- C DC-IN



## Turntable Mode

1. Connect the small DC jack into the DC-IN port.
2. Connect the plug to a mains outlet.
3. Place the vinyl record on to your turntable.
4. Set the correct speed (rpm) of your vinyl record (33/45/78rpm)
5. Turn on the power of the turntable, you can see the red indicator of turntable mode is on.
6. Move the tone arm to the desired starting point on the record. The turntable starts to play. If auto-stop is on, the table will not spin until the arm is hovered over the record. If auto-stop is off, the turntable will spin continuously.
7. Adjust speaker volume to the preferred level.
8. At the end of the record, if auto-stop is selected on, the table will stop turning automatically. If auto-stop is off, the table will continue to spin.

## AUX-IN Play Mode

1. Press the mode button until the red light next to AUX IN is illuminated.
2. Connect any external audio source (phone, iPad, MP3 player) to AUX-IN socket at back of the turntable
3. To connect the device to the turntable, you need 3.5mm jack audio cable.
4. Control the music from your external audio source



## USB Play Mode

1. Switch the mode button to USB play mode, the red LED indicator is ON.
2. Plug the USB disk to the USB slot.
3. Press play button to start playing USB disk's music.
4. You can play own mp3 music or recorded vinyl music.

## Vinyl Record Mode

1. Press the mode button until the red LED light next to Turntable is illuminated.
2. Insert a blank USB stick into the slot
3. Place the desired vinyl onto the turntable and begin playing.
4. Press the record button on the control panel, the red light next to record will begin to flash. Press the record button once to record the vinyl in one track, press the record button twice to split the tracks.

## RCA Audio Out

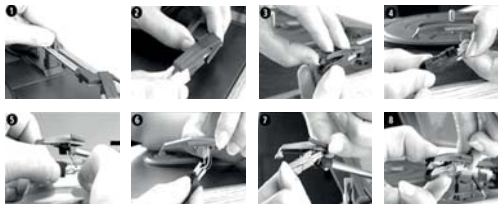
An RCA cable is included with you GPO Attache, you will require this cable to connect to extra speakers

## Replace Stylus

The turntable's stylus needs to be replaced every 3-4 months after continue playing. To buy a replacement stylus, go to [www.gporetro.com](http://www.gporetro.com) or visit one of our stockists.

## Replace Stylus

The turntable's stylus needs to be replaced every 3-4 months after continuous playing. To buy replacement stylus, go to [www.gporetro.com](http://www.gporetro.com) to order.



## Troubleshooting

### 1. No power to device?

Make sure your turntable is connected to power.

Make sure that you have turned the power dial far enough around.

### 2. Noise from the speaker?

Check your vinyl track is not damaged and your vinyl is not warped.

Your stylus needle may require replacing.

### 3. How can I play back recorded files

You can switch to USB mode to play back recorded files through built-in speakers.

### 4. Need more help?

Visit our website for further support or contact us on 0845 521 4095.

## Product Care

DO NOT leave vinyl records on the turntable after use. Return the vinyl record to its original packaging and store. Return the tone arm to its original place after use and secure with small needle arm lock. Replace the protective cap of the stylus cartridge after use. Close the turntable cover to avoid dust damage. Unplug the power cable and other cables after use.

## Product Support

Looking for more help? visit [www.gporetro.com](http://www.gporetro.com) or call 0845 521 4095. For your personal safety, do not attempt to open the device. No user serviceable parts inside and warranty void if device opened.