

# SC 260 | SC 262 USB SC 230 | SC 232 USB



Quick Guide  
Kurzanleitung  
Guide rapide  
Guida rapida

Instrucciones resumidas  
Guida rápido  
Beknopte handleiding



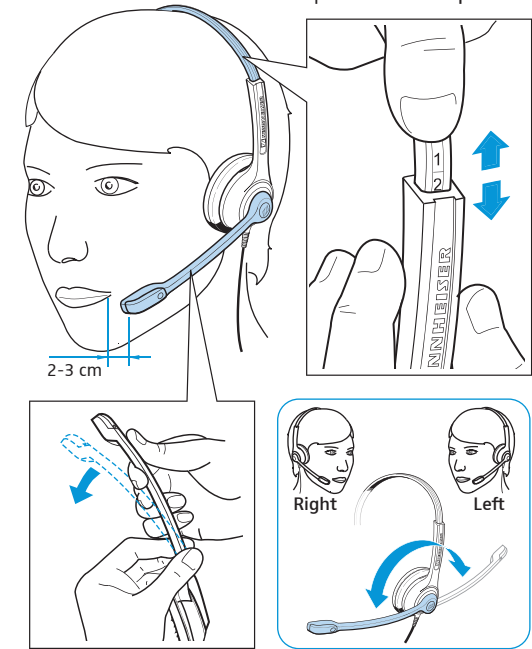
Delivery includes | Lieferumfang | Contenu |  
Volume di forniture | Volumen de suministro |  
Itens fornecidos | Leveringsomvang



Connection possibilities | Anschlussmöglichkeiten |  
Possibilités de raccordement | Possibilità di  
collegamento | Posibilidades de conexión | Ligações  
possíveis | Aansluitmogelijkheden



Wearing the headset | Headset aufsetzen |  
Mettre le casque-micro | Indossare l'headset |  
Ponerse los auriculares | Colocar o micro-auscultador | De headset opzetten



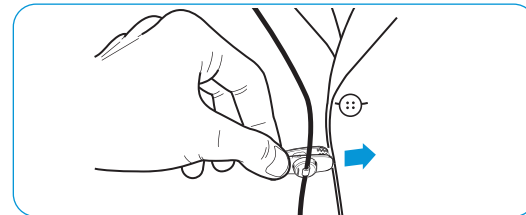
Detailed information | Ausführliche  
Informationen | Informations détaillées |  
Informazioni dettagliate | Informações  
detalhadas | Informaçoes detalhadas |  
Uitvoerige informatie



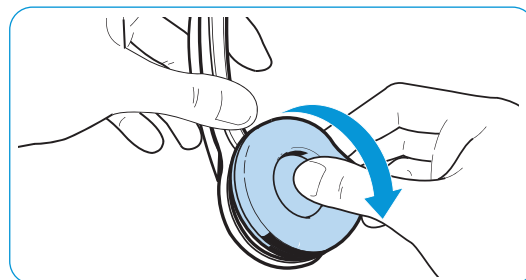
[www.sennheiser.com/  
cco/support](http://www.sennheiser.com/cco/support)

[www.sennheiser.com/  
cco/software](http://www.sennheiser.com/<br/>cco/software)

Using the cable clip | Kabel-Clip verwenden |  
Utiliser la pince pour câble | Utilizzo della clip  
per cavo | Utilizar el clip de cable | Utilizar  
o grampo para cabo | Kabelclip gebruiken

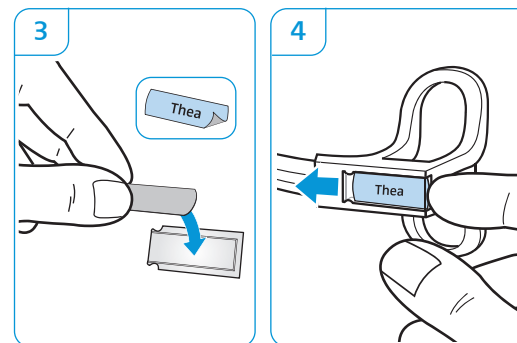
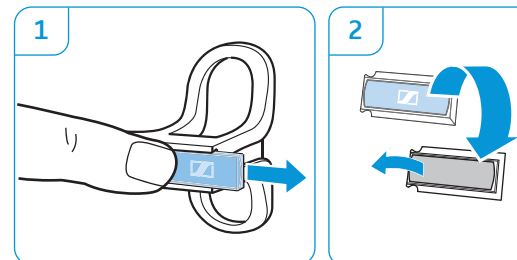


Replacing the ear pad | Ohrpolster austauschen |  
Remplacer le coussinet d'oreille | Sostituzione dei  
cuscinetti auricolari | Cambiar las almohadillas |  
Substituir as almofadas | Oorkussens vervangen

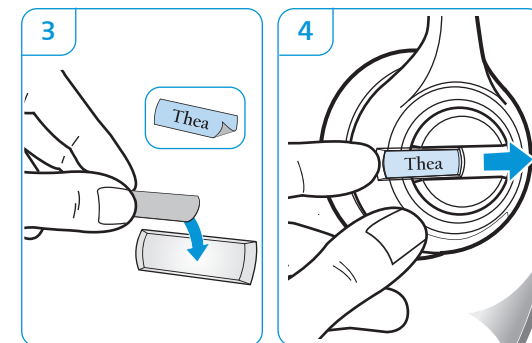
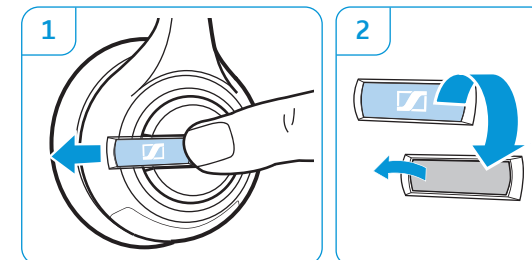


Labeling the headset | Headset kennzeichnen | Marquer le casque-micro | Contrassegni dell'headset |  
Marcar los auriculares con un nombre | Identificar o micro-auscultador | Headset markeren

SC 230 | SC 232



SC 260 | SC 262



Sennheiser Communications A/S  
Industriparken 27, 2750 Ballerup, Denmark  
[www.sennheiser.com](http://www.sennheiser.com)

Printed in China, Publ. 07/13, A03

# SC 260 | SC 262 USB SC 230 | SC 232 USB

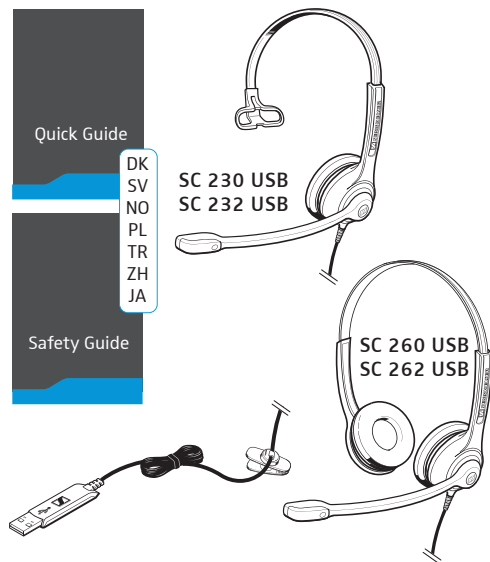


Quick Guide  
Snabbguide  
Quick Guide  
Krótka instrukcja obsługi

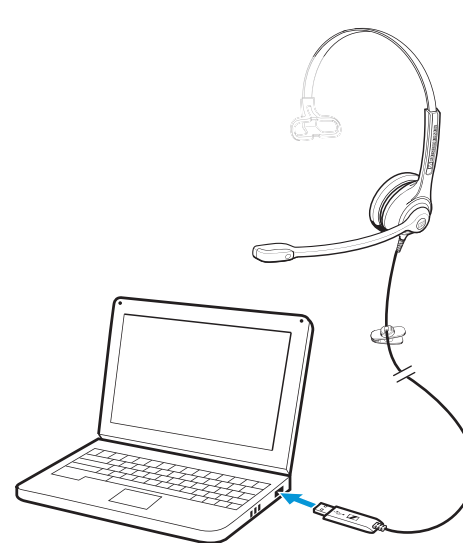
Hızlı Kılavuz  
快速指南  
クイックガイド



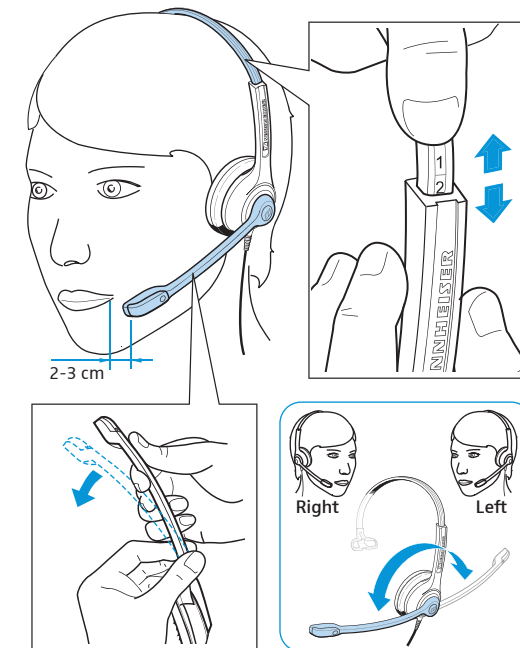
Leveringsomfang | Medföljande delar | Leveranse-  
omfang | Zakres dostawy | Teslimat Kapsamı |  
供货范围 | 同梱されているもの



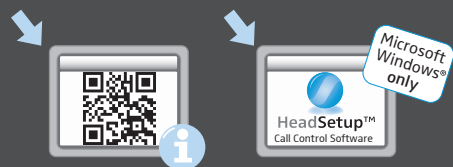
Tilslutningsmuligheder | Anslutning | Tilkoblings-  
muligheder | Możliwości podłączenia | Bağlantı  
olanakları | 连接可能性 | 接続方法



Brug af hovedsæt | Ta på headsetet | Sette på  
hodesettet | Zakładanie zestawu słuchawkowego |  
Kulaklığın takılması | 戴上耳机 | ヘッドセットを装着する



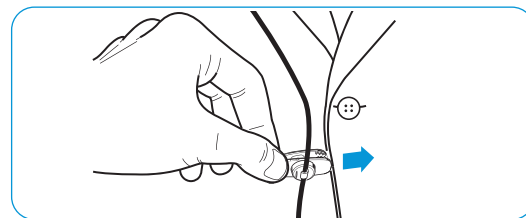
Udførlige informationer | Mer information |  
Detaljert informasjon | Szczegółowe  
informacje | Ayrıntılı bilgiler |  
詳細情報 | 詳細情報



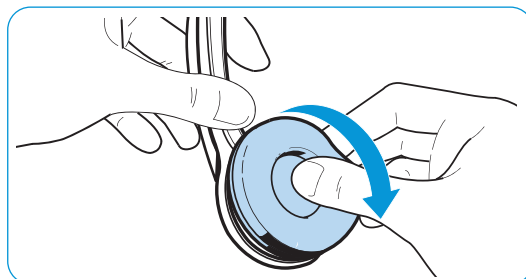
[www.sennheiser.com/  
cco/support](http://www.sennheiser.com/cco/support)

[www.sennheiser.com/  
cco/software](http://www.sennheiser.com/<br/>cco/software)

Brug af kabelclips | Använd kabelklämman |  
Bruk av kabelklips | Używanie zacisku kablowego |  
Kablo mandalı kullanılması | 使用耳机线夹 |  
ケーブルクリップを使用する

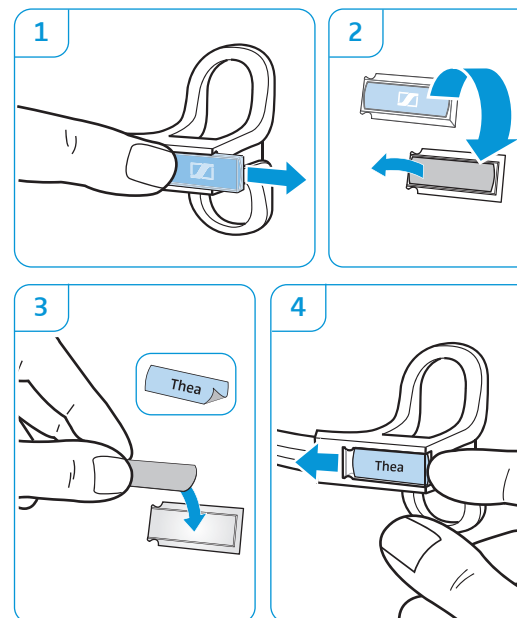


Udskiftning af ørepolstringer | Byt öronkuddar |  
Utskiftning av öreputer | Wymiana poduszek  
słuchawkowych | Kulak yastığının değiştirilmesi |  
更換耳墊 | イヤーパッドを交換する

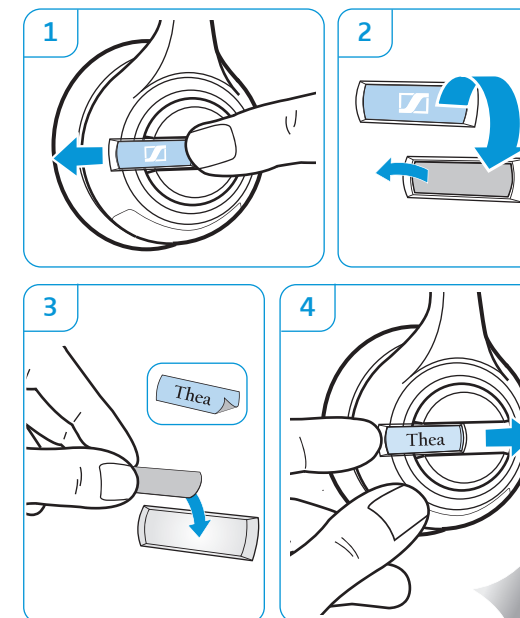


Identifikation af hovedsættet | Märk headsetet | Merke hodesettet | Oznakowanie zestawu  
słuchawkowego | Kulaklık setinin işaretlenmesi | 标记通讯耳 | ヘッドセットにラベルを付ける

SC 230 | SC 232



SC 260 | SC 262



Sennheiser Communications A/S  
Industriparken 27, 2750 Ballerup, Denmark  
[www.sennheiser.com](http://www.sennheiser.com)

Printed in China, Publ. 07/13, A03

