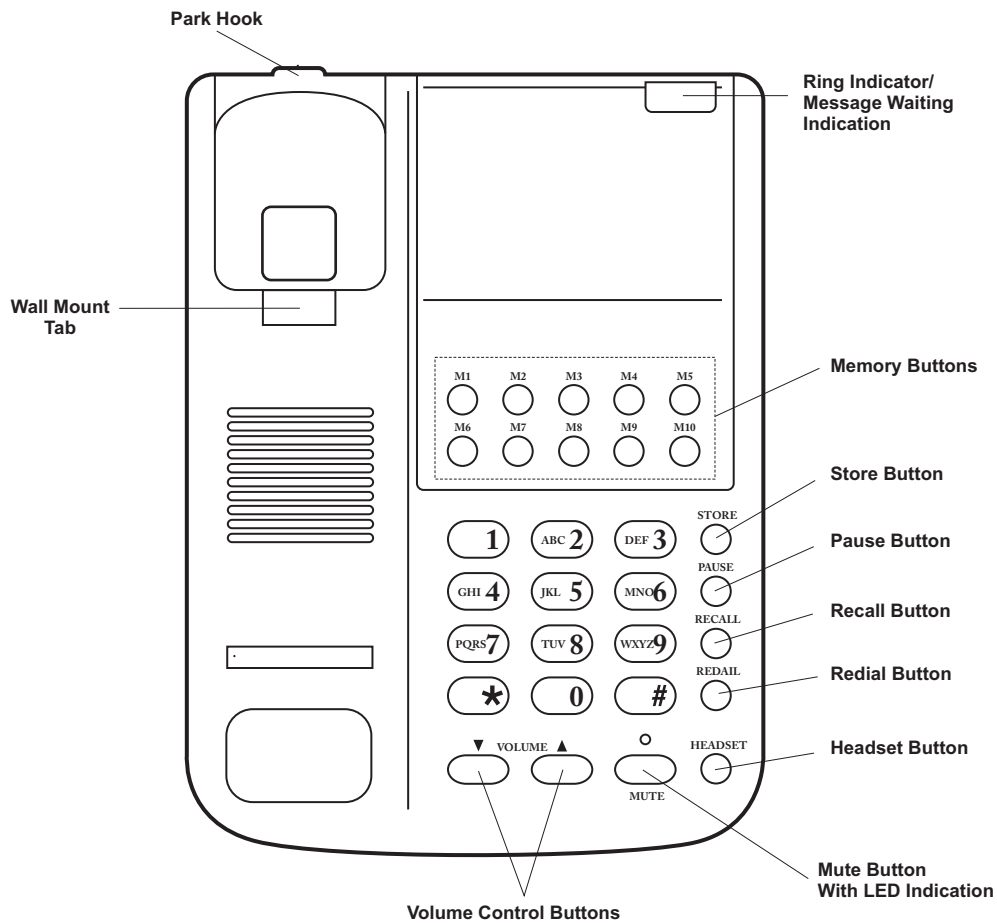




# **DBT 2000** **USER GUIDE**

[www.trojantel.co.uk](http://www.trojantel.co.uk)

# The layout of your DBT 2000



## Contents

1. INSTALLATION
2. OPERATION
  - 2.1 Redial Button
  - 2.2 Ringer Pitch Setup
  - 2.3 Ringer Volume Setup
  - 2.4 Receiver Volume Control
  - 2.5 Mute Button
  - 2.6 Modem Socket
  - 2.7 Pause Button
  - 2.8 Recall Button
  - 2.9 Message Waiting
  - 2.10 Headset Facility
  - 2.11 One Touch Memory Buttons
  - 2.12 Hear-aid compatibility
3. APPROVED USE
4. CE APPROVED
5. NUMBER OF PHONES THAT CAN BE CONNECTED

# Installation & Operation

## 1. INSTALLATION

Connect one end of the coil cord to the handset and the other end to the handset socket located on the left hand side of the phone. Replace the handset to the cradle.

Connect the small plug of the telephone line cord to the socket at the back of the unit and the other plug to the telephone socket at the wall. After connecting the telephone to the line socket, the handset should be lifted to check dial tone is being received.

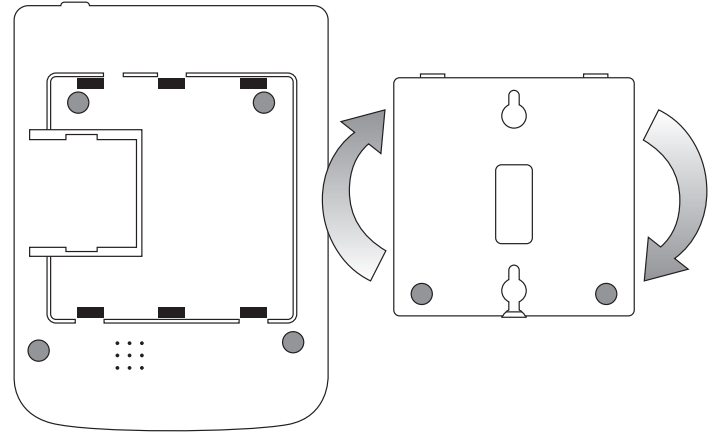
The DBT 1000 telephone is supplied with the mounting bracket fixed in the wall mount position. For desk purposes, you should remove the bracket and then replace in the reverse position.

## 2. OPERATION

### 2.1 Redial Button

If you dial a number and find it is engaged or there is no reply, replace the handset. The number will be retained in the memory until you dial a different number.

**What to do:** Lift the handset  
Press the REDIAL button



2

# Operation

### 2.2 Ringer Pitch Setup

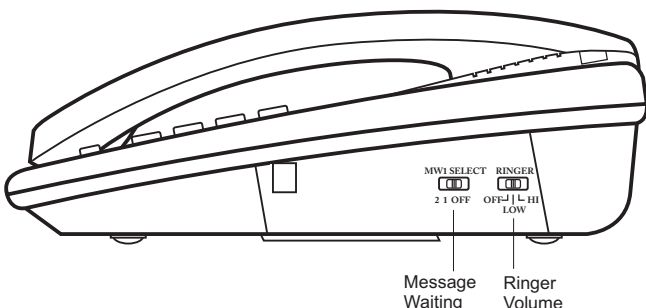
There are three options for the ringer pitch setting and they are programmed as follows:

1. Lift the handset
2. Press '3'(Slow Ring), '6' (Normal Ring) or '9' (Fast Ring) on the keypad
3. Replace the handset

### 2.3 Ringer Volume Setup

The ringer volume on the telephone can be set by the switch located on the right hand side of the telephone. Set the switch to either High, Low or OFF.

**NOTE:** When the ringer volume is set to OFF, the ringer indication will still flash to show that the phone is ringing.



### 2.4 Receiver Volume Control

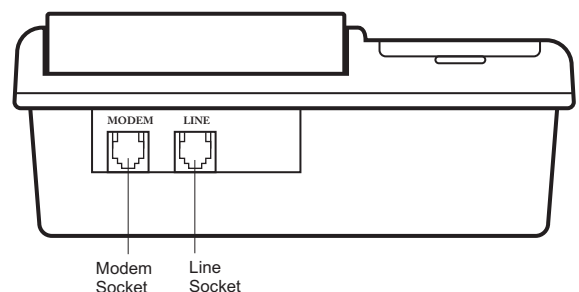
The receive volume can be adjusted UP or Down by pressing the two volume control buttons. The phone will remember the last volume setting when making a new call.

### 2.5 Mute Button

During a conversation the microphone on the telephone handset can be muted by pressing the MUTE button. The LED will flash to indicate that the mute is on. To turn off the mute facility, press the Mute button again.

### 2.6 Modem Socket

On the rear of the telephone there is a modem socket which allows the connection of a PC Modem, Fax machine or other telephone device. The phone handset needs to be in the cradle for the PC Modem or Fax machine to use this socket.



3

## 2.7 Pause Button

Pressing the PAUSE button during dialling will put a 2 second pause in the dialling sequence. This is needed on some telephone systems where you may be required to dial an access code to obtain a line before dialling your number.

## 2.8 Recall Button

If you are connected to a telephone system the RECALL button is used for transferring calls or accessing other system features.

On a normal telephone line the RECALL button may be used for select services supplied by the telephone line provider.

## 2.9 Message Waiting

The DBT 1000 telephone is designed to work with many analogue PBX telephone systems that use either 90V or Line Reversal message waiting signalling. The MWI switch is located on the right hand side of the phone.

OFF - This setting should be used when a constant voltage is sent by the telephone system to indicate a message is waiting (90V system).

1 - This setting should be used when the system supplies a line reversal to indicate that a message is waiting. In normal use the MWILED should be off.

2 - If the MWILED is on in normal operation, set the switch to position 2.

## 2.10 Headset facility

The HEADSET button enables you to use the telephone without lifting the handset. Connect a headset and simply press the HEADSET button once to connect to the line. Pressing the HEADSET button again will disconnect the telephone line and terminate the call.

During a headset (handsfree) conversation, lifting the handset will switch the unit to the handset mode. The headset will be disabled and the handset should be used for conversation instead. The headset mode will be activated again by pressing the HEADSET button and replacing the handset.

## 2.11 One Touch Memory Buttons

To store numbers into the memory locations:

1. Lift the handset
2. Press the STORE button followed by the memory location

4

# Operation & Approved Use

3. Enter on the telephone keypad the number you wish to store
4. Press the STORE button
5. Replace handset

If you program a number onto a memory location that already has a number assigned, it will be over written.

To call a number stored in the memory, lift the handset or press the HEADSET button then press the memory button you require.

## 2.12 Hear-aid compatibility

The handset receiver is hearing aid compatible.

## 3. APPROVED USE

The DBT 2000 can be connected to the Public Switched Telephone Network (PSTN) and compatible to PABX's but not connected in the following manner: -

1. As an extension to a payphone.
2. On shared service line or 1+1 carrier system.

## Network Compatibility

The DBT 2000 has been approved pursuant to

European harmonized standards:

### **Health & Safety:**

EN60950-1:2001 (+A11:2004)  
EN50371:2002

### **Electromagnetic Compatibility:**

EN55022:2006 emissions  
EN55024:1998 + A1:2001 immunity.

### **Telecom:**

ES 203021 Parts 1, 2 & 3  
TBR38

## **4. THE NUMBER OF TELEPHONES THAT MAY BE CONNECTED**

If you connect too many telephones to your line they may not ring correctly. To determine the number of telephones that can be satisfactorily connected to your line, add together the ringer equivalent numbers (RENs) of all the equipment you wish to connect. If this number exceeds four, your telephones may not ring. Your DBT 2000 telephone has an REN of one (1). BT telephones have an REN of one unless otherwise marked.

5

## 5. WARRANTY

Trojan Telecom has built the DBT 2000 telephone to a high standard. Our warranty reflects our belief that during its working life you should not experience any mechanical failures.

Trojan Telecom will at all times use a sensible and supportive attitude towards warrantable returns, working with you in identifying 'no fault found'.

The following terms and conditions apply:

- 1) Where we find a genuine warranty failure, Trojan Telecom will replace the faulty instrument with a one-for-one replacement.
- 2) It is the responsibility of the user to return the faulty telephone to Trojan Telecom. We ask you to cover this cost and we will return your replacement telephone at our expense.
- 3) We reserve the right to repair the faulty item or replace it with a similar telephone of the same make.
- 4) Discontinued models under warranty will be replaced with a similar or more featured telephone.

5) We reserve the right to charge for items considered to be chargeable under fair wear and tear.

6) User misuse or any modification carried out to the DBT telephone by the customer is not considered a manufacturing fault or component defect. Therefore it is not covered by the warranty.

7) Accidental damage such as liquid spillage or user damage will not be covered under the terms of the warranty.

8) When returning the telephone please ensure you fully complete the returns authorisation form, failure to do so could cause you unnecessary delay.

The terms of this warranty do not effect your statutory rights.

Warranty applies to UK customers only.

6

Faulty units should be returned to our service centre at the following address, together with the completed return form on the opposite page.

SERVISCOMM  
UNIT 2, RED BARNES WAY  
McMullen Road, Darlington  
DL1 2RR UK

7

**Trojan  
Telecom**



**Ist Floor  
Amphenol Complex  
Thanet Way  
Whitstable  
Kent  
CT5 3JF  
ENGLAND**

**Tel: (+44) (0)1227 275357      Fax: (+44) (0)1227 272932  
e-mail: [info@trojantel.com](mailto:info@trojantel.com)**