

### 1. LCD Screen



Channel Number. Changes from 1 to 8 as selected by the user.



Displays the current Battery charge level.



Displays the current Speaker volume level.



Displayed when the Key Lock feature is activated.



Displayed when transmitting a signal.



Displayed when receiving a signal.

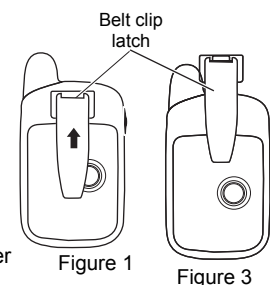


Blinks when the Scan feature is turned ON.

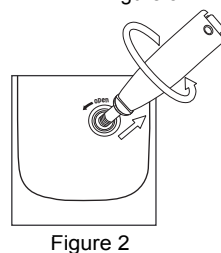
### 2. Installation

#### 2.1 Removing the Belt Clip

- Pull the Belt Clip Latch away from the PMR.
- While pulling the Belt Clip Latch, push up the Belt Clip as shown in Figure 1.



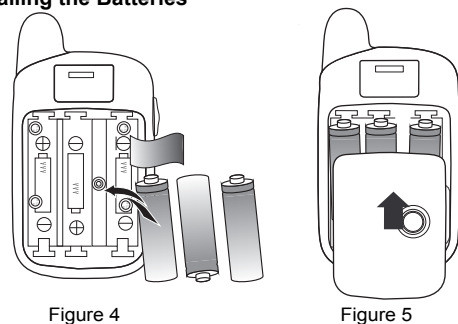
- Loosen the screw counter clock wise direction using a coin or belt clip open the battery compartment as shown in Figure 2



#### 2.3 Installing the Belt Clip

- Slide the Belt Clip into the slot as shown in Figure 3.
- A "click" indicates the Belt Clip is locked into position.

#### 2.4 Installing the Batteries



Caution: Observe the proper battery polarity orientation when installing batteries. Incorrect positioning can damage both the batteries and the unit.

- Slide down the Battery Compartment Cover.
- Insert 3 "AAA" size batteries (not included) by following the polarity marking inside the Battery Compartment as shown in Figure 4.
- Replace the Battery Compartment Cover. **Tighten the battery door screw firmly to meet the IPX6 standard.** See Figure 5.

#### Notes:

- Use only same type and make of batteries on the PMR units.
- The PMR units have a built-in Power Saver (PS) for maximum battery life, but when not in use, turn the units OFF to conserve battery power
- Remove the batteries if the units will not be used for a long period of time.

**Binatone Help Line - 0845 345 9677**

### 3. Waterproof standard IPX6

**though this unit is designed to meet IPX6 standard, it can be kept 1 meter under water for 1 minutes.**

### 4. Operation

#### 4.1 Turning the Unit ON/OFF

- To Turn ON;
  - Press and hold the (Power) button. A special "beep" sound will be heard. The LCD Screen will be illuminated by an orange light for several seconds, and will display the current channel.
  - To switch OFF;
    - Press and hold the (Power) button. A special "beep" sound will be heard and the LCD Screen will turn blank.

#### 4.2 Adjusting the Speaker volume

- There are 8 volume levels, the current speaker volume level is displayed on the LCD Screen. To adjust the speaker volume level, press the (UP) button to increase, or press the (DOWN) button to decrease. The LCD Screen will display the speaker volume icon bars ascending, or descending respectively.

#### 4.3 Receiving a Call

The unit is continuously in Receive mode when the unit is turned ON and not transmitting. When a signal is received on the current channel, the receive signal icon "RX" will be displayed on the LCD Screen.

#### 4.4 Transmitting (sending)

- Press and hold the PTT (Push to Talk) button to transmit your voice. The transmit signal icon "TX" will display on the LCD Screen.
- Hold the unit in a vertical position with the Mic (Microphone) 5 cm away from the mouth. While holding the PTT button, speak into the mic (microphone) in a normal tone of voice.
- Release the PTT button when you have finished transmitting.

#### Important:

- In order for other people to receive your transmission, they must also be on the same channel that you are currently using. Refer to the "Changing Channel" section for more information.
- When the PTT and/or CALL buttons are continuously pressed, your PMR cannot receive any transmissions.

#### 4.5 Roger Beep

The Roger Beep is a tone which is automatically transmitted whenever the PTT button is released. This alerts the receiving party that you have ended the transmission, and you are now in receive mode.

#### 4.6 Changing Channels

- The PMR has 8 available channels. To change channels, in normal mode;
  - Press the MENU button, the Channel icon "i" on the LCD Screen will start blinking.



- While the Channel icon is blinking, press the (UP) or (DOWN) button to select the desired channel. The channel changes from 1 to 8, or from 8 to 1.
- Press the MENU button to confirm your selection and return to the normal mode.

#### 4.6.1 Monitor

You can use the Monitor feature to check for weak signals on the current channel.

- To activate, press and hold the MENU and the (UP) button at the same time.
- If you hear constant noise and hissing, press the MENU button to turn off the Monitor function.

#### Note:

- Refer to the "Channel Table" section of this Owner's Manual for detailed frequency listing.

#### 4.7 Channel Scan

Channel scan performs searches for active signals in an endless loop from channels 1 to 8. This allows you to find other radios without having to change channel. To activate this feature;



- Press and hold down the (UP) or (DOWN) button for 3 seconds. The channel number on the LCD Screen changes rapidly until an active signal is detected.
- When an active signal (one of the 8 channels) is detected, channel scan pauses on the active channel.
- Press the PTT button to communicate through the active signal channel, and the channel scan will be deactivated. (OR press the (UP) or (DOWN) button to continue the channel scanning.)
- Press the MENU button to stop the channel scanning operation.

#### 4.8 Key Lock

The Key Lock feature allows the user to disable the (UP), (DOWN), and the MENU buttons so that the PMR settings cannot be changed accidentally.



- To activate the Key Lock feature, press and hold the MENU button until the Key Lock icon () appears on the LCD Screen.
- To deactivate the Key Lock feature, press and hold the MENU button again until the Key Lock icon () disappears on the LCD Screen.

The PTT, CALL, and the (Power) buttons will remain functional even if the Key Lock feature is activated.

#### 4.9 Calling (Paging) Tone

You can use the CALL button to send a tone to other users on the same channel. To activate this feature;



- With the PMR in normal mode, press and release the CALL button. The unit will transmit a 2-second page tone to the other unit/s set with the same channel within transmitting range.

## 5. Auxiliary Features

### 5.1 LCD Screen Back Light



Every time a button is pressed (except PTT button), the LCD Screen back light will illuminate for 4 seconds.

### 5.2 Power Saving

Your PMR unit has special circuitry designed to extend the life of your battery. When the unit is not used for 4 seconds, it will automatically switch into a low power mode. The Power Saving feature does not affect the PMR's ability to receive transmissions. When a signal is detected, it automatically returns to full power mode.

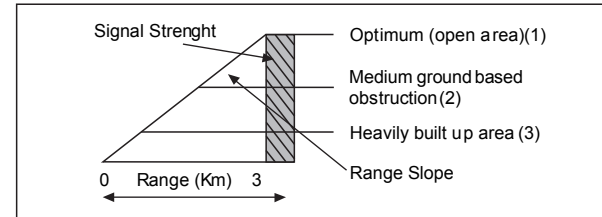
### 5.3 Battery Meter Indicator

The PMR can detect the battery charge levels. The Battery icon will display the battery charge status as follows;

-  Battery charge at high level.
-  Battery charge at low level. Important: Replace the Batteries. Use only Alkaline "AAA" 1.2V batteries.

## 6. Effective Range

The Transmission range of the product is dependent on the environment terrain where it is being used, the following diagram attempts to guide the user on the sort of performance to expect for everyday use.



### Range Check

The Transmission range will be affected as shown in the above diagram. The transmitting range typical values for different environment conditions will be (1) 3 km (2) 1.5 km (3) 750m. It should be remembered that these are only guide values as actual achieved distances will be dependent on the environment and terrain.

## 7. Specifications

Channels Available	8 Channels
Output Power (TX)	0.5W
Range	Up to 3 Kms. (2 Miles)

**Binatone Help Line - 0845 345 9677**

## Channel Frequency Table

Channel	Frequency (MHz)	Channel	Frequency (MHz)
1	446.00 625	5	446.05 625
2	446.01 875	6	446.06 875
3	446.03 125	7	446.08 125
4	446.04 375	8	446.09375

## 8. Safety

### ⚠ CAUTION Damaged Antenna

Do not use any PMR that has a damaged antenna. If a damaged antenna comes in contact with the skin, a minor burn may result.

### Batteries

All batteries can cause property damage and/or bodily injury such as burns if conductive material such as jewelry, keys, or beaded chains touch exposed terminals. The material may complete an electrical circuit (short circuit) and become quite hot. Exercise care in handling any charged battery, particularly when placing it inside a pocket, purse, or other container with metal objects.

### ⚠ WARNING For Vehicles with an Air Bag

Do not place your PMR in the area over an air bag or in the air bag deployment area. Air bags inflate with great force. If a PMR is placed in the air bag deployment area and the air bag inflates, the PMR may be propelled with great force and cause serious injury to the occupants of the vehicle.

### Potentially Explosive Atmospheres

Turn your PMR OFF when in any area with a potentially explosive atmosphere, unless it is a type especially qualified for such use (for example, Factory Mutual Approved). Sparks in such areas could cause an explosion or fire resulting in injury or even death.

### Batteries

Do not replace or charge batteries in a potentially explosive atmosphere. Contact sparking may occur while installing or removing batteries and cause an explosion.

### Blasting Caps and Areas

To avoid possible interference with blasting operations, turn your PMR OFF near electrical blasting caps or in a "blasting area" or in areas posted: "Turn off the two-way radio." Obey all signs and instructions.

**NOTE:** Areas with potentially explosive atmospheres are often, but not always, clearly marked. They include fueling areas such as below deck on boats; fuel or chemical transfer or storage facilities; areas where the air contains chemicals or particles, such as grain, dust, or metal powders; and any other area where you would normally be advised to turn off your vehicle engine.

## 9. Cleaning and Care

To clean your PMR, use a soft cloth dampened with water. Do not use cleaners or solvent, which may cause damage that may not be covered by guarantee.

**Binatone Help Line - 0845 345 9677**

## 10. Guarantee and service

The Binatone marina 300 is fully guaranteed for 12 months from the date of purchase shown on your sales receipt. The guarantee does not cover damage by misuse or negligence, or by excessive voltage.

Please keep your sales (bill) receipt - this is your guarantee. You should also keep the original packaging materials.

When unpacking your Binatone marina 300, check for visible damage. If you see any damage, do not use the PMR - return the whole unit to where you bought it.

If your Binatone marina 300 develops a fault, refer to the "Troubleshooting Guide." section of this manual. If you can't solve the problem, return the whole unit as follows:

### While the unit is under guarantee

- Pack up all the parts of your marina 300, using the original packaging.
- Return the unit to the store where you bought it, and make sure you take your sales receipt as your proof of purchase.
- In the unlikely event that you need to return your marina 300 to our Repair Centre while it is under Guarantee, please include the sales receipt. There will be an £5 handling charge for repair of unit under Guarantee.

### Repair after the Guarantee has expired

- If the unit is no longer covered by Guarantee, first follow steps 1 as for repair under Guarantee, Then..
- Call our service Department on 0845 345 9677 and ask for a quotation of the repair charge, and details of where to send your M300 for repair.
- Return your marina 300 to the address given by the Service Department, making sure to include your name and address, and a cheque or postal order for the value of the repair charge.

### This does not affect your statutory rights.

Binatone Telecom plc operates a policy of continuous product improvement, and so reserves the right to make changes to the product and functions without prior notice.

### This equipment is intended for use in:

Austria	✓	Finland	✓	Latvia	✓	Spain	✓
Belgium	✓	France	✓	Liechtenstein	✓	Sweden	✓
Bulgaria	✓	Germany	✓	Luxemburg	✓	Switzerland	✓
Croatia	✓	Greece	✓	The Netherlands	✓	Turkey	✓
Cyprus	✓	Hungary	✓	Norway	✓	UK	✓
Czech	✓	Iceland	✓	Poland	✓	Romania	✓
Denmark	✓	Ireland	✓	Portugal	✓		
Estonia	✓	Italy	✓	Slovenia	✓		

### ✓ Countries of use

**Caution:** Use only same type and make of batteries. To reduce the risk of electric shock, do not expose this appliance to rain or moisture.

## 11. Troubleshooting Guide

Symptom	Solution
<b>No power.</b>	<ul style="list-style-type: none"> <li>Check the batteries are installed properly.</li> <li>The batteries may be weak.</li> <li>Replace the old batteries with new ones.</li> </ul>
<b>Reception is weak.</b>	<ul style="list-style-type: none"> <li>Press the ▲(UP) button to increase the receiver volume level.</li> <li>The receiving signal may be weak and/or out of range.</li> </ul>
<b>Cannot change channels.</b>	<ul style="list-style-type: none"> <li>Key lock mode must be deactivated if the Key lock icon (🔒) is displayed on the LCD Screen.</li> <li>To change channels, press the MENU button then press the ▲(UP) or ▼(DOWN) buttons to change the current channel.</li> <li>Batteries may be weak.</li> </ul>
<b>Range is limited.</b>	<ul style="list-style-type: none"> <li>Batteries may be weak.</li> <li>Replace with new batteries if the battery charge level indicator is low.</li> <li>The maximum range will vary depending on terrain and environment.</li> <li>Open fields provide the maximum range, while steel/concrete structures, heavy foliage, and use in buildings and in vehicles may limit the range significantly.</li> <li>Wearing the radio close to the body, such as in a pocket or on a belt, will decrease range; change the location of the radio.</li> </ul>
<b>Sound distortion problems.</b>	<ul style="list-style-type: none"> <li>If you are transmitting, speak in a normal tone of voice, 5 cm away from the Mic (microphone).</li> <li>If you are receiving, lower the volume to a comfortable level.</li> <li>Radios too close. Radios must be at least 1.5 meters apart; increase your distance.</li> <li>Radios too far apart. Obstacles interfere with transmission. Talk range is up to 3 Km (2 miles) in clear unobstructed conditions.</li> </ul>

### Declaration of Conformity

The Binatone marina 300 complies with the essential requirements

- R&TTE Directive, 1999/5/EC
- Low Voltage Directive 73/23/EEC

And conforms to the following relevant standards:

- ETSI EN 300 296-2: 2001
- EN 301489: 2002
- EN 60065: 1998



Waste electrical products must not be disposed of with household waste. This equipment should be taken to your local recycling centre for safe treatment.

Binatone Telecom plc operates a policy of continuous product improvement, and so reserves the right to make changes to the product and functions without prior notice.



**Binatone Help Line - 0845 345 9677**