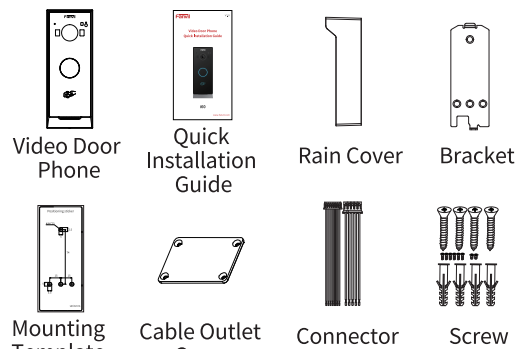


Video Door Phone Quick Installation Guide


i60

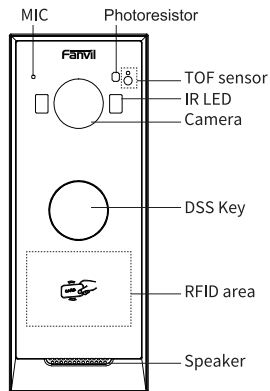
1) Package Contents



2) Physical Specification

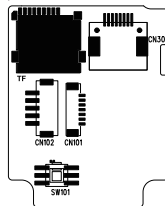
Model	Device Size
i60	50×130×30mm (L*H*W)

1) Panel



2) Interface Description

Open the rear case of the device, there is a row of terminal blocks for connecting the power supply, electric lock control, etc. The connection is as follows:



Terminal Block	Name	Wire Color	Description	
CN101	DOORA	Red	Two sets of short-circuit input detection interfaces: for connecting switches, infrared probes, door magnets, vibration sensors and other input devices	
	GND	Black		
	DOORB	Brown		
	GND	Black	Wiegand interface	
	WG_D1	Yellow		
	WG_D0	White		
CN102	GND	Black	Power interface: 12V/1A input up positive, down grounded	
	12V+	Red		
	GND	Black		
	NC	Yellow		Short-circuit output control interface: used to control electric locks, alarms, etc.
	COM	Green		
NO	White			
CN301	Ethernet	/	Ethernet interface: standard RJ45 interface, 10/100M adaptive, it is recommended to use Cat5, Cat5e or Cat6	
SW101	Tamper Switch	/	Normally in the pressed state	
TF	TF Card Slot	/	Insert TF card here	

3) Wiring Instructions

NO: Normally Open Contact;
COM: Common Contact;
NC: Normally Close Contact.

Driving Mode	Electric-lock Mode		Connections
	Passive	Active	
√	√	Electrify when open	
√		Electrify when open	
√	√	Electrify when open	

Installation Instructions

1) Notice

- Do not install the device in places with condensation, high temperature, grease, or dust.
- Install the unit at a suitable visual height, with a recommended height of 120~140cm. If it is installed indoors, please maintain a distance of at least 2 meters from light sources and at least 3 meters from doors and windows to avoid direct sunlight.
- Avoid violent vibration, collision and impact, which may cause damage to the internal precision components and the shell.

2) Installation Diagram

Step 1: Installation preparation

A. Check the following contents:

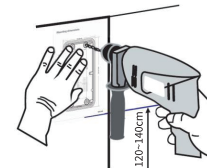
- KA4*25 screw x4
- φ6*30mm screw anchor x4
- KM3*5 screw x2
- KM2*6 screw x6

B. Recommended Tools

You need the following tools to perform the removal and installation procedures:

- Ph2 or Ph3 and Ph5 Phillips screwdriver, hammer, RJ45 crimping pliers
- Wall drilling impact drill, 8mm impact drill x1

Step 2: Drill and Install wall bracket



- Use the mounting template to mark the exact position of the mounting holes on the wall.
- Before marking the holes, use a spirit level or other method to verify that the template is horizontally aligned, this will ensure that the intercom unit will be mounted straight.
- Choose the appropriate drill bit and drill the holes at the marked positions, ensure the depth of the holes are 2CM.
- Insert the wall anchors into the holes, gently tap the anchors into the holes with hammer until they are flush with the wall surface.
- Position the mounting bracket over the drilled holes, ensure the holes on the bracket align with the anchors.
- Use the screws to attach the bracket to the wall, tighten the screws with a screwdriver or drill with a screwdriver bit.

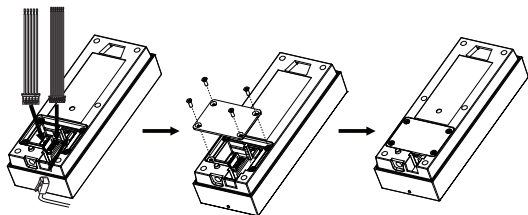
NOTE: This equipment has been tested and found to comply with the limits for a Class B digital device, pursuant to part 15 of the FCC Rules. These limits are designed to provide reasonable protection against harmful interference in a residential installation. This equipment generates, uses and can radiate radio frequency energy and, if not installed and used in accordance with the instructions, may cause harmful interference to radio communications. However, there is no guarantee that interference will not occur in a particular installation. If this equipment does cause harmful interference to radio or television reception, which can be determined by turning the equipment off and on, the user is encouraged to try to correct the interference by one or more of the following measures:

- Reorient or relocate the receiving antenna.
- Increase the separation between the equipment and receiver.
- Connect the equipment into an outlet on a circuit different from that to which the receiver is connected.
- Consult the dealer or an experienced radio/TV technician for help. Changes or modifications not expressly approved by the party responsible for compliance could void the user's authority to operate the equipment.

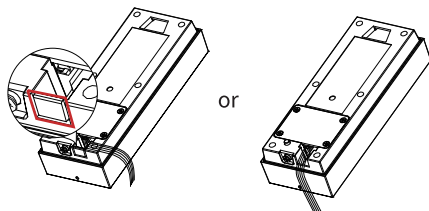
This device complies with Part 15 of the FCC Rules. Operation is subject to the following two conditions:
 (1) this device may not cause harmful interference, and (2) this device must accept any interference received, including interference that may cause undesired operation.

Step 3: Connect wiring

A. Connect the CAT5e cable, Power cable, Maglock cables into the slot, tighten the waterproof cover with the KM2*6 screws.

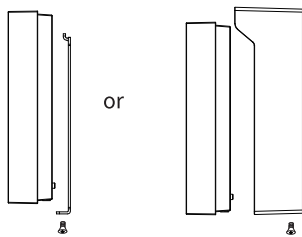


B. If the cable outlet is too small, use diagonal pliers to cut off the cable outlet.



C. Place the unit from bottom to top, position the unit on the mounting bracket, use the screw to tight the unit on the bottom of bracket.

Rain cover installation Rain cover installation

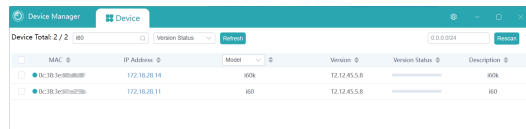


4 Searching Door Phone

Here are two methods as shown below to search the device.

Method 1:

Open the IP scanning tool (Device Manager), click on the scan button to obtain the IP address of door phone devices within the local network.



Method 2:

To switch the system to network mode and have it announce the IP address by voice, follow these steps:
 A. Press and hold the DSS key for 3 seconds (after 30 seconds of powering on):

- Wait for 30 seconds after powering on the device.
- Press and hold the DSS key for 3 seconds.
- Ensure you maintain a consistent press for the full duration.
- After the speaker emits a prompt tone, quickly press the DSS key once. The prompt tone will stop, and the device will automatically announce its IP address by voice.

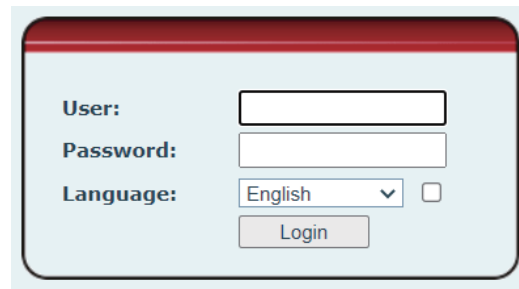
B. Procedure to switch to IP address acquisition mode:

- Press and hold the DSS key for 3 seconds until the speaker emits a rapid beep.
- Quickly press the DSS key three times within 5 seconds.
- After successfully switching to network mode, the system will automatically announce the IP address by voice.

5 IP Door Phone Setting

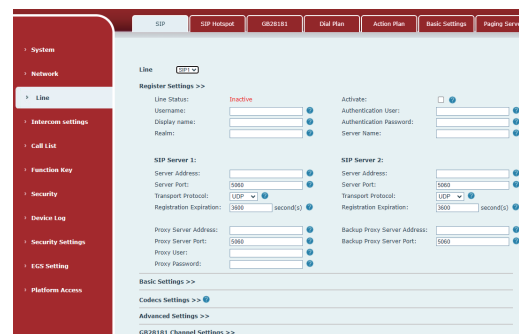
Step 1: Log in the door phone

Input IP address (e.g. http://192.168.1.128) into address bar of PC's web browser. The default user name and password are both admin.



Step 2: Add the SIP account

Set SIP server address, port, user name, password and SIP user with assigned SIP account parameters. Select "Activate", and then click Apply to save this setting.



Step 3: Door Phone Setting

On the web page "EGS Setting", you can configure parameters for access control, manage personnel, and manage cards.

