



The small camera that
makes a big difference

Series Comparison

To give our customers a choice of user cases we have designed three series of camera with multiple models within each

			
	COLLA	D-series	K-series
Weight	90g	155g-200g	220g
Battery (hours)	1.5	12	12
Protection	IP54	IP65	IP67
Front Facing Screen	✓	✓	✓
Encryption	✓	✓	✓
Playback		✓	✓
Pre-Record		✓	✓
Live streaming		✓	✓
Articulating camera head		✓	✓
Touch Screen			✓
AI Enabled			✓

Why Calla Body Cameras

Body cameras have been proven to deter aggression and provide an independent account of incidents in law enforcement.

Body cameras can:

- ✓ De-escalate situations
- ✓ Reduce disruption
- ✓ Record an independent account of what happened

It's not just law enforcement who face situations where body cameras can make a difference. All public facing staff are regularly in situations where they face disruption or aggression. We wanted to create a body camera that would be suitable for this environment but afford the same features of security and ease of use.

Calla is a small, secure body camera with a front facing screen connected to a Digital Evidence Management Software (DEMS 360) hosted On-Prem or in the Cloud.

How Calla Can Help

When people see themselves being recorded on Calla's front facing screen, they tend to calm themselves down.

But if a situation does escalate, the user has the confidence that there is a full recording of the incident showing an independent account of events. The camera therefore isn't recording all the time, only when the user deems it necessary - in line with agreed policies.

Videos recorded are stored securely on DEMS 360 and can only be accessed by authorised users.





How It Works

One

Staff member comes across a situation that warrants turning the camera on.



Two

The staff member turns the camera on and makes it clear he is recording.

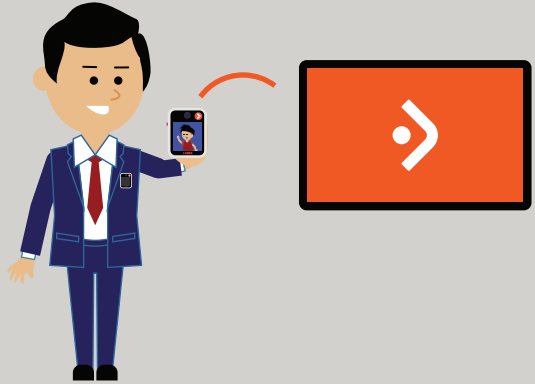
Three

The staff member continues to deal with the situation as normal until it is resolved.



Four

Staff member securely uploads the footage to the DEMS 360 platform.

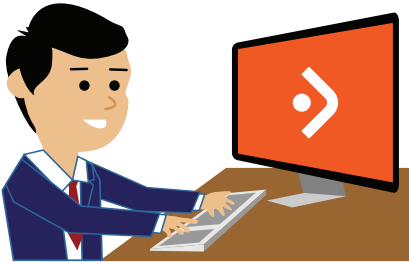


Five

Non-Evidential video is deleted after your set retention period.

Evidential video can be set to longer retention periods.

Important video can be restricted to Authorised staff.



Six

Video helps resolve situations quicker getting staff members back to doing what they do best.



Calla Camera



Front facing screen

Studies show that when people can see they are being recorded it can help calm them down and avoid conflict, and that's just what Calla's screen does.



Encryption

Calla cameras are AES 256-bit encrypted and video footage can only be accessed by authorised users logged into DEMS 360.





One touch record

Having a single, quick and simple action to turn the camera on makes it easy for users to start recording. Our intuitive red sliding switch is a positive action that confirms activation and is easy to operate for staff on the go.



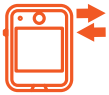
Flexible mounting

Calla is lightweight and can be attached to any clothing using a variety of mounting options - lanyard, crocodile clip, Klick fast or a magnetic mount.

DEMS360

DEMS 360 is our most advanced digital evidence management solution yet that allows you to manage all media types.

Available on cloud or on premises.



Automatic File Transfer

When a Body camera is connected to the DEMS 360 Uploader via a Micro USB or Docking Station, the video files are automatically uploaded, and body camera is automatically receive updates/ settings from your DEMS 360 instance.



Web Browser Access

Review video, add notes and categorise evidence in the field.



All your evidence

You can now securely store all your digital evidence, across media types, in one place – be it body camera footage, audio, documents, or pictures; ensuring efficient evidence management.



Case support

Create case support folders to group related files together, such as video footage from a body camera coupled with related documents and pictures.

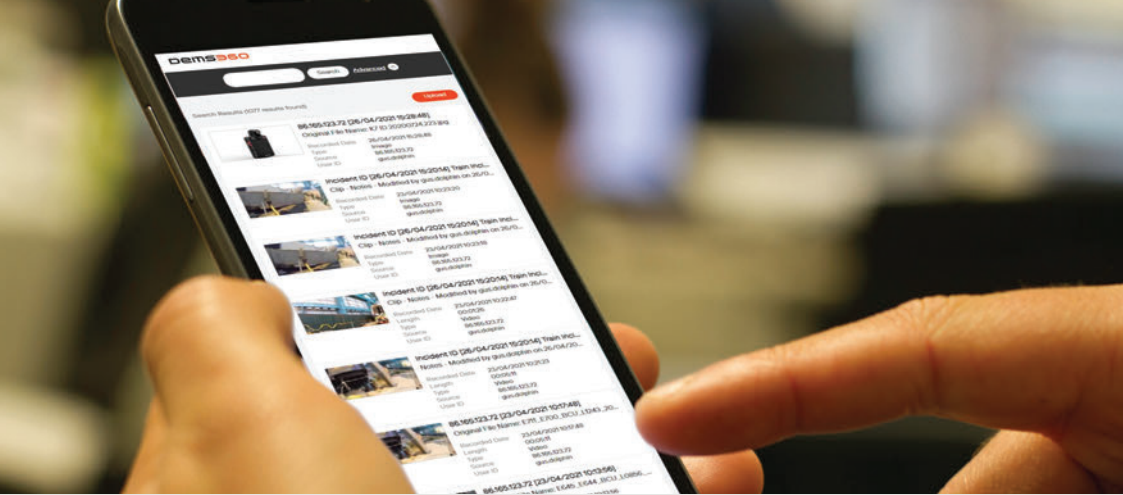
Redaction

The automated redaction tool recognises and selects faces from the body camera footage, enabling staff to efficiently obscure faces as needed. It can also be used to redact audio, license plates or any other private information with a few clicks.



Security and privacy built in

From the camera to the courtroom, DEMS 360 keeps all your evidence totally secure through industry leading encryption, access restrictions and storage infrastructure.



Hosted anywhere. Access everywhere.

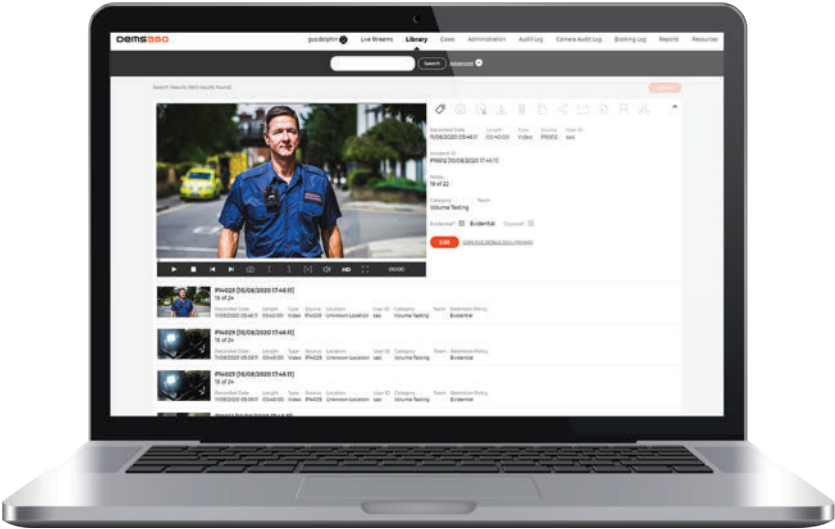
You can choose to have your DEMS 360 instance hosted on premises or on our secure cloud server.

When stored on the cloud, DEMS 360 is available on the web, so you can securely log in on any device with internet, which means all your digital evidence is accessible wherever you need it to be - at the station, in the field or in court.

Because it's stored on data centers that meet or exceed Tier 4 requirements, you can be sure that your evidence is hosted on world class infrastructure.



Simply manage all your digital evidence. Anywhere.





Technical Specifications

Dimensions	Height: 57mm Width: 43mm Depth: 17mm
Weight	90g
Screen	1.5"
On Screen Display:	Resolution, Frame Rate, Date, Time, Memory Available (GB), Ongoing Recording Length, Battery Level (%), Recording Indicator, Evidential Recording Indicator.
Battery	90 minutes
Memory	2.5 hours (8GB)
Video	720p
Frame Rate:	30 fps
Encoding:	.MP4
Audio Encoding:	Advanced Audio Coding (AAC)
Audio Alarms:	Power On/Off, Record Start/Stop, Low Battery and Low Memory
Encryption:	AES 256-bit
Operating Temperature:	5°C to 35°C
Protection:	IP54
Certification:	FCC CE

REVEAL



+44 (0) 203 890 2000
revealmedia.co.uk